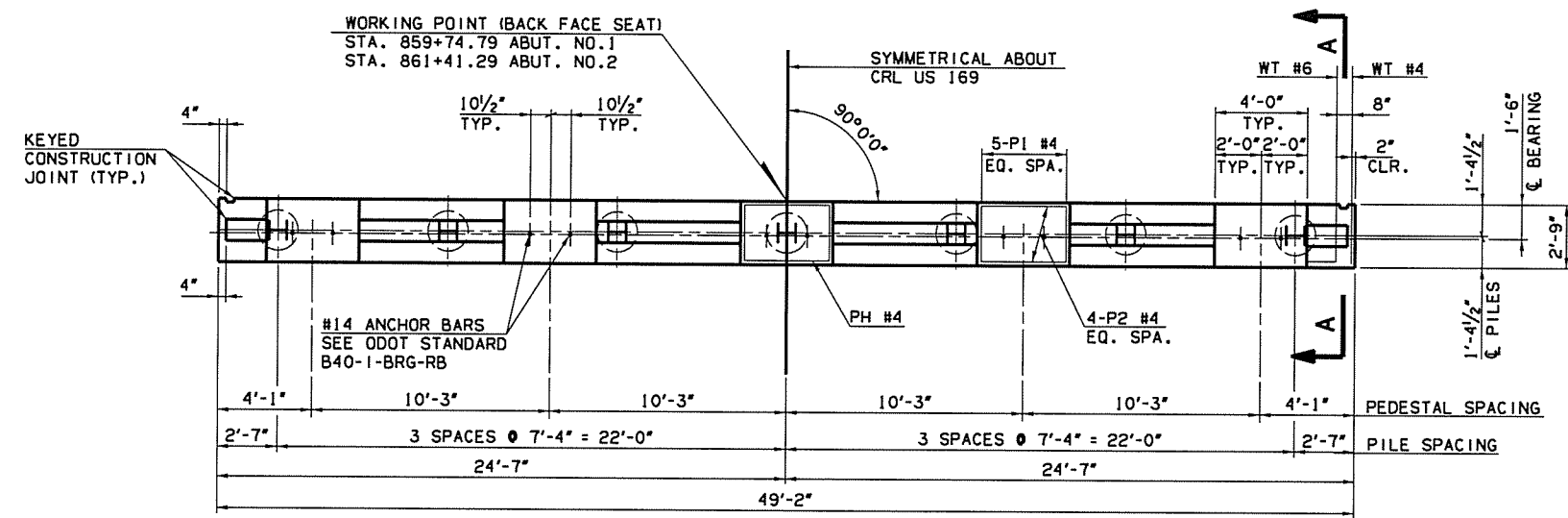
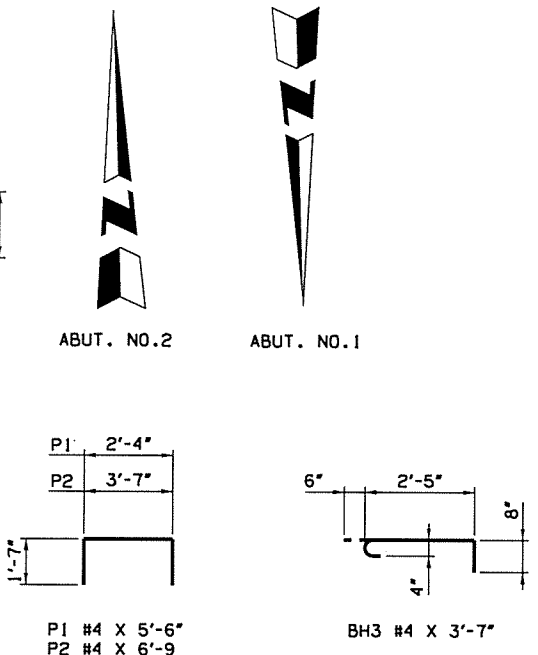


COORD. DIVISION	STATE	J/P PROJ NO.	FISCAL YEAR	SHEET NO.	TOTAL SHEETS
8	OKLA	27092(04)		55	143

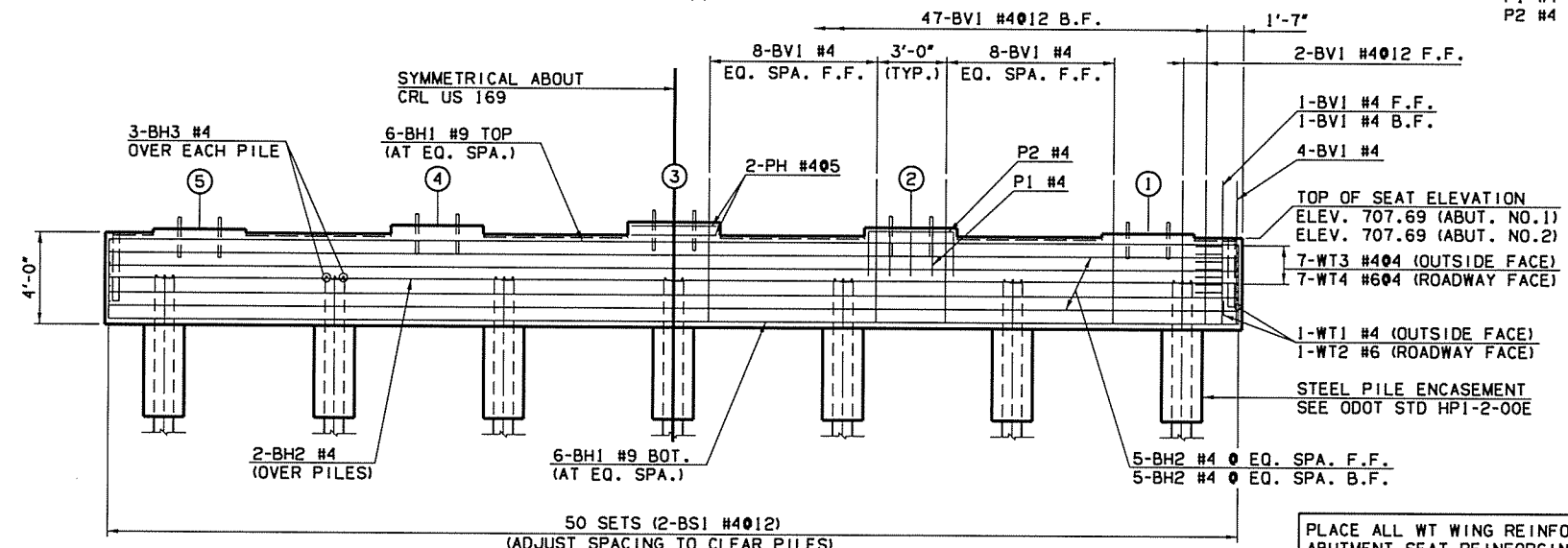


ABUTMENT NO. 2 LOOKING UP STATION  
ABUTMENT NO. 1 LOOKING DOWN STATION OPP. HAND  
**PLAN - ABUTMENT NO.1 AND NO.2**  
SCALE: 1/4" = 1'-0"



ABUTMENT BAR LIST (ONE ABUTMENT SHOWN, TWO REQUIRED)					
EPOXY COATED REINFORCING					
MARK	SIZE	QTY.	FORM	LENGTH	REMARKS
BV1	#4	95	STR	6'-3"	
BH1	#9	12	STR	48'-10"	
BH2	#4	12	STR	48'-10"	
BH3	#4	21	BNT	3'-7"	
BS1	#4	100	BNT	11'-5"	
WT1	#4	2	BNT	5'-2"	
WT2	#6	2	BNT	7'-5"	
WT3	#4	14	STR	6'-10" (AVG.)	4'-0" TO 9'-8" SEE NOTE 1
WT4	#6	14	BNT	7'-10" (AVG.)	5'-0" TO 10'-8" SEE NOTE 1
P1	#4	15	BNT	5'-6"	SEE NOTE 2
P2	#4	12	BNT	6'-9"	SEE NOTE 2
PH	#4	2	BNT	12'-11"	

- NOTES:**
- (2) SETS OF 7
  - OMIT REINFORCING IN 2" PEDESTALS.

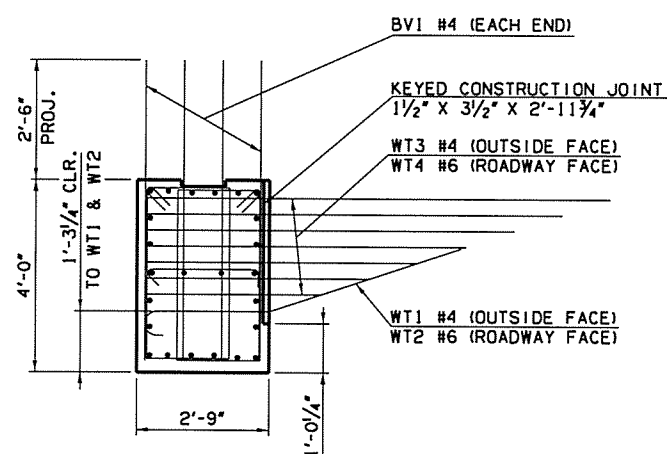


ABUTMENT NO. 2 LOOKING UP STATION  
ABUTMENT NO. 1 LOOKING DOWN STATION OPP. HAND  
**ELEVATION**  
SCALE: 1/4" = 1'-0"

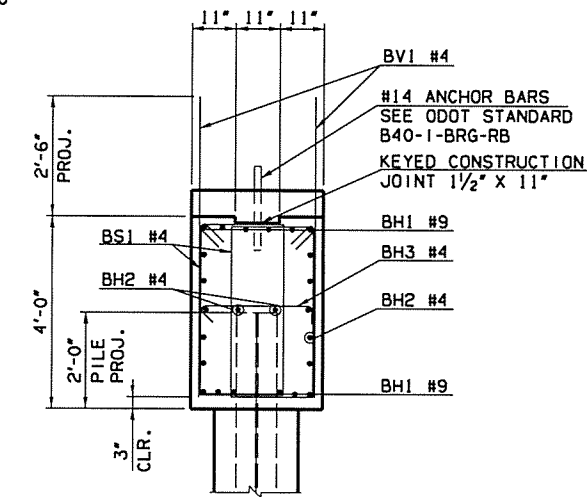
PLACE ALL WT WING REINFORCING TIED TO ABUTMENT SEAT REINFORCING BEFORE PLACING ABUTMENT SEAT CONCRETE. DO NOT PLACE ABUTMENT WING CONCRETE UNTIL CONCRETE FOR THE ABUTMENT DIAPHRAGM AND DECK SLAB HAVE ATTAINED A STRENGTH OF 3000 P.S.I.

PEDESTAL	ELEVATIONS	
	ABUT. NO.1	ABUT. NO.2
1	707.86	707.86
2	708.07	708.07
3	708.27	708.27
4	708.07	708.07
5	707.86	707.86

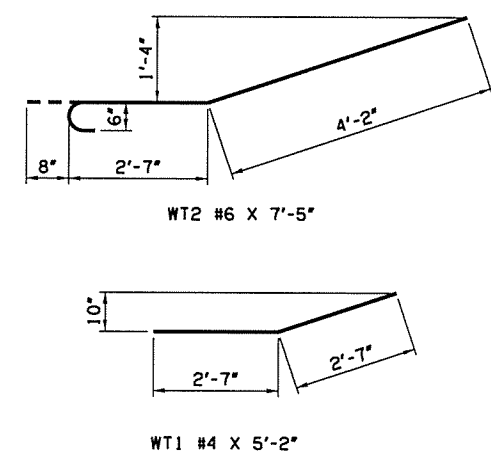
ABUTMENT QUANTITIES				
ITEM	UNIT	ABUT. NO.1	ABUT. NO. 2	TOTAL
SUBSTRUCTURE EXCAVATION COMMON	CY	45	45	90
CLSM BACKFILL	CY	64.0	64.0	128.0
CLASS A CONCRETE	CY	25.7	25.7	51.4
EPOXY COATED REINFORCING STEEL	LB	4680	4680	9360
PILES, FURNISHED (HP10X42)	LF	182	182	364
PILES, DRIVEN (HP10X42)	LF	182	182	364
METAL PILE SHOES	EA	7	7	14
WATER REPELLENT (VISUALLY INSPECTED)	SY	25	25	50
TYPE 1-A PLAIN RIPRAP	TON	410	370	780
TYPE 1-A FILTER BLANKET	TON	60	55	115
FILTER FABRIC (RIPRAP)	SY	245	215	460
6" PERFORATED PIPE UNDERDRAIN ROUND	LF	50	50	100
6" NON-PERF. PIPE UNDERDRAIN RND.	LF	40	40	80



**SECTION A-A**  
SCALE: 1/2" = 1'-0"



**TYPICAL SECTION THRU SEAT**  
SCALE: 1/2" = 1'-0"



F.F. = FRONT FACE  
B.F. = BACK FACE

Design	STF	6/16	US 169 OVER OPOSSUM CREEK	NOWATA COUNTY
Drawn	RAH	6/16	BRIDGE A	
Checked	DAS	6/16	<b>ABUTMENT DETAILS</b>	
Approved	SAK	6/16	<b>(SHEET 1 OF 4)</b>	
Squad	BENHAM		Job Piece No. 27092(04)	Sheet No. 55