

DDOT DIVISION	STATE	JOB PIECE No.	FISCAL YEAR	SHEET No.	TOTAL SHEETS
8	OKLA	27092(04)		48	143

NORTHWEST CORNER OF SECTION 36, T-29-N, R-16-E, I.M. FOUND AND ACCEPTED A 1/2" IRON ROD AND 2 REFERENCES AS LISTED IN CORNER RECORD FILED BY GUY R. BUCKLAND, LS 1323 DATED AUGUST 1997. SET ONE REFERENCE.

NORTH QUARTER CORNER OF SECTION 36, T-29-N, R-16-E, I.M. FOUND 1" IRON PIPE AND THREE REFERENCES LISTED ON A CERTIFIED CORNER RECORD FILED ON MARCH 9, 2012.

NORTHEAST CORNER OF SECTION 36, T-29-N, R-16-E, I.M. FOUND AND ACCEPTED A 1/2" IRON ROD WITH CAP MARKED "CORNERSTONE SURVEYING, OK-CALS 3212" SET ON TOP OF ORIGINAL STONE AND THREE REFERENCES LISTED ON A CERTIFIED CORNER RECORD FILED BY CORNERSTONE SURVEYING OF KS & OK, LLC ON MARCH 28, 2001.

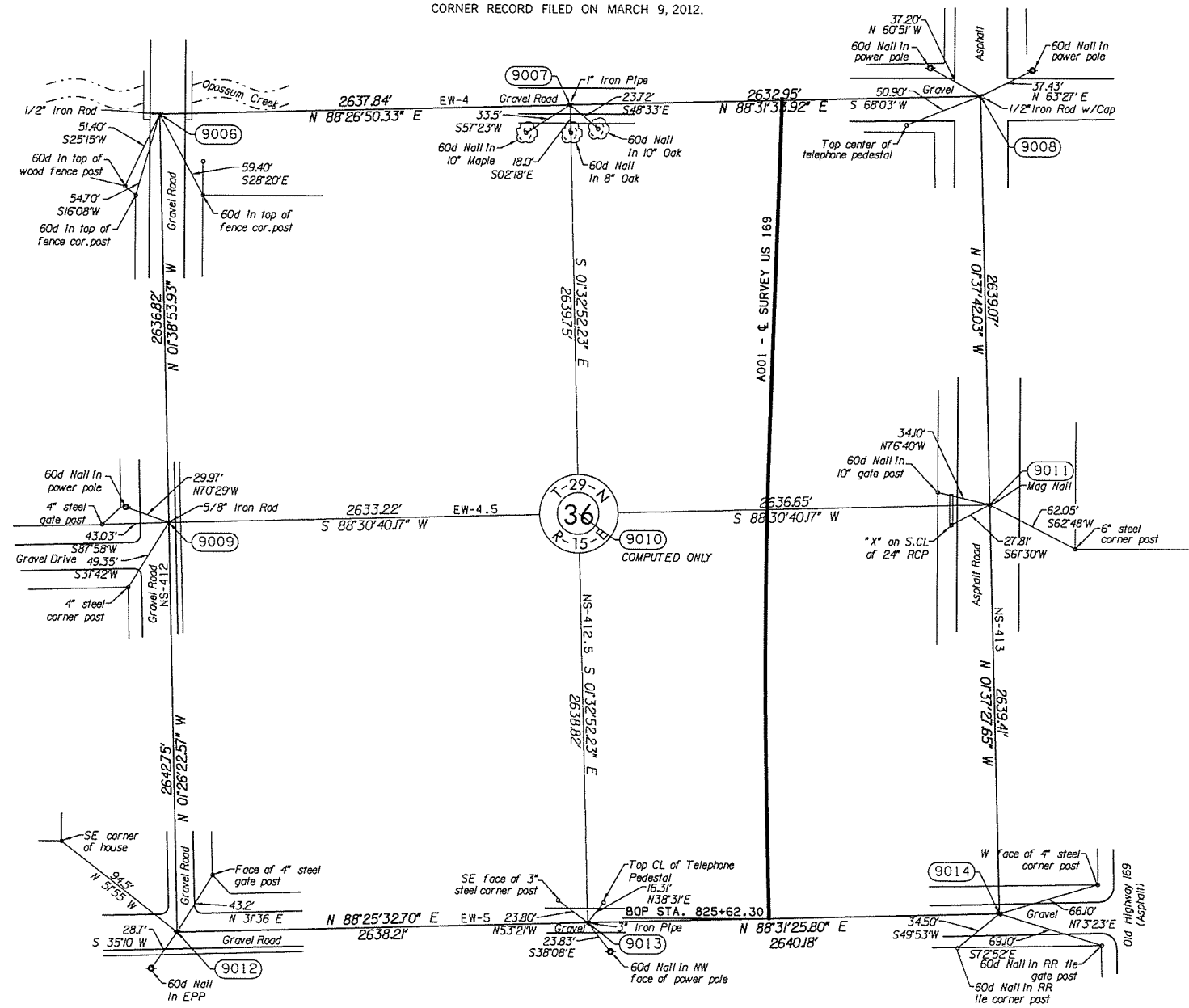
WEST QUARTER CORNER OF SECTION 36, T-29-N, R-16-E, I.M., FOUND AND ACCEPTED A 5/8" IRON ROD AND THREE REFERENCES LISTED ON A CERTIFIED CORNER RECORD FILED ON MARCH 9, 2012.

EAST QUARTER CORNER OF SECTION 36, T-29-N, R-15-E, I.M., FOUND AND ACCEPTED A MAG NAIL AND THREE REFERENCES LISTED ON A CERTIFIED CORNER RECORD FILED ON MARCH 9, 2012.

SOUTHWEST CORNER OF SECTION 36, T-29-N, R-16-E, I.M. FOUND AND ACCEPTED A 1/2" IRON PIN AND 1 REFERENCE LISTED ON A CERTIFIED CORNER RECORD FILED BY GUY R. BUCKLAND OF BUCKLAND SURVEYING COMPANY ON AUGUST 11, 1997. FOUND ONE REFERENCE SET BY PERSONS UNKNOWN. FOUND AND REJECTED A 5/8" IRON PIN SET BY PERSONS UNKNOWN. SET ONE REFERENCE TO FOUND MONUMENT.

SOUTH QUARTER CORNER OF SECTION 36, T-29-N, R-16-E, I.M. FOUND AND ACCEPTED A 3" IRON PIPE AND THREE REFERENCES LISTED ON A CERTIFIED CORNER RECORD FILED ON MARCH 9, 2012.

SOUTHEAST CORNER OF SECTION 36, T-29-N, R-15-E, I.M., FOUND AND ACCEPTED A 1/2" IRON PIN WITH YELLOW CAP AND THREE REFERENCES LISTED ON A CERTIFIED CORNER RECORD FILED ON MARCH 9, 2012.



SCALE: 1" = 500'

NOTE: REFERENCE'S SHOWN ARE NOT TO SCALE

PLS	DMM	OKLAHOMA DEPARTMENT OF TRANSPORTATION SURVEY DIVISION SURVEY DATA SHEET (10) SWO 4744(1) PROJECT NO. 27092(04) SHEET NO. 48
DRAWN	ARR	
CHECKED	VKM	
APPROVED	DMM	
CREW	GES, INC.	