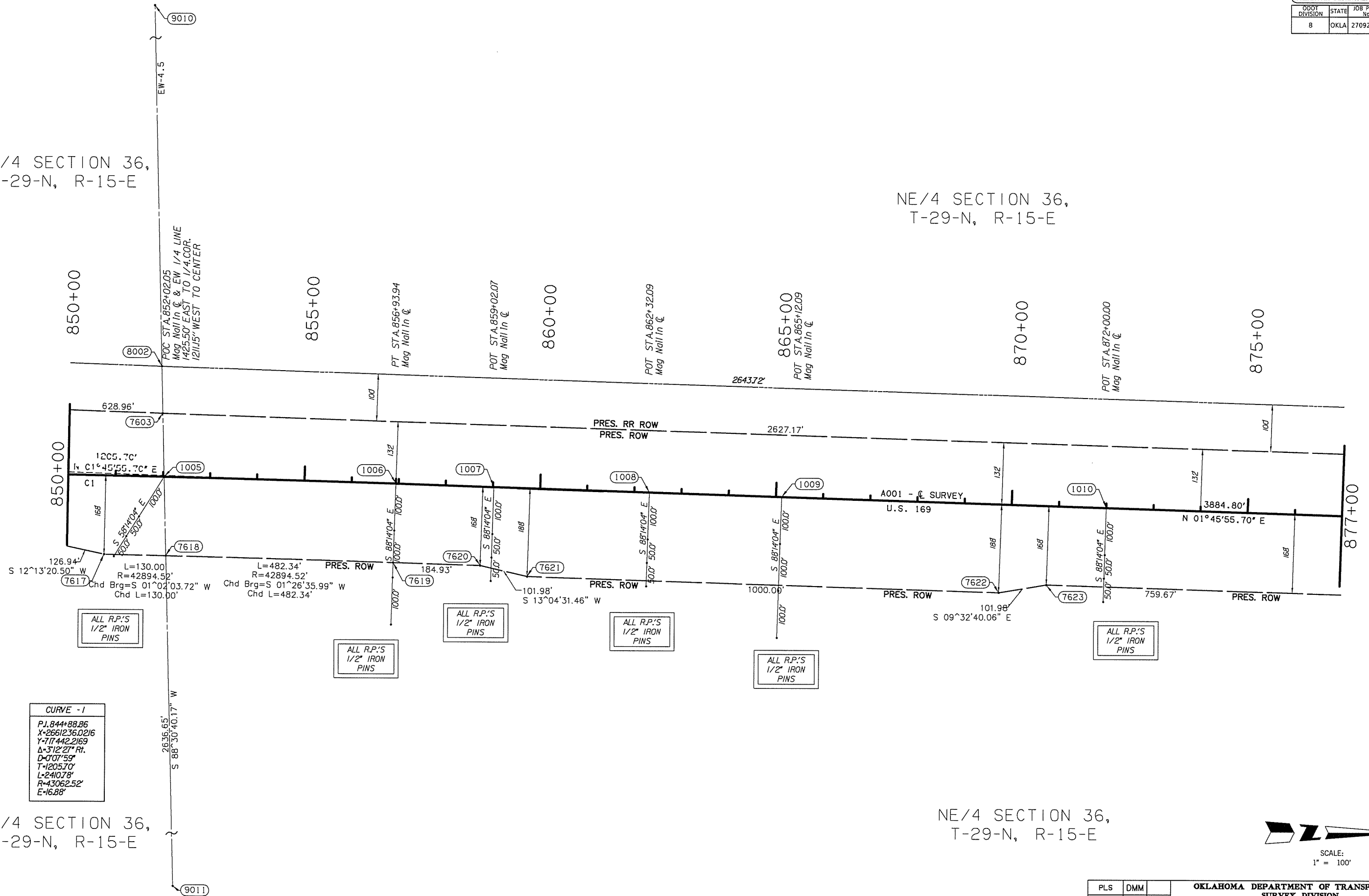


| OKLAHOMA DEPARTMENT OF TRANSPORTATION | | | | |
|---------------------------------------|-------|---------------|-------------|--------------|
| DDOT DIVISION | STATE | JOB PIECE No. | FISCAL YEAR | TOTAL SHEETS |
| B | OKLA | 27092(04) | 46 | 143 |

SE/4 SECTION 36,
T-29-N, R-15-E

NE/4 SECTION 36,
T-29-N, R-15-E



CURVE - 1

| |
|----------------|
| PJ.844+88.86 |
| X=2661236.0216 |
| Y=1174422169 |
| Δ=312°27' Rr. |
| D=0°07'59" |
| T=1205.70' |
| L=2410.78' |
| R=43062.52' |
| E=16.88' |

NE/4 SECTION 36,
T-29-N, R-15-E



SCALE:
1" = 100'

| | | |
|----------|-----------|--|
| PLS | DMM | OKLAHOMA DEPARTMENT OF TRANSPORTATION SURVEY DIVISION SURVEY DATA SHEET (8) SWO 4744(1) PROJECT NO. 27092(04) SHEET NO. 46 |
| DRAWN | ARR | |
| CHECKED | VKM | |
| APPROVED | DMM | |
| CREW | GES, INC. | |

7/12/2016 7:47:42 AM P:\NECN650-TUL\CV\255231000_000T_LUS169B-dg\20_DESSN\40_CAD_Opossum\DCN\CV27092(04)_C_Survey_Data_08.dgn