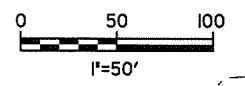


7/12/2016

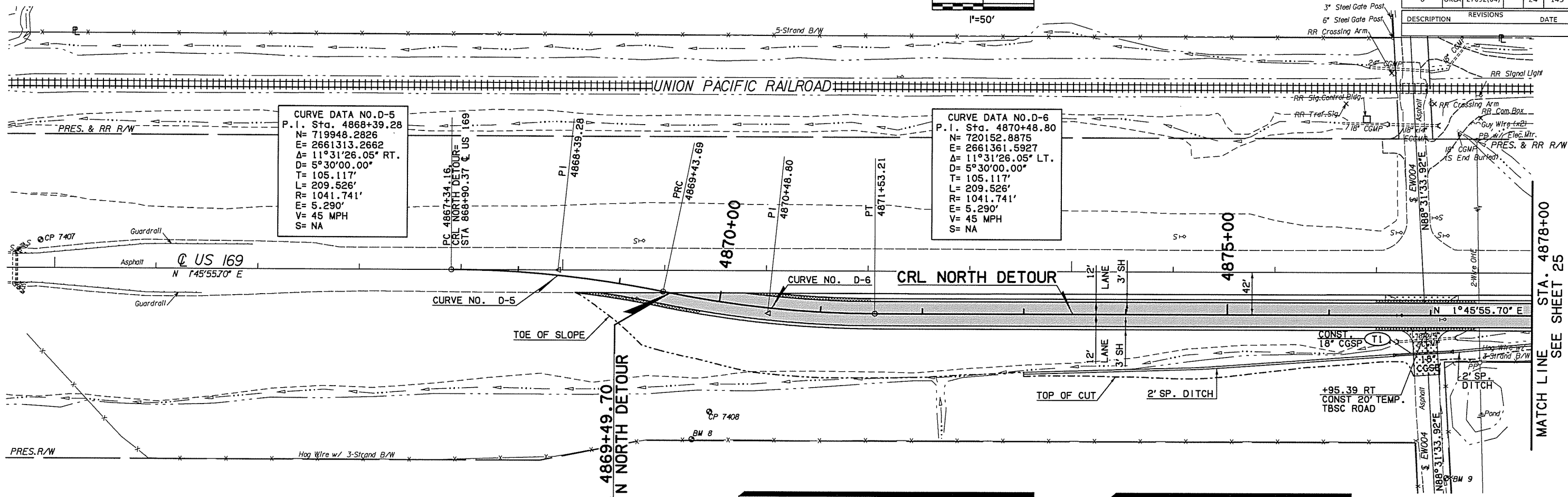
7:47:06 AM

P:\NECIV\650-TUL\CIV\255231000_00DT_USI69Br.dgn 20_DESGN\40_CAD_Opossum\02092(04)_C_PP_Detour_03.dgn

SEC. 36, T29N, R15E



OKLAHOMA DEPARTMENT OF TRANSPORTATION				
DDOT DIVISION	STATE	JOB PIECE No.	FISCAL YEAR	TOTAL SHEETS
8	OKLA	27092(04)	24	143

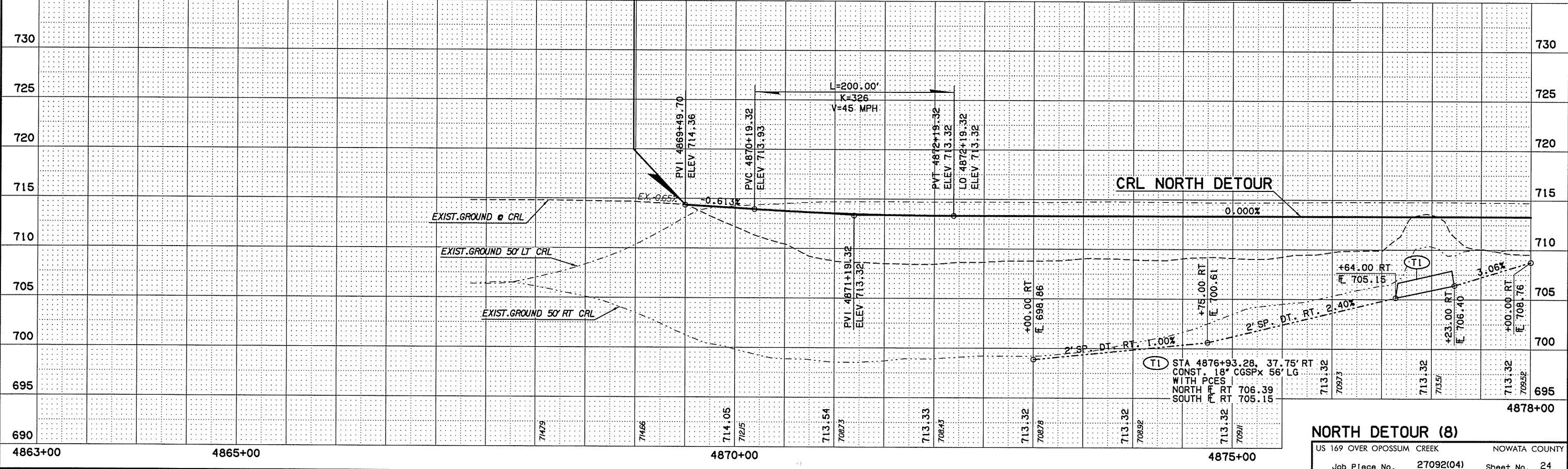


STA. 4869+49.70
BEGIN NORTH DETOUR

MATCH LINE STA. 4878+00
SEE SHEET 25

NOTE :
FOR R/W LINE STATION OFFSETS AND DIMENSIONS REFER TO THE US 169 PLAN AND PROFILE SHEETS

LEGEND		
	ASPH. RDWY.	
	ASPH. SHLDR.	
	TBSC ROAD	



NORTH DETOUR (8)
US 169 OVER OPOSSUM CREEK NOWATA COUNTY
Job Piece No. 27092(04) Sheet No. 24