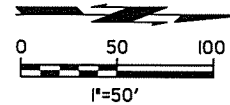


7/12/2016

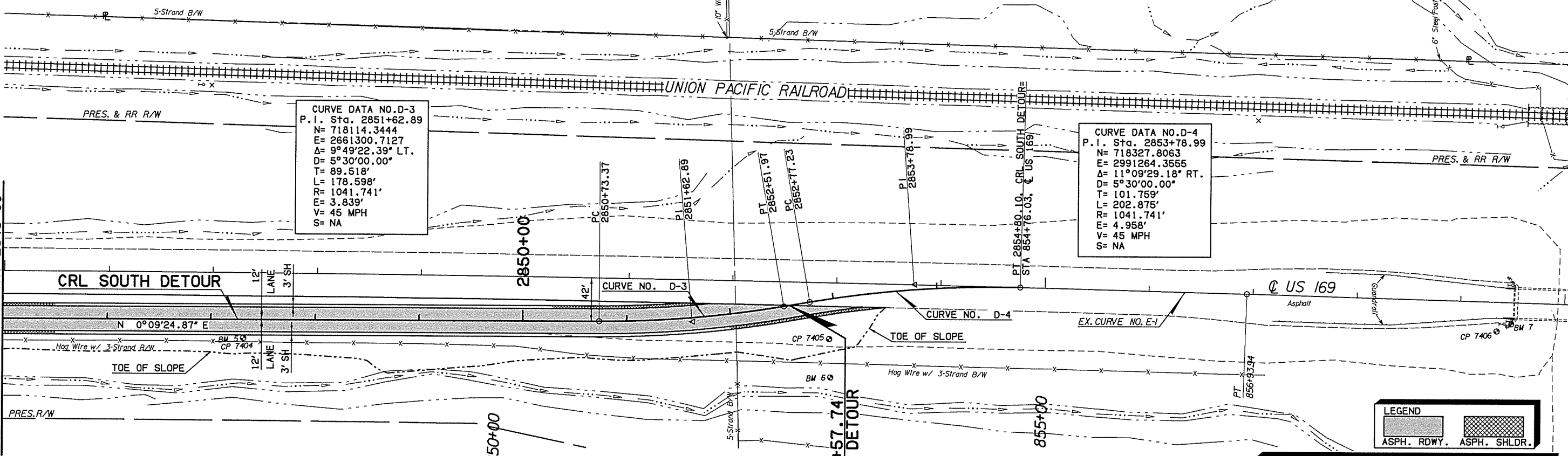
7:47:04 AM

P:\NEC\1650-TUL\CIV\255231000-0DOT_US169Rfdg\20_DESGN\40_CAD_Opossum\NGN\C\27092(04)_C_PP_Detour_02.dgn

SEC. 36, T29N, R15E



OKLAHOMA DEPARTMENT OF TRANSPORTATION					
DDOT DIVISION	STATE	JOB PIECE No.	FISCAL YEAR	SHEET No.	TOTAL SHEETS
8	OKLA	27092(04)		23	143
DESCRIPTION		REVISIONS	DATE		



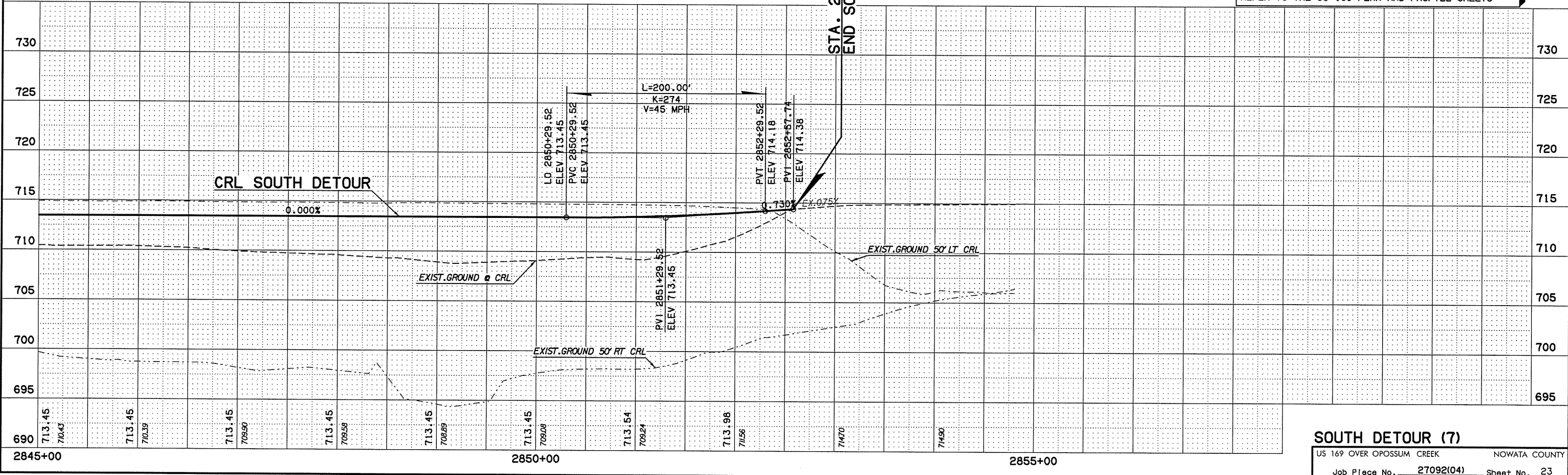
CURVE DATA NO. D-3
 P.I. Sta. 2851+62.89
 N= 718114.3444
 E= 2661300.7127
 Δ= 9°49'22.39" LT.
 D= 5°30'00.00"
 T= 89.518'
 L= 178.598'
 R= 1041.741'
 E= 3.839'
 V= 45 MPH
 S= NA

CURVE DATA NO. D-4
 P.I. Sta. 2853+78.99
 N= 718327.8063
 E= 2991264.3555
 Δ= 11°09'29.18" RT.
 D= 5°30'00.00"
 T= 101.759'
 L= 202.875'
 R= 1041.741'
 E= 4.958'
 V= 45 MPH
 S= NA

LEGEND

	ASPH. RDWY.
	ASPH. SHLDR.

NOTE :
 FOR R/W LINE STATION OFFSETS AND DIMENSIONS REFER TO THE US 169 PLAN AND PROFILE SHEETS



SOUTH DETOUR (7)
 US 169 OVER OPOSSUM CREEK NOWATA COUNTY
 Job Piece No. 27092(04) Sheet No. 23