

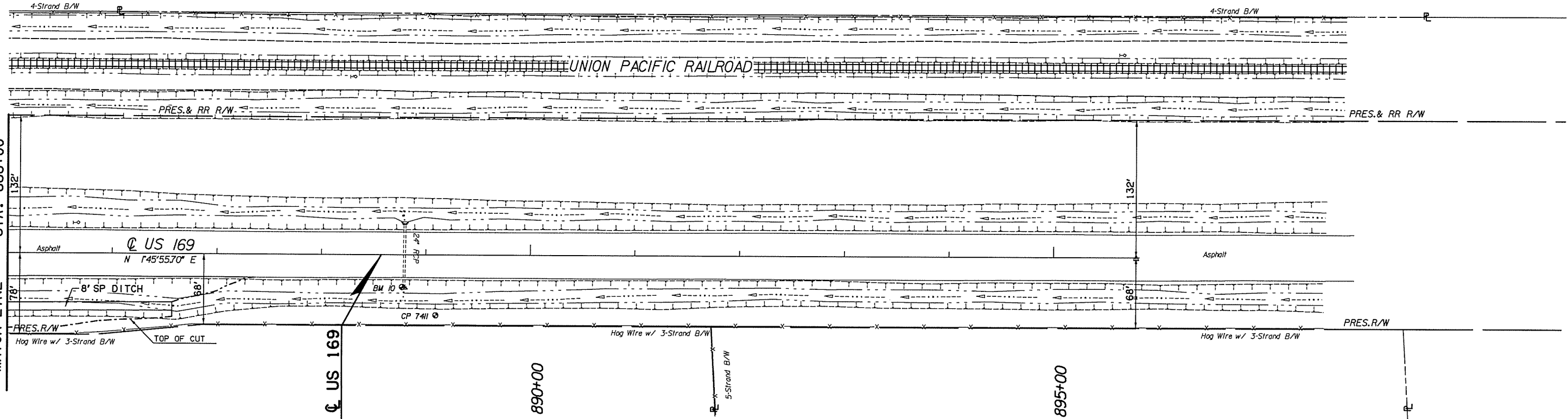
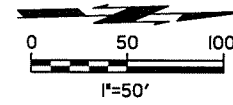
7/12/2016

7:47:00 AM

P:\ECON\650-TUL\CIV\255231000\_0001\_US169Br-dg-20\_DESGN-40\_CAD\_Opossum\DGN\C\270921041\_C\_Plan\_Profile\_05.dgn

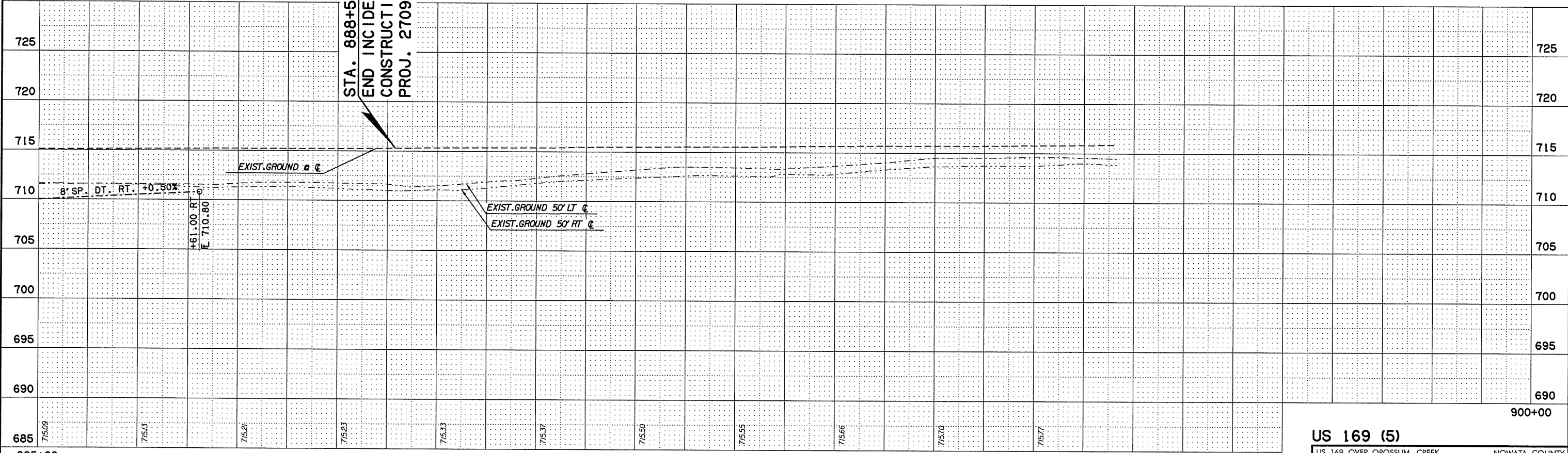
# SEC. 23, T29N, R15E

OKLAHOMA DEPARTMENT OF TRANSPORTATION					
ODOT DIVISION	STATE	JOB PIECE No.	FISCAL YEAR	SHEET No.	TOTAL SHEETS
8	OKLA	27092(04)		21	143



BM 10 - CHISELED BOX ON SE CORNER OF EAST HEADWALL  
 STA. 888+77.26, 31.07' RT.  
 ELEV. 713.24

STA. 888+57.05  $\phi$  US 169  
 END INCIDENTAL  
 CONSTRUCTION  
 PROJ. 27092(04)



**US 169 (5)**  
 US 169 OVER OPOSSUM CREEK NOWATA COUNTY  
 Job Piece No. 27092(04) Sheet No. 21