

7/12/2016

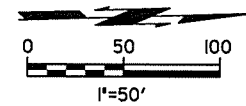
7:46:55 AM

P:\NEC\1650-TUL\CIW\255231000\_0DOT\_US169Brdg\20\_DESGN\40\_CAD\_Opossum\N.dgn\27092(04)\_C\_Plan\_Profile\_04.dgn

SEC. 36, T29N, R15E

SEC. 25, T29N, R15E

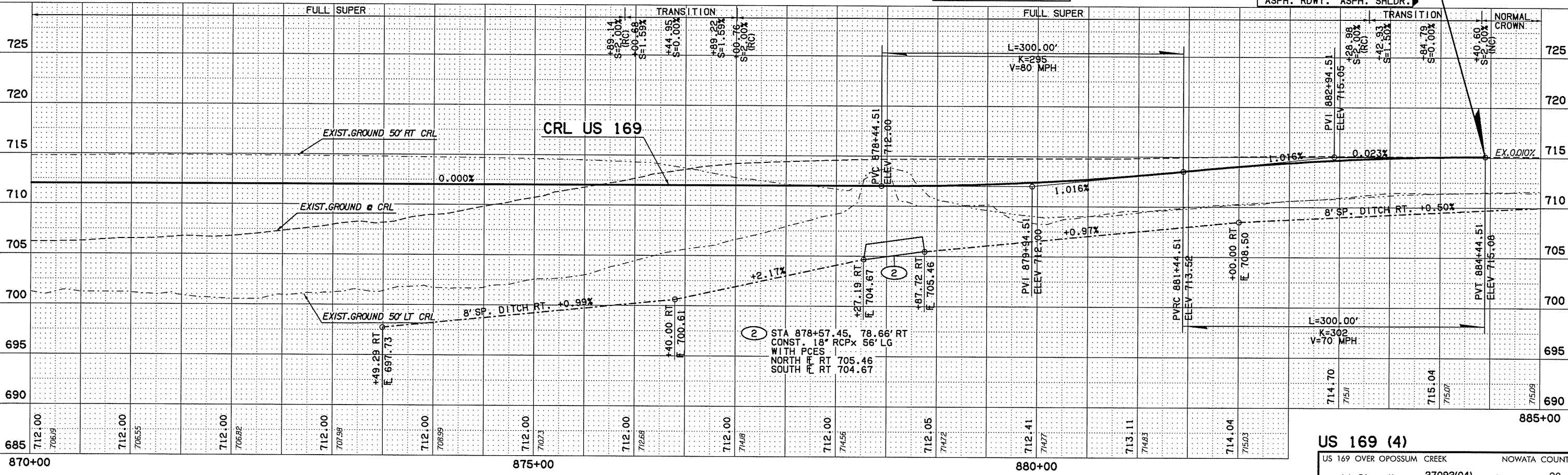
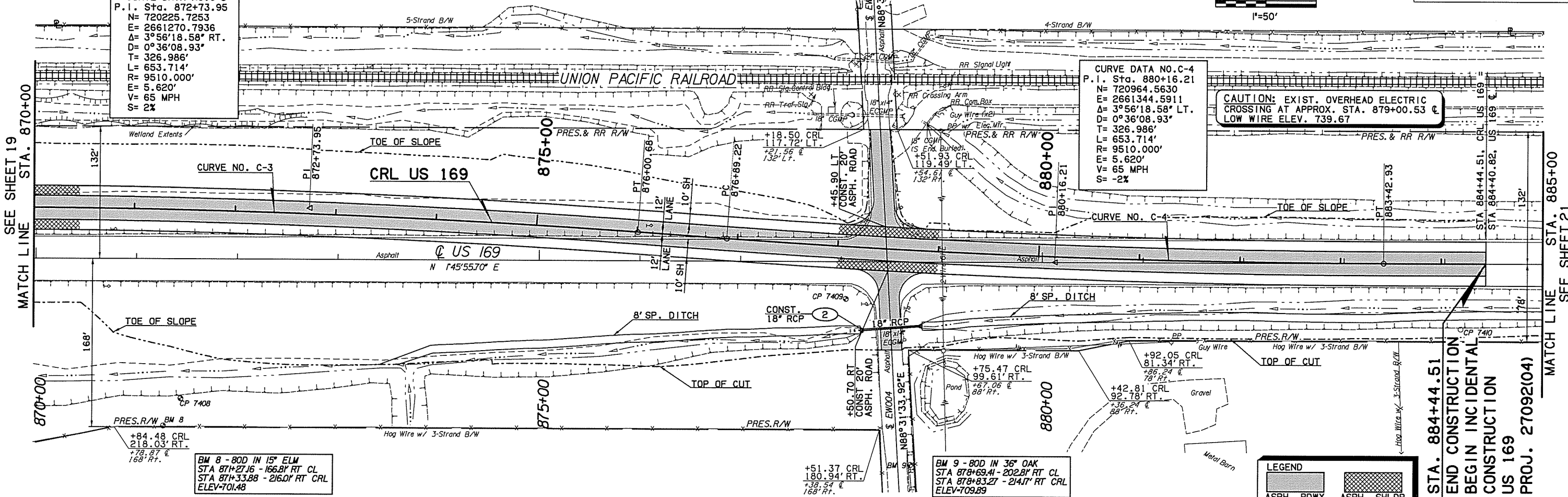
| OKLAHOMA DEPARTMENT OF TRANSPORTATION |       |               |             |              |
|---------------------------------------|-------|---------------|-------------|--------------|
| DDOT DIVISION                         | STATE | JOB PIECE No. | FISCAL YEAR | TOTAL SHEETS |
| 8                                     | OKLA  | 27092(04)     |             | 20           |
| DESCRIPTION                           |       |               | REVISIONS   | DATE         |
|                                       |       |               |             |              |



**CURVE DATA NO. C-3**  
 P.I. Sta. 872+73.95  
 N= 720225.7253  
 E= 2661270.7936  
 Δ= 3°56'18.58" RT.  
 D= 0°36'08.93"  
 T= 326.986'  
 L= 653.714'  
 R= 9510.000'  
 E= 5.620'  
 V= 65 MPH  
 S= -2%

**CURVE DATA NO. C-4**  
 P.I. Sta. 880+16.21  
 N= 720964.5630  
 E= 2661344.5911  
 Δ= 3°56'18.58" LT.  
 D= 0°36'08.93"  
 T= 326.986'  
 L= 653.714'  
 R= 9510.000'  
 E= 5.620'  
 V= 65 MPH  
 S= -2%

**CAUTION: EXIST. OVERHEAD ELECTRIC CROSSING AT APPROX. STA. 879+00.53 @ LOW WIRE ELEV. 739.67**



**STA. 884+44.51  
 END CONSTRUCTION  
 BEGIN INCIDENTAL  
 CONSTRUCTION  
 US 169  
 PROJ. 27092(04)**

**LEGEND**

|               |              |
|---------------|--------------|
| [Hatched Box] | ASPH. RDWY.  |
| [Dotted Box]  | ASPH. SHLDR. |

**US 169 (4)**  
 US 169 OVER OPOSSUM CREEK NOWATA COUNTY  
 Job Piece No. 27092(04) Sheet No. 20