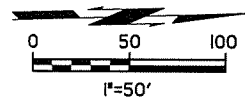


7/12/2016

7:46:51 AM

P:\ECON\650-TUL\CIV\255231000_00DOT_US169Br-dg\20_DESGN\40_CAD_Opossum\Dgn\C\27092(04)_C_Plan_Profile_02.dgn

SEC. 36, T29N, R15E



OKLAHOMA DEPARTMENT OF TRANSPORTATION					
DDOT DIVISION	STATE	JOB PIECE No.	FISCAL YEAR	SHEET No.	TOTAL SHEETS
8	OKLA	27092(04)		18	143
DESCRIPTION			REVISIONS	DATE	

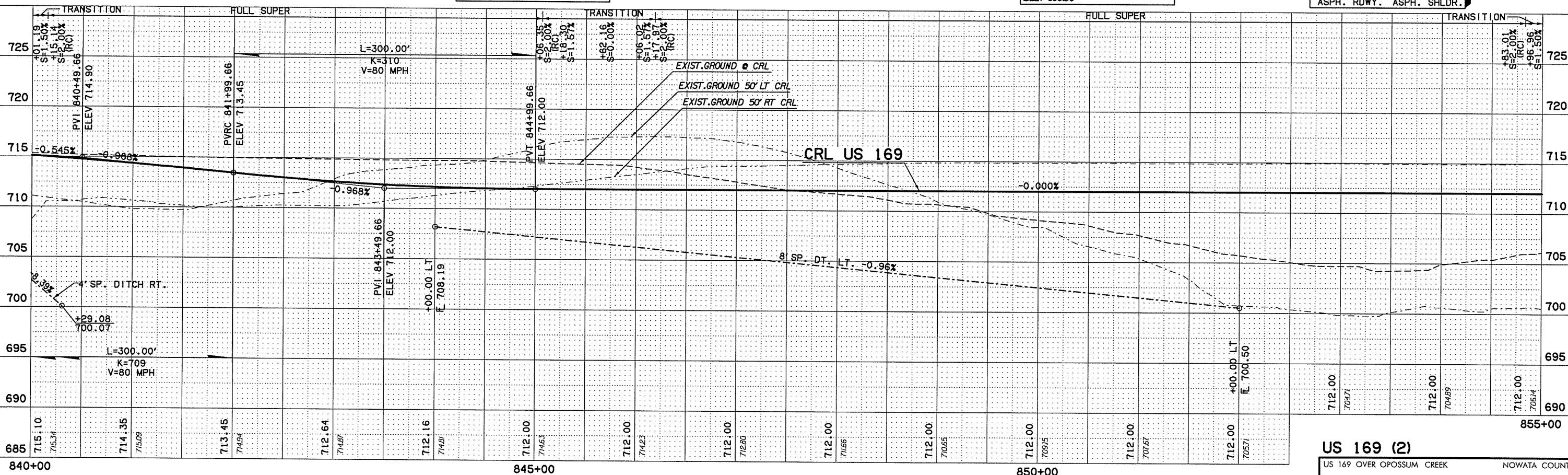
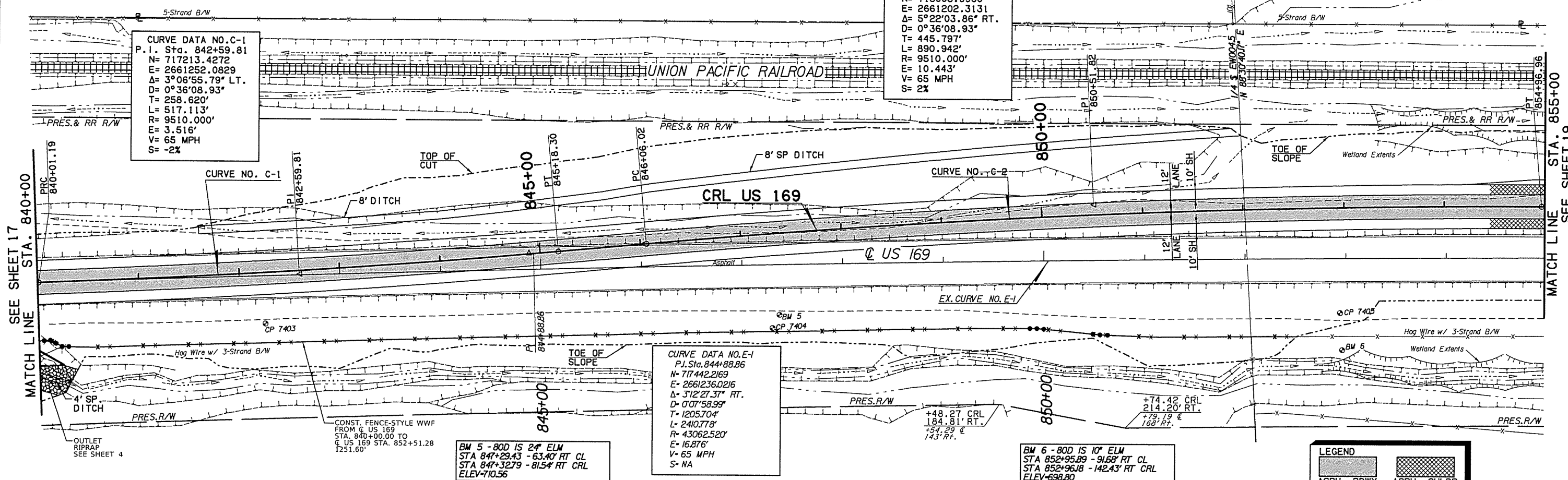
CURVE DATA NO. C-1
 P.I. Sta. 842+59.81
 N= 717213.4272
 E= 2661252.0829
 Δ= 3°06'55.79" LT.
 D= 0°36'08.93"
 T= 258.620'
 L= 517.113'
 R= 9510.000'
 E= 3.516'
 V= 65 MPH
 S= -2%

CURVE DATA NO. C-2
 P.I. Sta. 850+51.82
 N= 718003.9960
 E= 2661202.3131
 Δ= 5°22'03.86" RT.
 D= 0°36'08.93"
 T= 445.797'
 L= 890.942'
 R= 9510.000'
 E= 10.443'
 V= 65 MPH
 S= 2%

CURVE DATA NO. E-1
 P.I. Sta. 844+88.86
 N= 717442.2169
 E= 2661236.0216
 Δ= 3°12'27.37" RT.
 D= 0°07'58.99"
 T= 1205.704'
 L= 2410.778'
 R= 43062.520'
 E= 16.876'
 V= 65 MPH
 S= NA

BM 5 - 80D IS 2" ELM
 STA 847+29.43 - 63.40' RT CL
 STA 847+32.79 - 81.54' RT CRL
 ELEV=710.56

BM 6 - 80D IS 10" ELM
 STA 852+95.89 - 91.68' RT CL
 STA 852+96.18 - 142.43' RT CRL
 ELEV=698.80



LEGEND

ASPH. RDWY.

ASPH. SHLDR.