

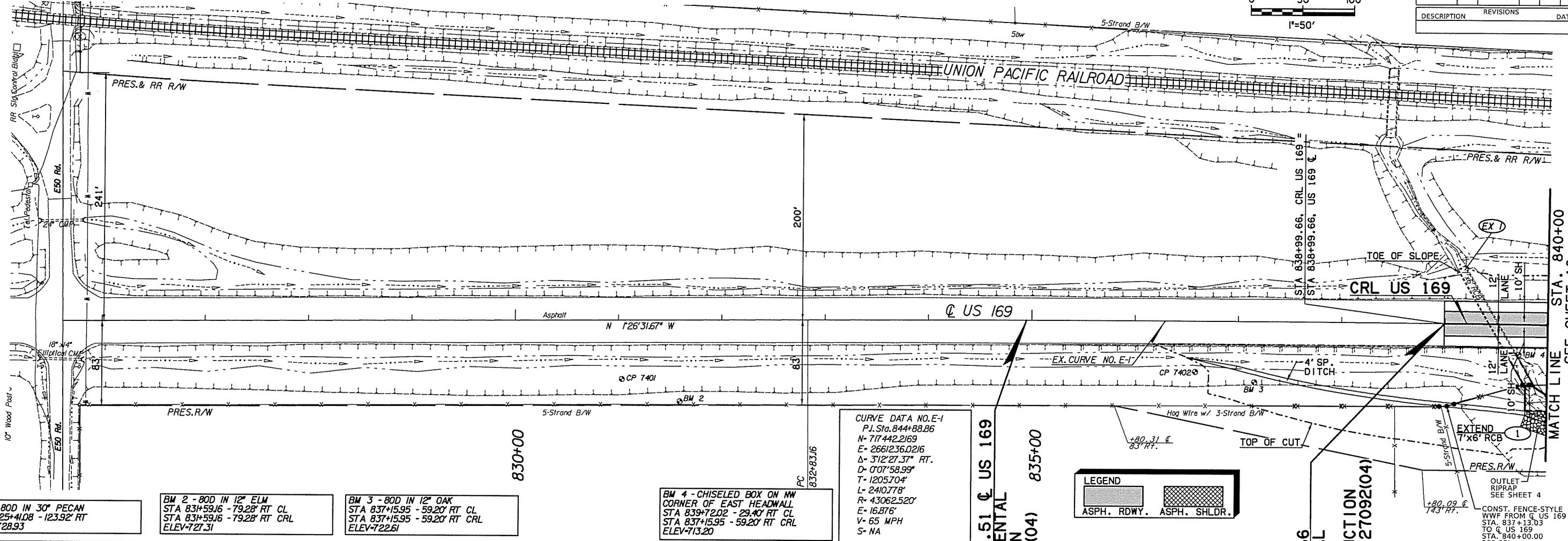
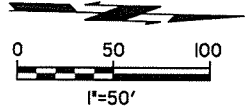
7/12/2016

7:46:49 AM

P:\ECN\650-TUL\CIV\25523\000_000T_LUS169Br-dg\20_DESGN\40_CAD_Opossum\Dgn\C\27092\041_C_Plan_Profile_01.dgn

SEC. 36, T29N, R15E

OKLAHOMA DEPARTMENT OF TRANSPORTATION					
DDOT DIVISION	STATE	JOB PIECE No.	FISCAL YEAR	SHEET No.	TOTAL SHEETS
8	OKLA	27092(04)		17	143
DESCRIPTION		REVISIONS	DATE		



BM 1 - 80D IN 30" PECAN
STA 825+4.08 - 123.92' RT
ELEV=728.93

BM 2 - 80D IN 12" ELM
STA 83+59.16 - 79.28' RT CL
STA 83+59.16 - 79.28' RT CRL
ELEV=721.31

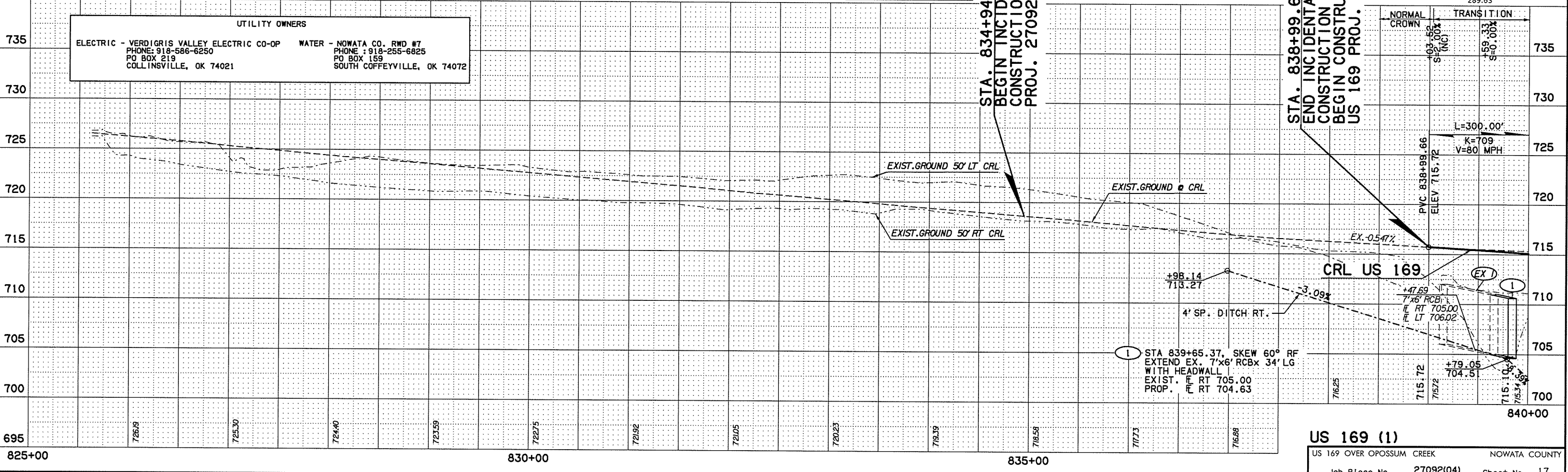
BM 3 - 80D IN 12" OAK
STA 837+15.95 - 59.20' RT CL
STA 837+15.95 - 59.20' RT CRL
ELEV=722.61

BM 4 - CHISELED BOX ON NW
CORNER OF EAST HEADWALL
STA 839+2.02 - 29.40' RT CL
STA 837+15.95 - 59.20' RT CRL
ELEV=713.20

CURVE DATA NO. E-1
P.I. Sta. 844+88.86
N= 717.442.2169
E= 2661236.0216
Δ= 312°27.37' RT.
D= 0°07'58.99"
T= 1205.704'
L= 2410.778'
R= 43062.520'
E= 16.876'
V= 65 MPH
S= NA

LEGEND

ASPH. RDWY. ASPH. SHLDR.



UTILITY OWNERS

ELECTRIC - VERDIGRIS VALLEY ELECTRIC CO-OP
PHONE: 918-586-6250
PO BOX 219
COLLINSVILLE, OK 74021

WATER - NOWATA CO. RWD #7
PHONE: 918-255-6825
PO BOX 159
SOUTH COFFEYVILLE, OK 74072