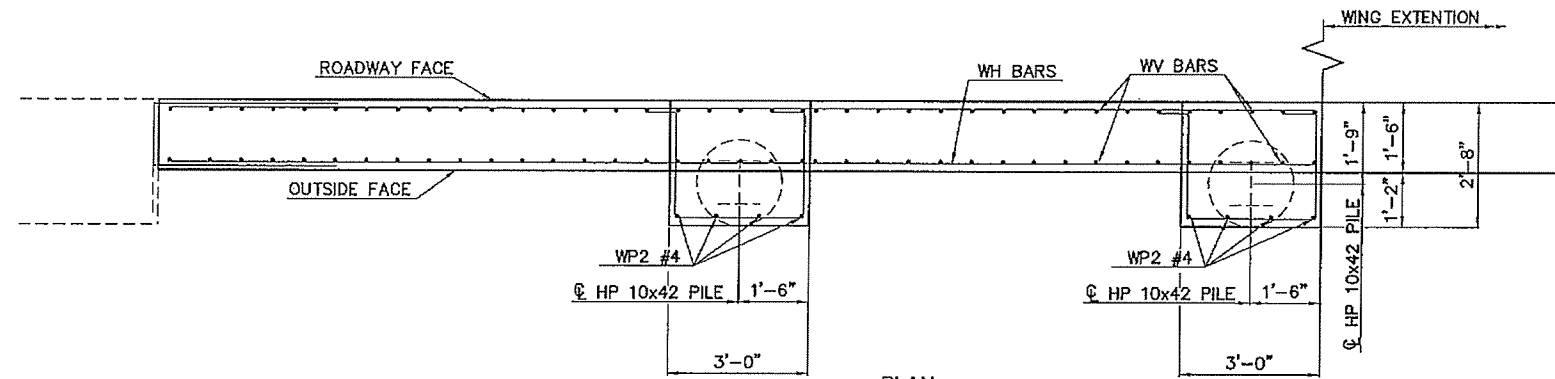
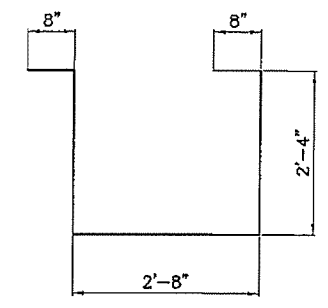


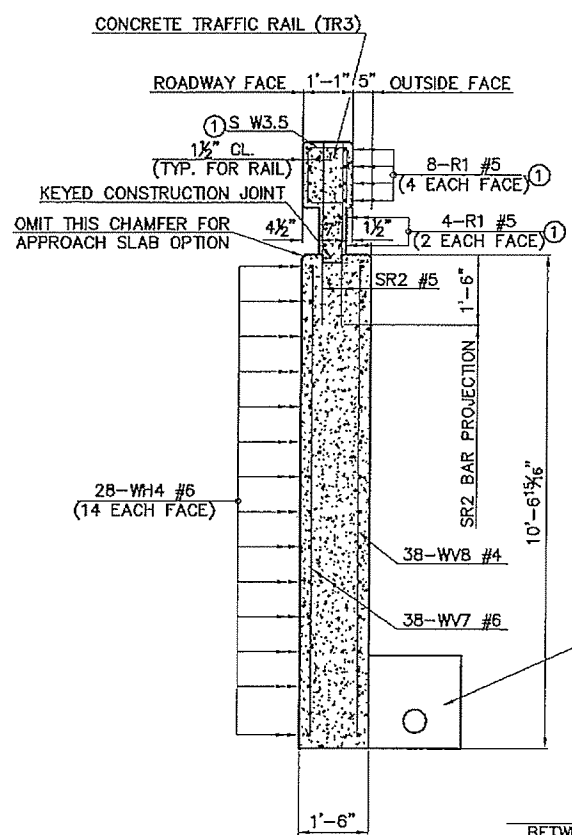
DESCRIPTION	REVISION	DATE



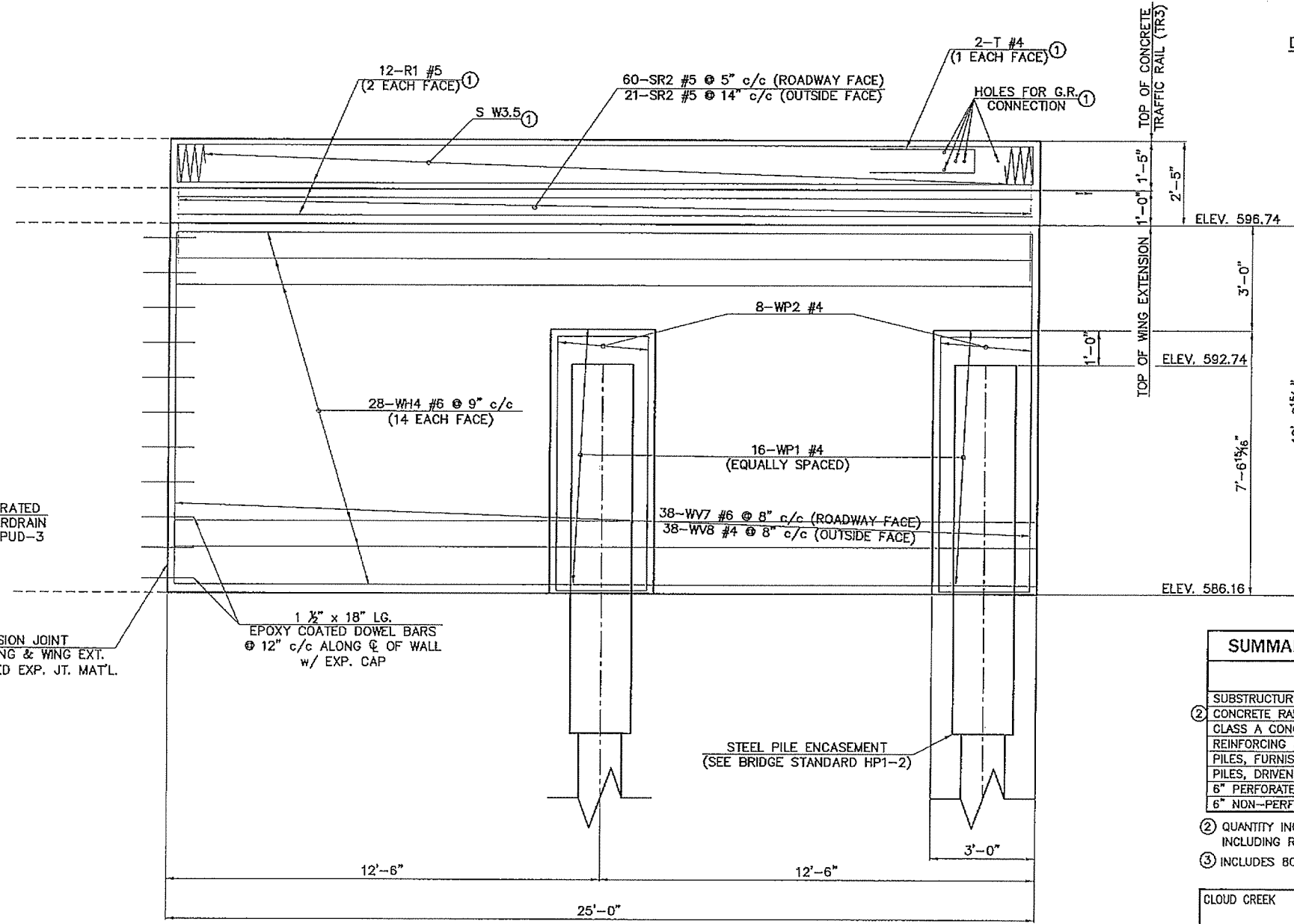
PLAN  
CONCRETE TRAFFIC RAIL (TR3) NOT SHOWN  
BRIDGE SEAT SHOWN WITHOUT SKEW



WP1 #4 X 8'-8"  
DETAILS OF BENT REINFORCING STEEL



SECTION THRU WALL EXTENSION



ELEVATION  
WING EXTENSION

BAR LIST - WING EXTENSION

MARK	NO.	SIZE	FORM	LENGTH	LENGTH VARIATION
SR2	81	#5	STR.	3'-9"	-
WH4	28	#6	STR.	24'-8"	-
WV7	38	#6	STR.	10'-1"	-
WV8	38	#4	STR.	10'-1"	-
WP1	16	#4	BNT.	8'-8"	-
WP2	8	#4	STR.	7'-2"	-

SUMMARY OF QUANTITIES - WING EXTENSION

ITEM	UNIT	TOTAL
SUBSTRUCTURE EXCAVATION, COMMON	C.Y.	54.00
CONCRETE RAIL (TR3)	L.F.	25.00
CLASS A CONCRETE	C.Y.	16.70
REINFORCING STEEL	LBS.	2400.00
PILES, FURNISHED (HP 10X42)	L.F.	40.00
PILES, DRIVEN (HP 10X42)	L.F.	40.00
6" PERFORATED PIPE UNDERDRAIN, ROUND	L.F.	15.00
6" NON-PERFORATED PIPE UNDERDRAIN, ROUND	L.F.	25.00

- ② QUANTITY INCLUDES ALL COST OF CONCRETE TRAFFIC RAIL (TR3) INCLUDING R1, S AND T REINFORCING STEEL BARS AND CONCRETE.
- ③ INCLUDES 80 LBS FOR 11- 1 1/2" x 18" EPOXY COATED DOWEL BARS.

CLOUD CREEK MUSKOGEE COUNTY

WING DETAILS

STATE OF OKLAHOMA DEPARTMENT OF TRANSPORTATION

State J/P No. 31162(04) Sheet No. 11

Design TE 08/14  
Detail IS 08/14  
Check TE 08/14

HOLLOWAY  
UPDIKE &  
BULLEN, INC.

① SEE BRIDGE STANDARD TR3-2 FOR DETAILS NOT SHOWN.

HUB ENGINEERS  
 Time of Plot: 6/13/2016 10:41 AM Plot Style: -HUB-HALF.DTB  
 C:\3014\1\4\CD\005\DESIGN\Production\Plans\WING DETAIL.dwg