

BRACING NOTES

THE CONTRACTOR SHALL SUBMIT TO THE ENGINEER FOR APPROVAL, DRAWINGS OF THE BRACING SYSTEM TO BE USED. BRACING SYSTEM SHALL BE APPROVED BY THE ENGINEER BEFORE ANY FLOOR CONCRETE IS PLACED.

CANTILEVER FORMING BRACKETS SHALL BE USED AT EXTERIOR GIRDERS TO PREVENT GIRDER TWIST. ALL CANTILEVER FORMING BRACKETS SHALL BE ADJUSTABLE AND CAPABLE OF BEING ADJUSTED DURING THE PLACEMENT OF FLOOR CONCRETE IN ORDER TO MAINTAIN PROPER GRADES OF OVERHANG. IF THE CONTRACTOR USES SHIMS TO ADJUST THE FORMING BRACKETS, HE MUST PROVIDE THE ENGINEER A METHOD TO PREDICT THE CRUSH AND SETTLEMENT OF THE SHIMS. THE RESULTING FORCE OF THE LEG BRACE OF THE CANTILEVER BRACKETS SHALL BEAR ON THE WEB AND WITHIN 6 INCHES OF THE BOTTOM FLANGE OF THE GIRDERS. THE GIRDERS SHALL BE TIED TOGETHER AT 4'-0" INTERVALS AS SHOWN IN THE DETAILS.

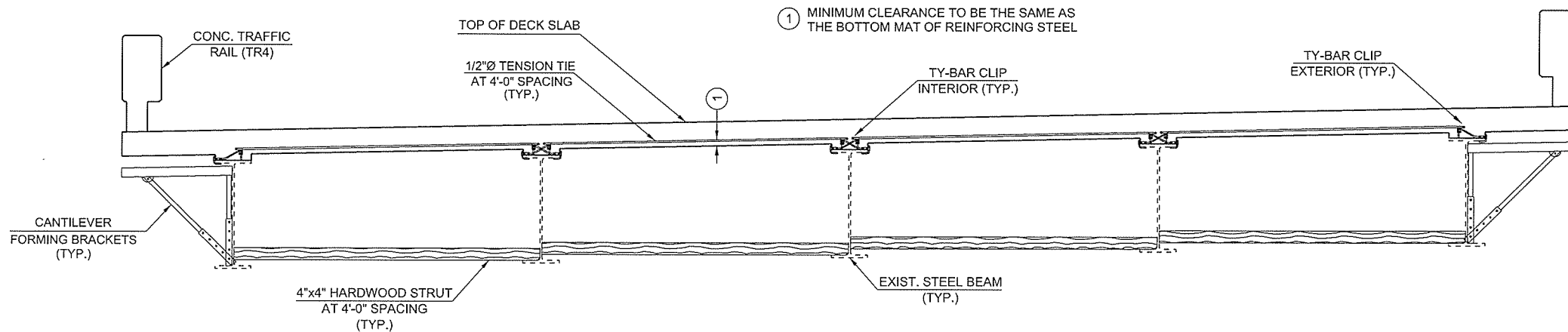
HARDWOOD 4"x4" STRUTS OR MATERIAL OF AN EQUIVALENT STRENGTH SHALL BE WEDGED BETWEEN WEBS OF GIRDERS WITHIN 6" OF THE BOTTOM FLANGE OF EACH GIRDER AT EACH LOCATION WHERE THE TOP OF THE GIRDERS ARE TIED TOGETHER WITH TENSION TIES.

TENSION TIES SHALL BE A MINIMUM #4 EPOXY-COATED REINFORCING STEEL BARS WITH THREADED ENDS OR 0.5 INCH GALVANIZED ALL-THREAD, FURNISHED BY THE CONTRACTOR. THE TENSION TIES SHALL BE PLACED PERPENDICULAR TO THE GIRDERS AND SHALL HAVE A MINIMUM CLEARANCE FROM THE DECK FORMWORK AS THE BOTTOM MAT OF TRANSVERSE REINFORCING BARS.

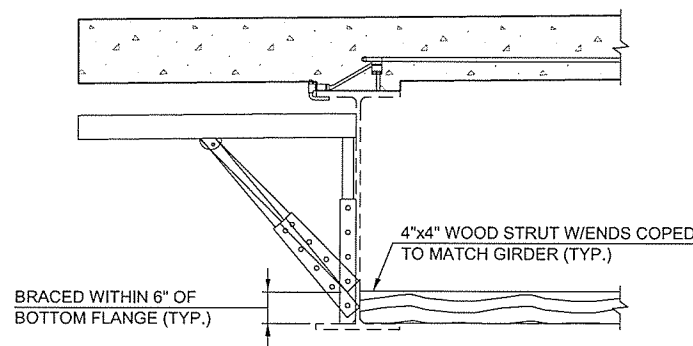
TENSION TIES SHALL BE ATTACHED TO THE TOP FLANGE OF GIRDERS BY MEANS OF TY-BAR CLIPS AS SHOWN ON DETAILS, WELDING CLIPS TO THE TOP FLANGE OF GIRDERS SHALL NOT BE PERMITTED.

IF THE CONTRACTOR ELECTS TO USE A FORMWORK BRACING SYSTEM OTHER THAN IS SHOWN IN THE PLANS, THE CONTRACTOR SHALL SUBMIT WORKING DRAWINGS AND CALCULATIONS OF THE BRACING SYSTEM TO THE ENGINEER FOR APPROVAL. DRAWINGS AND CALCULATIONS OF THE PROPOSED BRACINGS SHALL BE SIGNED AND SEALED BY A REGISTERED PROFESSIONAL ENGINEER REGISTERED IN THE STATE OF OKLAHOMA.

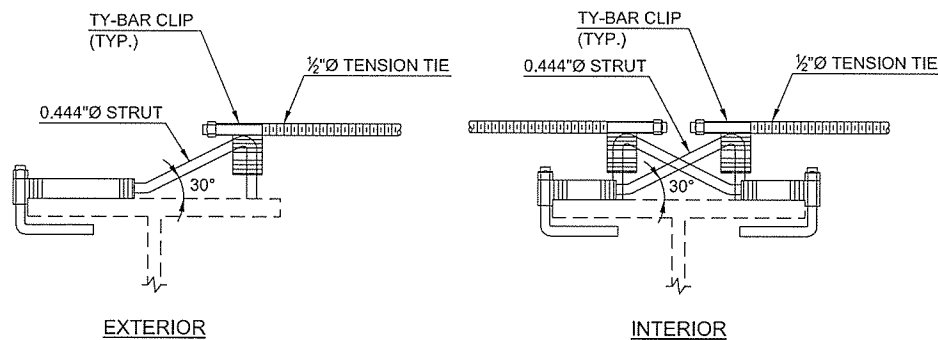
ALL COST FOR BRACING AND FORMWORK SHALL BE INCLUDED IN OTHER ITEMS OF WORK.



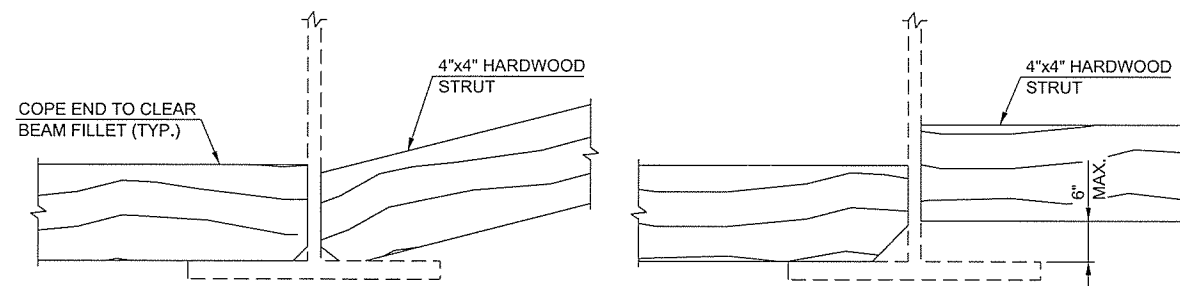
BRIDGE DECK FORMWORK



CANTILEVER FORMING BRACKETS SETTING



TY-BAR CLIP DETAIL (EPOXY COATED)



HARDWOOD STRUT COPING DETAIL

PRINT DATE: 7/15/2016 T:\1420\Drawings\Bridges\1420-formwork01.dgn

S.H. 74 OVER I-35

McCLAIN CO.

DESIGN	GDD
DRAWN	ZTF
CHECKED	JTK
APPROVED	
SQUAD	MacArthur

OKLAHOMA DEPARTMENT OF TRANSPORTATION

DETAILS OF BRIDGE DECK FORMWORK BRACING

STATE JOB NO. 29572(04) SHEET NO. 23