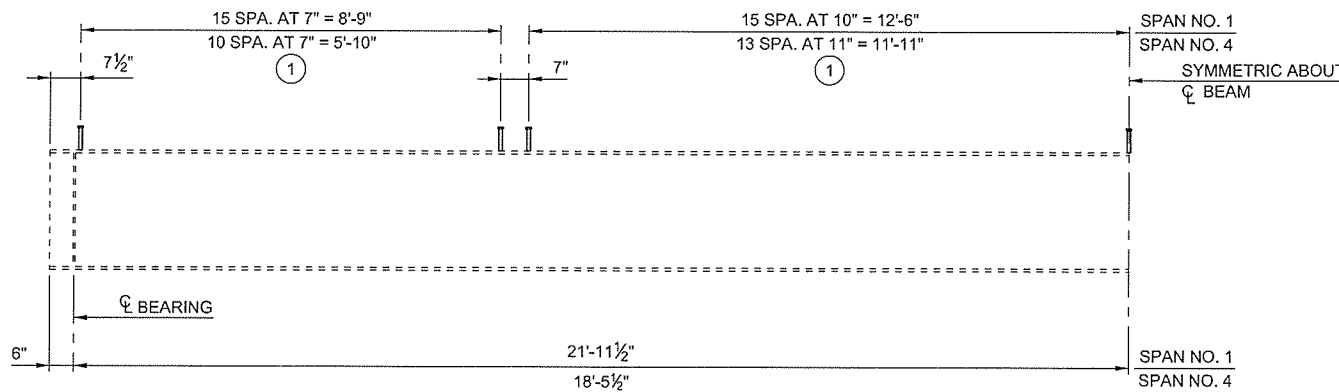
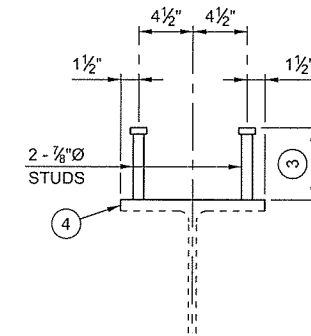


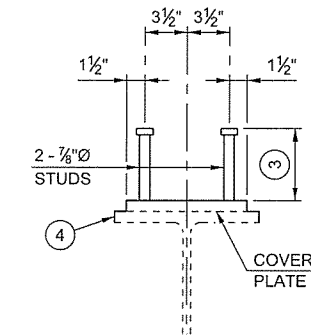
SHEAR STUD LAYOUT - W36X150
(SPAN NO. 2 AND 3)



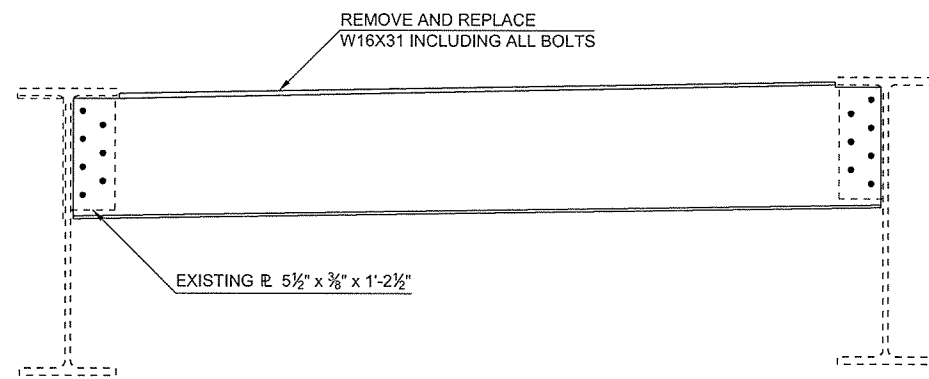
SHEAR STUD LAYOUT - W30X108 AND W30X99



SHEAR CONNECTOR DETAILS
(W36X150)



SHEAR CONNECTOR DETAILS
(W30X108 AND W30X99)



END DIAPHRAGM REPLACEMENT DETAIL
REPLACE BRIDGE ITEM, TYPE A

BRIDGE REPAIR NOTES

GENERAL NOTES

ALL SUPERSTRUCTURE REPAIRS, AS NOTED BELOW, SHALL BE MADE AFTER REMOVAL OF EXISTING BRIDGE DECK AND PRIOR TO PLACEMENT OF NEW BRIDGE DECK.

REPLACE BRIDGE ITEM (TYPE A): END DIAPHRAGM

REMOVE AND REPLACE PORTION OF END DIAPHRAGM AS DETAILED ON THIS SHEET. REMOVE AND REPLACE BOLTS, WASHERS AND NUTS IN-KIND TO ATTACH NEW W16X31. BOLT SPACING DETAILED IS ESTIMATED, CONTRACTOR SHALL FIELD VERIFY. EXISTING SURFACE IN CONTACT WITH THE DIAPHRAGM SHALL BE CLEANED OF RUST AND PAINT.

REPLACE BRIDGE ITEM (TYPE B): EXPANSION ROLLER BEARING RESETTING

RESET EXPANSION ROLLER BEARINGS TO A VERTICAL POSITION. USE FALSEWORK AS REQUIRED, AND IF GIRDER BEARING STIFFENER IS MORE THAN 2" OUT OF ALIGNMENT WITH VERTICAL PLATE IN ROLLER, AN ADDITIONAL BEARING STIFFENER OF LIKE SIZE SHALL BE WELDED TO THE GIRDER. EXPANSION ROLLER RESETTING TO BE PAID FOR UNDER "REPAIR BRIDGE ITEM (TYPE B)".

- ① ALL BEAMS SHALL HAVE CONNECTORS ADDED AS SHOWN. ADJUST SPACING AS REQUIRED TO CLEAR EXISTING SHEAR CONNECTORS IF PRESENT. STUD WELDING SHALL BE IN ACCORDANCE WITH AWS D1.1, AND COST TO BE INCLUDED IN PAY ITEM "STRUCTURAL STEEL."
- ② ADJUST SPACING OF STUDS EITHER SIDE OF SPLICE PLATE LOCATIONS. MINIMUM LONGITUDINAL SPACING OF SHEAR CONNECTORS IS 6".
- ③ 6 5/8" (BRIDGE "A": BEAM 1, 2, AND 3. BRIDGE "B": BEAM 3, 4, AND 5.)
7 3/8" (BRIDGE "A": BEAM 4 AND 5. BRIDGE "B": BEAM 1 AND 2.)
- ④ THE TOP AND SIDES OF THE TOP FLANGE OF ALL BEAMS SHALL BE CLEANED AND PAINTED IN ACCORDANCE WITH SECTION 512 OF THE STANDARD SPECIFICATIONS WITH A CATEGORY "E" APPLICATION. SSPC-QP-2 CERTIFICATION WILL NOT BE REQUIRED. THE CONTRACTOR NEED ONLY APPLY THE FIRST COAT OR PRIME COAT TO THE TOP FLANGE OF ALL BEAMS. CLEANING OF THE BEAMS SHALL TAKE PLACE PRIOR TO THE WELDING OF THE NEW SHEAR CONNECTORS; PAINTING SHALL TAKE PLACE AFTER THE WELDING OF THE NEW SHEAR CONNECTORS. THE COLOR OF PAINT MUST MATCH THE COLOR OF PAINT ON THE EXISTING BEAMS. COST INCLUDED IN PAY ITEM "PAINTING EXISTING STRUCTURE."

PRINT DATE: 7/15/2016 T:\1420Drawings\Bridges\1420-beam02.dgn

S.H. 74 OVER I-35

McCLAIN CO.

DESIGN	GDD	OKLAHOMA DEPARTMENT OF TRANSPORTATION BEAM REPAIR DETAILS STATE JOB NO. 29572(04) SHEET NO. 20
DRAWN	EMH	
CHECKED	JTK	
APPROVED		
SQUAD	MacArthur	