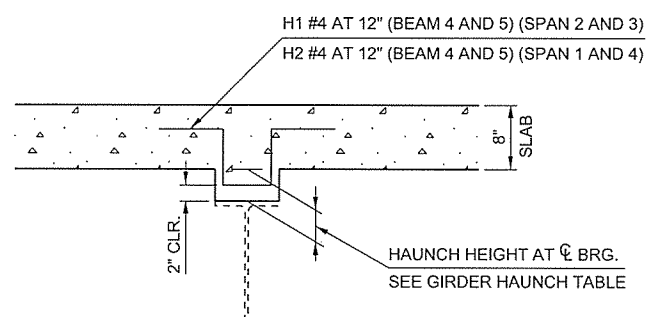


HALF SECTION AT MIDSPAN

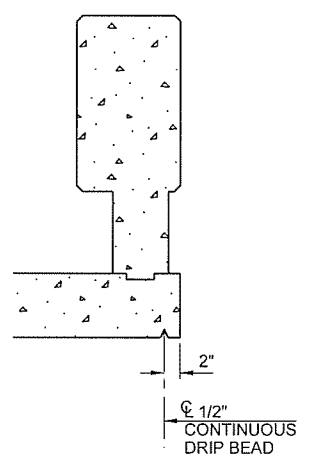
HALF SECTION AT PIER NO. 2

TYPICAL CROSS SECTION

① ONE EQUALLY SPACED BETWEEN A #6 BARS



GIRDER HAUNCH DETAIL

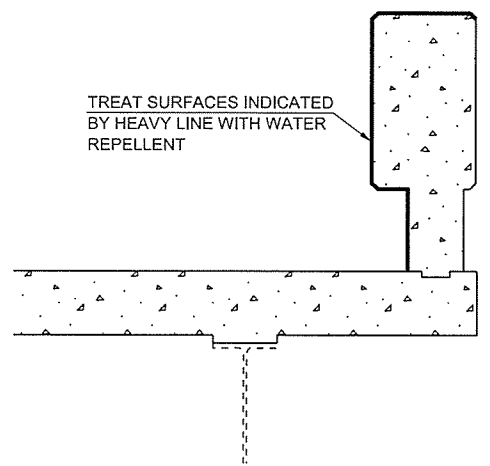


DETAIL "A"

NOTE
HAUNCH HEIGHT SHOWN IS AT CENTERLINE BEARING ONLY AND VARIES ACROSS THE SPAN. HAUNCH HEIGHT TO BE DETERMINED AFTER REMOVAL OF EXISTING SLAB TO PROVIDE FOR DEAD LOAD DEFLECTION AND GRADE ADJUSTMENT, BUT THE PAY QUANTITY WILL BE AS SHOWN ON THE PLANS.

COVER PLATE AT PIER NO. 3 EMBEDDED IN HAUNCH.

GIRDER HAUNCH TABLE - BRIDGE "A"					
LOCATION	BEAM LINE NUMBER				
	1	2	3	4	5
ABUTMENT NO. 1	2 1/8"	2 9/16"	3"	3 1/2"	3 11/16"
PIER NO. 1 (BACK)	2 7/8"	3 5/16"	3 3/4"	4 1/4"	4 5/16"
PIER NO. 1 (FORWARD)	2 3/4"	3 1/4"	3 5/8"	4 1/8"	4 9/16"
PIER NO. 2	2"	2 7/16"	2 13/16"	3 5/16"	3 3/4"
PIER NO. 3 (BACK)	2 1/4"	2 11/16"	3 1/8"	3 5/8"	4"
PIER NO. 3 (FORWARD)	2 1/4"	2 3/4"	3 1/8"	3 5/8"	4"
ABUTMENT NO. 2	2"	2 7/16"	2 7/8"	3 3/8"	3 3/4"



WATER REPELLENT SURFACE TREATMENT

SUPERSTRUCTURE QUANTITIES - BRIDGE "A"		
DESCRIPTION	UNIT	TOTAL
SAW-CUT GROOVING	SY	975.00
SEALED EXPANSION JOINT	LF	98.60
CONCRETE RAIL (TR4)	LF	461.50
STRUCTURAL STEEL	LB	5,310.00
CLASS AA CONCRETE	CY	246.00
EPOXY COATED REINFORCING STEEL	LB	80,820.00
WATER REPELLENT (VISUALLY INSPECTED)	SY	215.00
SEALER CRACK PREPARATION	LF	99.60
SEALER RESIN	GAL	2.00
(PL) REPAIR BRIDGE ITEM (TYPE B)	EA	20.00
(PL) REPLACE BRIDGE ITEM (TYPE A)	EA	4.00

DESIGN
DRAWN
CHECKED
APPROVED
SQUAD

GDD
ZTF
JTK

MacArthur

OKLAHOMA DEPARTMENT OF TRANSPORTATION

TYPICAL CROSS SECTION - BRIDGE "A"

STATE JOB NO. 29572(04) SHEET NO. 16