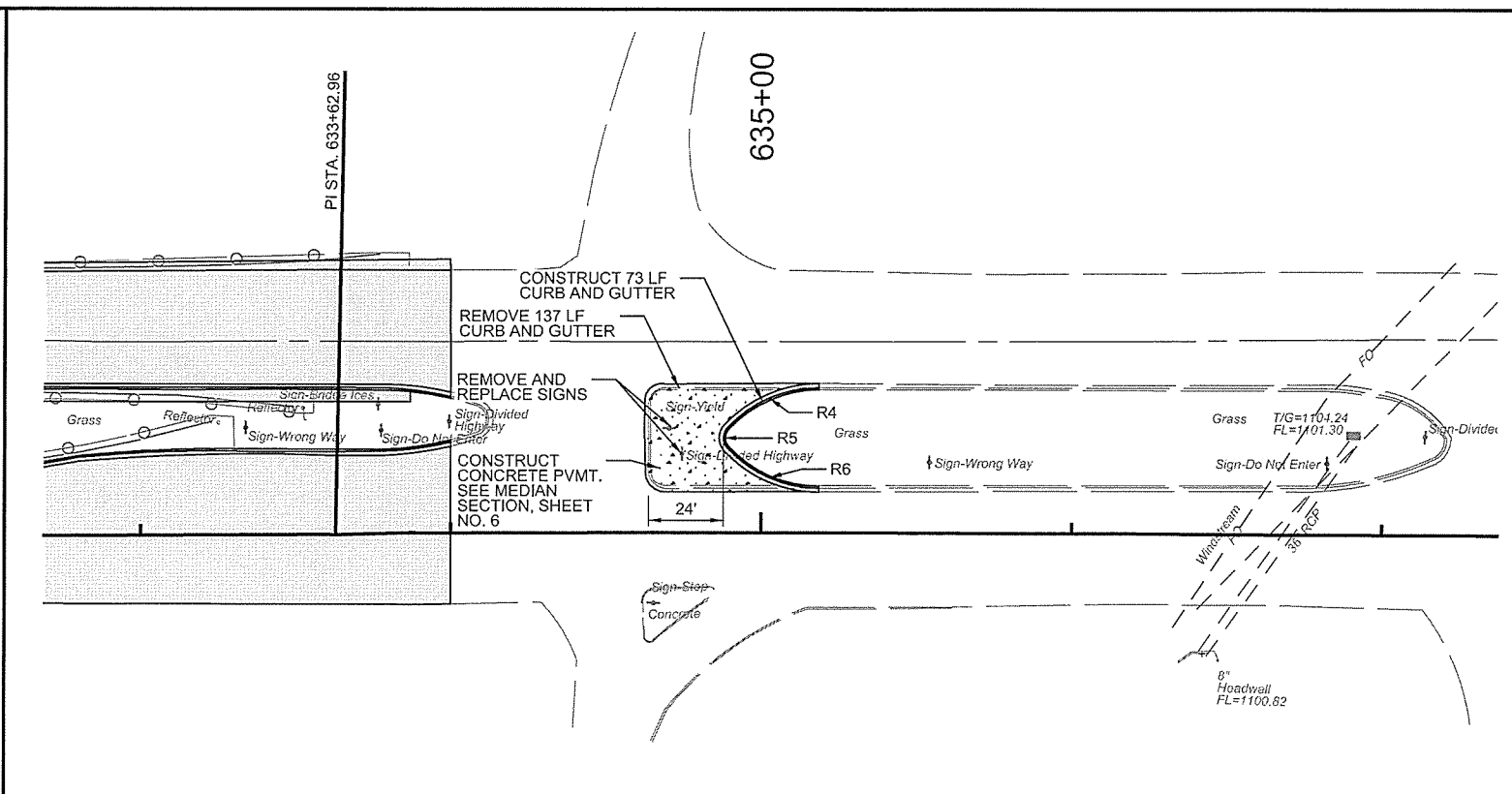


CURVE #	RADIUS	RADIUS PT. COORDINATE
R1	40'	N= 600402.79 E= 2156031.83
R2	5'	N= 600403.92 E= 2156051.21
R3	40'	N= 600384.52 E= 2156049.66

MEDIAN 1

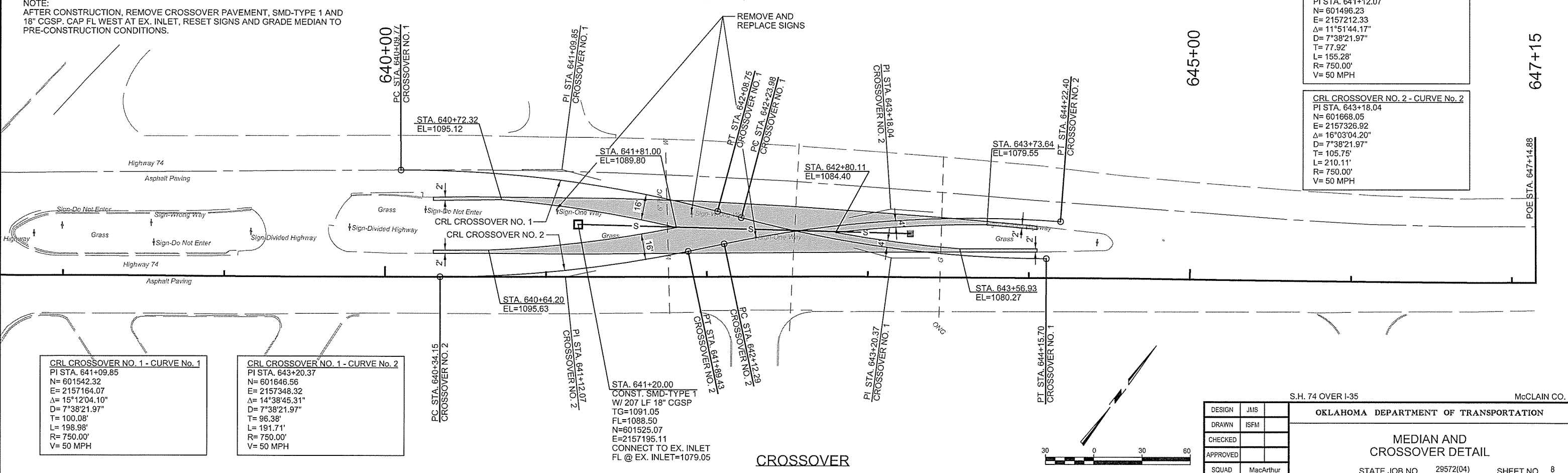


CURVE #	RADIUS	RADIUS PT. COORDINATE
R4	40'	N= 601101.98 E= 2156745.29
R5	5'	N= 601082.52 E= 2156743.83
R6	40'	N= 601083.60 E= 2156763.36

MEDIAN 2

SEC. 23, T-6-N, R-2-W

NOTE:  
AFTER CONSTRUCTION, REMOVE CROSSOVER PAVEMENT, SMD-TYPE 1 AND 18" CGSP. CAP FL WEST AT EX. INLET, RESET SIGNS AND GRADE MEDIAN TO PRE-CONSTRUCTION CONDITIONS.



CRL CROSSOVER NO. 2 - CURVE No. 1  
PI STA. 641+12.07  
N= 601496.23  
E= 2157212.33  
Δ= 11°51'44.17"  
D= 7°38'21.97"  
T= 77.92'  
L= 155.28'  
R= 750.00'  
V= 50 MPH

CRL CROSSOVER NO. 2 - CURVE No. 2  
PI STA. 643+18.04  
N= 601668.05  
E= 2157326.92  
Δ= 16°03'04.20"  
D= 7°38'21.97"  
T= 105.75'  
L= 210.11'  
R= 750.00'  
V= 50 MPH

CRL CROSSOVER NO. 1 - CURVE No. 1  
PI STA. 641+09.85  
N= 601542.32  
E= 2157164.07  
Δ= 15°12'04.10"  
D= 7°38'21.97"  
T= 100.08'  
L= 198.98'  
R= 750.00'  
V= 50 MPH

CRL CROSSOVER NO. 1 - CURVE No. 2  
PI STA. 643+20.37  
N= 601646.56  
E= 2157348.32  
Δ= 14°38'45.31"  
D= 7°38'21.97"  
T= 96.38'  
L= 191.71'  
R= 750.00'  
V= 50 MPH

STA. 641+20.00  
CONST. SMD-TYPE 1  
W/ 207 LF 18" CGSP  
TG=1091.05  
FL=1088.50  
N=601525.07  
E=2157195.11  
CONNECT TO EX. INLET  
FL @ EX. INLET=1079.05

DESIGN	JMS
DRAWN	ISFM
CHECKED	
APPROVED	
SQUAD	MacArthur

S.H. 74 OVER I-35  
McCLAIN CO.  
OKLAHOMA DEPARTMENT OF TRANSPORTATION  
MEDIAN AND CROSSOVER DETAIL  
STATE JOB NO. 29572(04) SHEET NO. 8

PRINT DATE: 7/15/2016 T:\1420\Drawings\Roadway\1420-CrossOver\01.dgn