

| OKLAHOMA DEPARTMENT OF TRANSPORTATION |       |           |             |           |              |
|---------------------------------------|-------|-----------|-------------|-----------|--------------|
| FED. ROAD DIST. NO.                   | STATE | PROJ. NO. | FISCAL YEAR | SHEET NO. | TOTAL SHEETS |
|                                       | OKLA. |           |             |           |              |
| DESCRIPTION                           |       | REVISIONS |             | DATE      |              |

SECTION CORNER - O.D.O.T. L-41-823  
 FOUND AND ACCEPTED MAG NAIL AS SHOWN ON  
 CORNER RECORD FILED BY CHARLES F. CAHILL, PLS 1005.

SECTION CORNER - O.D.O.T. L-41-819  
 FOUND AND ACCEPTED PK NAIL AS SHOWN ON CORNER  
 RECORD FILED BY BILLY GENE KNIGHT, PLS 1244.

SECTION CORNER - O.D.O.T. L-41-815  
 FOUND AND ACCEPTED RAILROAD SPIKE. THIS  
 MONUMENT APPEARS TO BE IN THE SAME LOCATION AS  
 SHOWN ON CORNER RECORD FILED BY BILLY GENE  
 KNIGHT, PLS 1244.

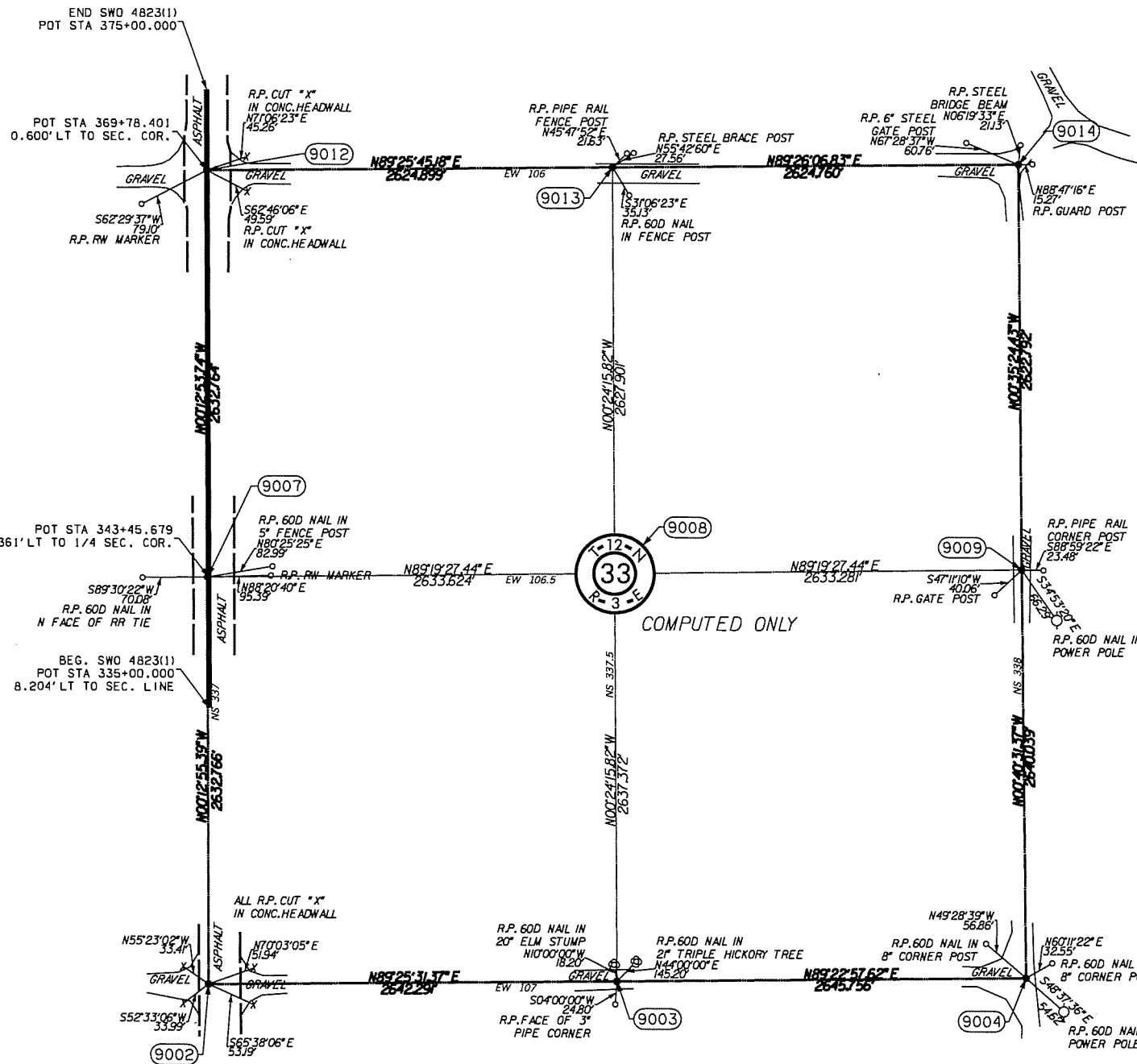
SECTION CORNER - O.D.O.T. L-41-824  
 FOUND AND ACCEPTED #4 REBAR. THIS MONUMENT FITS  
 WELL WITH SURROUNDING COLLATERAL EVIDENCE. THERE  
 WAS NO CORNER RECORD ON FILE.

SECTION CORNER - O.D.O.T. L-41-825  
 FOUND AND ACCEPTED #3 REBAR. THIS MONUMENT  
 APPEARS TO BE IN THE SAME LOCATION AS SHOWN ON  
 CORNER RECORD FILED BY CHARLES F. CAHILL, PLS 1005.  
 ALSO FOUND 80D NAIL 12.3' SOUTH OF CORNER.  
 MONUMENT SHOWN ON CORNER RECORD FILED BY  
 LARRY G. FOX, PLS 434 WAS FOUND LYING IN A DITCH  
 ON THE SIDE OF THE ROAD.

SECTION CORNER - O.D.O.T. L-41-820  
 FOUND AND ACCEPTED #4 REBAR. THIS MONUMENT  
 APPEARS TO BE IN THE SAME LOCATION AS SHOWN ON  
 CORNER RECORD FILED BY LARRY G. FOX, PLS 434.

SECTION CORNER - O.D.O.T. L-41-817  
 FOUND AND ACCEPTED #3 REBAR. THIS MONUMENT  
 APPEARS TO BE IN THE SAME LOCATION AS SHOWN ON  
 CORNER RECORD FILED BY LARRY G. FOX, PLS 434.

SECTION CORNER - O.D.O.T. L-41-816  
 FOUND AND ACCEPTED #3 REBAR AS SHOWN ON  
 CORNER RECORD FILED BY CHARLES REED, PLS 1660.



SCALE:  
 1" = 500'

NOTE: REFERENCE'S SHOWN ARE NOT TO SCALE.

|          |        |  |
|----------|--------|--|
| PLS      | SS     | OKLAHOMA DEPARTMENT OF TRANSPORTATION<br>SURVEY DIVISION |
| DRAWN    | SK     |  |
| CHECKED  | SS     |  |
| APPROVED | SS     |  |
| CREW     | PT, BB |  |
|          |        | <b>SURVEY DATA SHEET</b>                                 |
|          |        | SWO 4823 (1) PROJECT NO. 28941(04) SHEET NO. 5-9         |

September 24th, 2013