

OKLAHOMA DEPARTMENT OF TRANSPORTATION				
FED. ROAD DIST. NO.	STATE	PROJ. NO.	FISCAL YEAR	TOTAL SHEETS
	OKLA.			
DESCRIPTION		REVISIONS	DATE	

SECTION CORNER - O.D.O.T. L-41-821
 FOUND AND ACCEPTED #3 REBAR AS SHOWN ON
 CORNER RECORD FILED BY BILLIE D. SCHOOLEY, PLS
 1068.

SECTION CORNER - O.D.O.T. L-41-822
 FOUND AND ACCEPTED #3 REBAR AS SHOWN ON
 CORNER RECORD FILED BY BILLIE D. SCHOOLEY, PLS
 1068.

SECTION CORNER - O.D.O.T. L-41-823
 FOUND AND ACCEPTED MAG NAIL AS SHOWN ON
 CORNER RECORD FILED BY CHARLES F. CAHILL, PLS 1005.

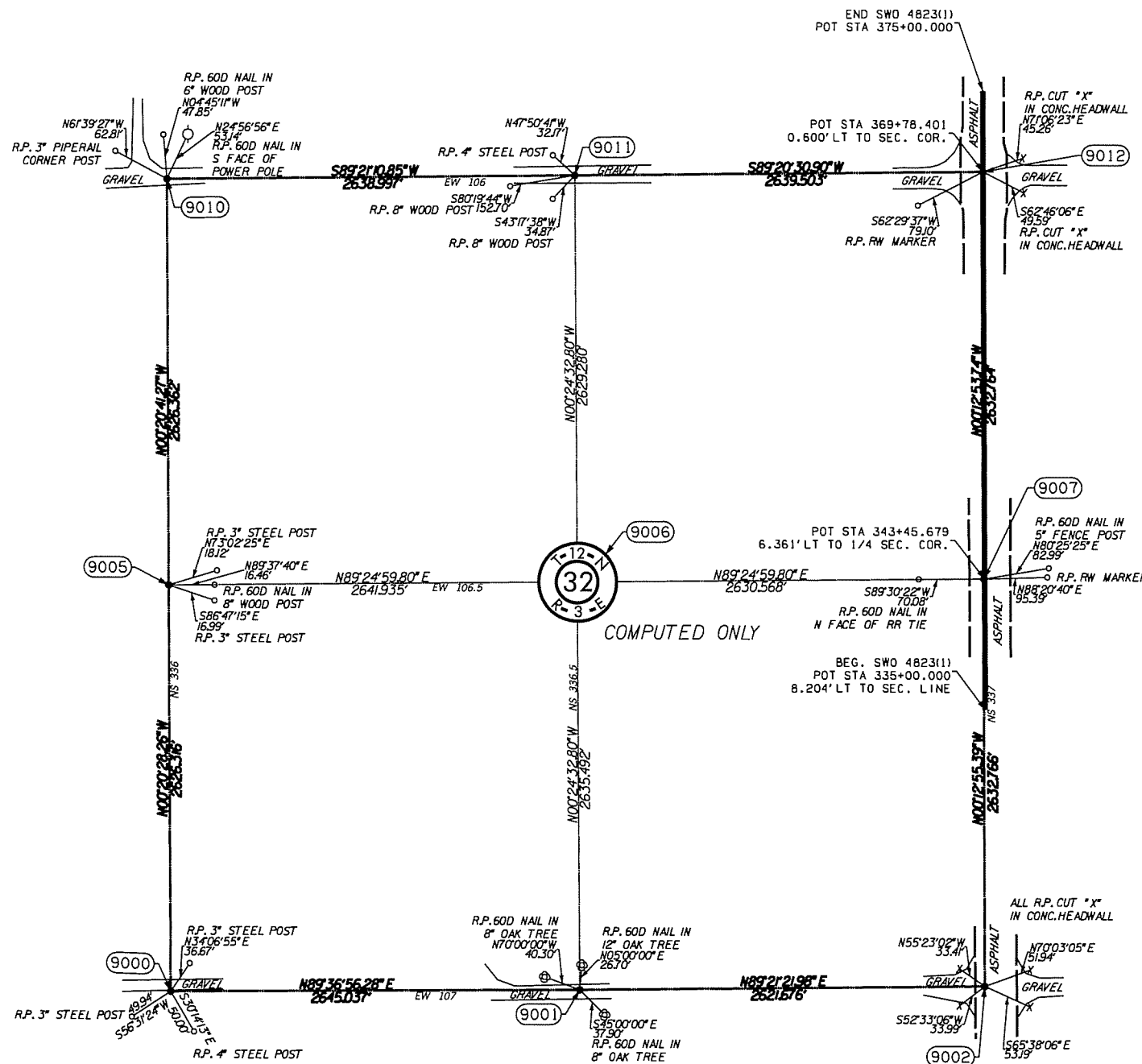
SECTION CORNER - O.D.O.T. L-41-818
 FOUND AND ACCEPTED #3 REBAR AS SHOWN ON
 CORNER RECORD FILED BY CHARLES REED, PLS 1660.

SECTION CORNER - O.D.O.T. L-41-819
 FOUND AND ACCEPTED PK NAIL AS SHOWN ON CORNER
 RECORD FILED BY BILLY GENE KNIGHT, PLS 1244.

SECTION CORNER - O.D.O.T. L-41-813
 FOUND AND ACCEPTED 1" CRIMPED PIPE AS SHOWN ON
 CORNER RECORD FILED BY CHARLES REED, PLS 1660.

SECTION CORNER - O.D.O.T. L-41-815
 FOUND AND ACCEPTED RAILROAD SPIKE. THIS
 MONUMENT APPEARS TO BE IN THE SAME LOCATION AS
 SHOWN ON CORNER RECORD FILED BY BILLY GENE
 KNIGHT, PLS 1244.

SECTION CORNER - O.D.O.T. L-41-814
 FOUND AND ACCEPTED #4 REBAR AS SHOWN ON
 CORNER RECORD FILED BY BILLY GENE KNIGHT, PLS
 1244.



SCALE:
 1" = 500'

NOTE: REFERENCE'S SHOWN ARE NOT TO SCALE.

PLS	SS	OKLAHOMA DEPARTMENT OF TRANSPORTATION
DRAWN	SK	SURVEY DIVISION
CHECKED	SS	SURVEY DATA SHEET
APPROVED	SS	
CREW	PT, BB	
SWO 4823 (1) PROJECT NO. 28941(04) SHEET NO. 5-8		