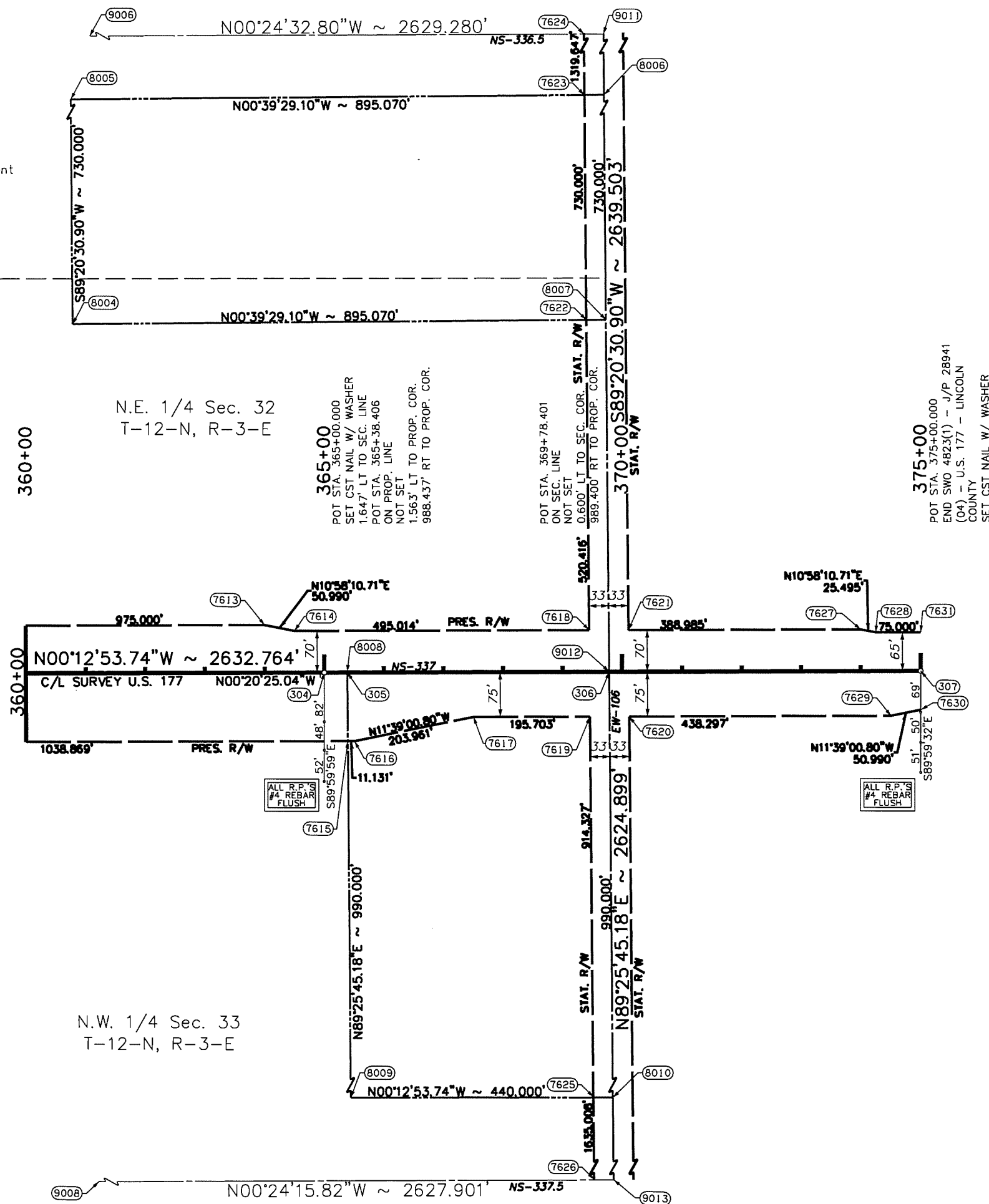


OKLAHOMA DEPARTMENT OF TRANSPORTATION						
FED. ROAD DIST. NO.	STATE	PROJ. NO.	SECTION	SHEET NO.	TOTAL SHEETS	DATE
	OKLA.					
DESIGNER		REVISIONS		DATE		

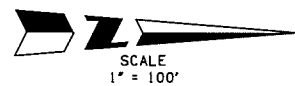
Lincoln County Conservation District Easement
Book 647, Page 254.



360+00
N.E. 1/4 Sec. 32
T-12-N, R-3-E

360+00
N.W. 1/4 Sec. 33
T-12-N, R-3-E

375+00
POT STA. 375+00.000
END SWO 4823(1) - J/P 28941
(04) - U.S. 177 - LINCOLN COUNTY
SET CST NAIL W/ WASHER



PLS	SS	OKLAHOMA DEPARTMENT OF TRANSPORTATION SURVEY DIVISION
DRAWN	SK	
CHECKED	SS	
APPROVED	SS	
CREW	PT, BB	
		SURVEY DATA SHEET
		SWO 4823 (1) PROJECT NO. 28941(04) SHEET NO. 5-7