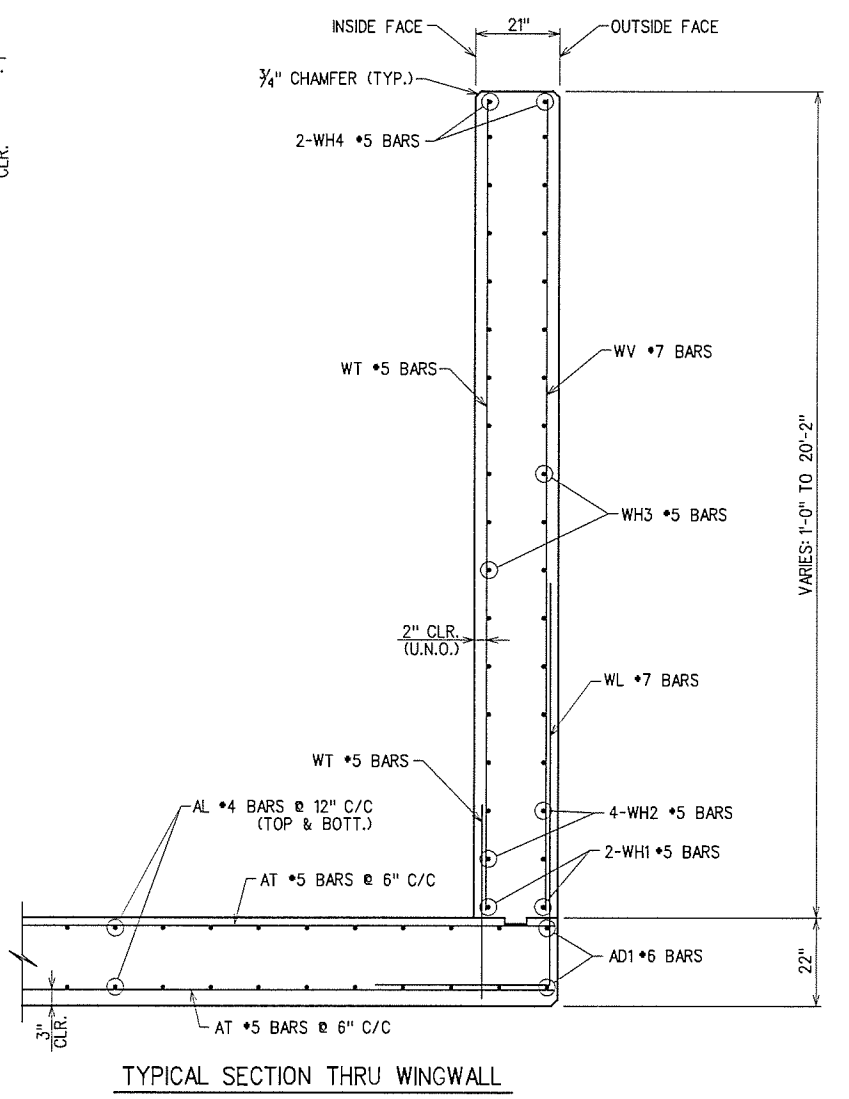


OUTLET WINGWALL ELEVATION

OUTLET WINGWALL BAR LIST					
ONE SHOWN, TWO REQUIRED					
MARK	NO.	SIZE	FORM	LENGTH	LENGTH VARIATION
PLAIN REINFORCING					
WD1	38	#9	BNT.	9'-2"	
WH1	2	#5	STR.	69'-4"	
WH2	4	#5	STR.	66'-5 1/2" (AVG.)	64'-9" TO 68'-2"
WH3	32	#5	STR.	32'-9" (AVG.)	6'-9" TO 58'-9"
WH4	2	#5	STR.	71'-6"	
WL1	46	#7	BNT.	13'-8"	
WL2	45	#7	BNT.	8'-11"	
WL3	20	#7	BNT.	8'-7 1/2" (AVG.)	6'-7" TO 10'-8"
WT1	69	#5	STR.	3'-11"	
WT2	1	#5	STR.	20'-0"	
WT3	68	#5	STR.	12'-8" (AVG.)	5'-5" TO 19'-11"
WT4	20	#5	STR.	4'-7 1/2" (AVG.)	2'-7" TO 6'-8"
WV1	1	#7	STR.	20'-0"	
WV2	68	#7	STR.	12'-8" (AVG.)	5'-5" TO 19'-11"
U1	1	#4	BNT.	6'-1"	

- ① INCLUDES 2'-6" FOR (1) LAP SPLICE
- ② 2 SETS OF 2 BARS
- ③ 2 SETS OF 16 BARS



TYPICAL SECTION THRU WINGWALL

X:\Odot\EC-1394F-2\Struc\Bridge-A\Headwall.dgn

12/8/2015