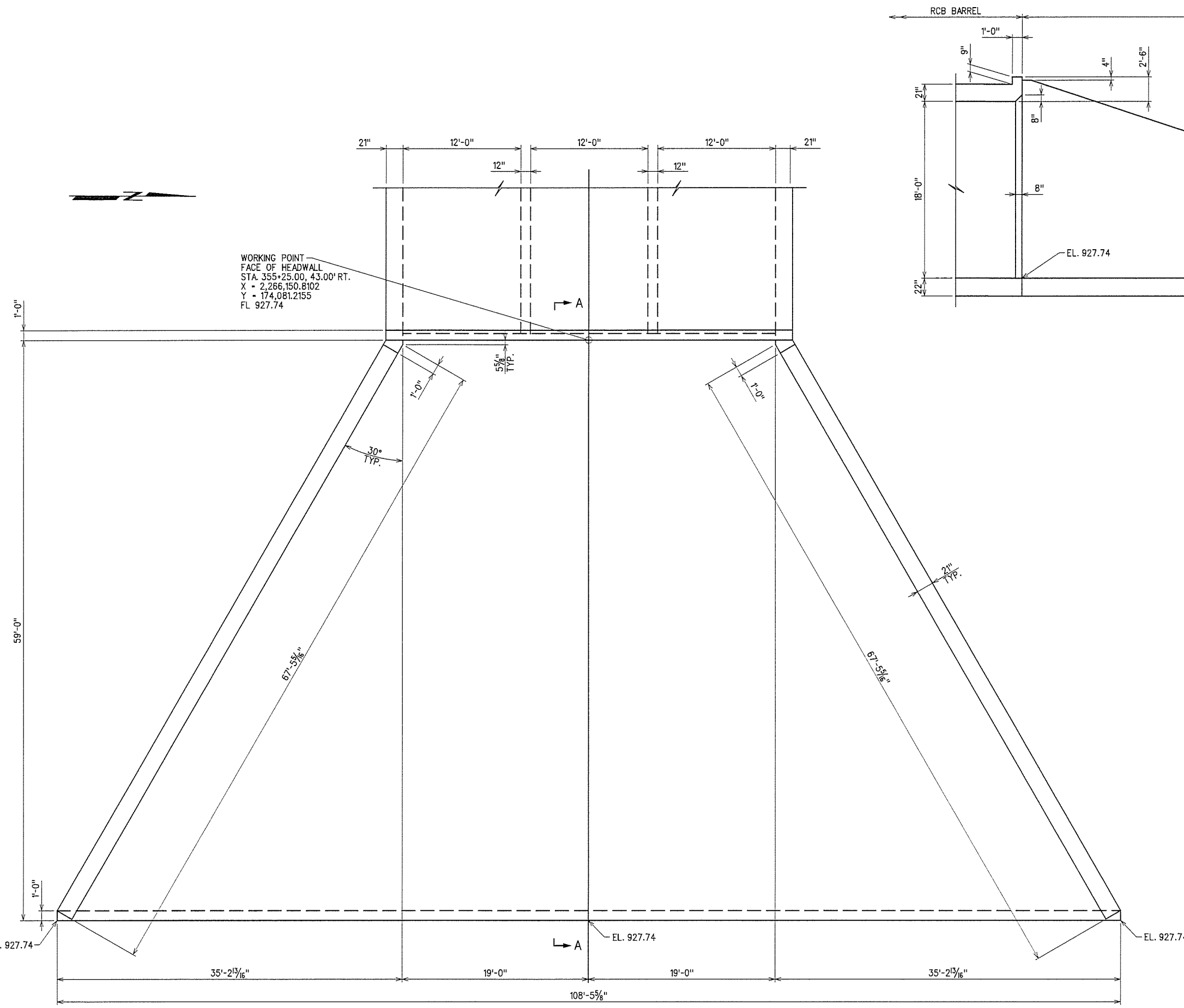
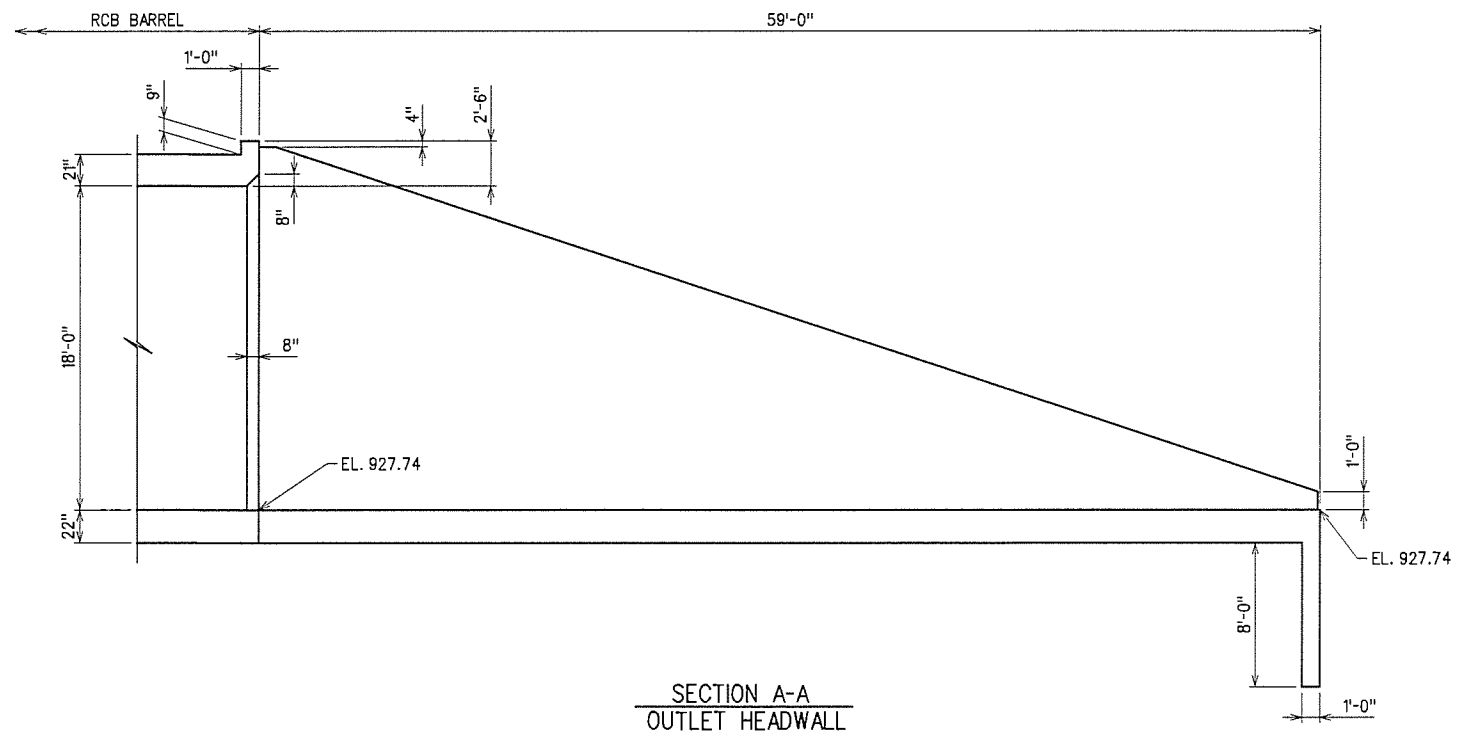


REV. NO.	DESCRIPTION	REVISIONS	DATE



PLAN
OUTLET HEADWALL



SECTION A-A
OUTLET HEADWALL

WORKING POINT
FACE OF HEADWALL
STA. 355+25.00, 43.00' RT.
X = 2,266,150.8102
Y = 174,081.2155
FL 927.74

NOTE:
1. SEE STD. RCB-E3-H10-0-1 AND RCB-E3-H10-0-2 FOR INLET HEADWALL, CURB, APRON AND WINGWALL DETAILS.
2. SEE STD. RCB-CW3-D8-0 FOR INLET CURTAIN WALL DETAILS.

12/8/2015 X:\Odot\EC-1394F-2\Struc\Bridge_A\Headwall.dgn

DESIGN		U.S. 177 OVER BRUSH CREEK	LINCOLN COUNTY
DRAWN		BRIDGE "A"	
CHECKED		HEADWALL DETAILS (1 OF 3)	
APPROVED			
SQUAD	G/K ENGR.	JOB PIECE NO. 2894104	SHEET NO. 36