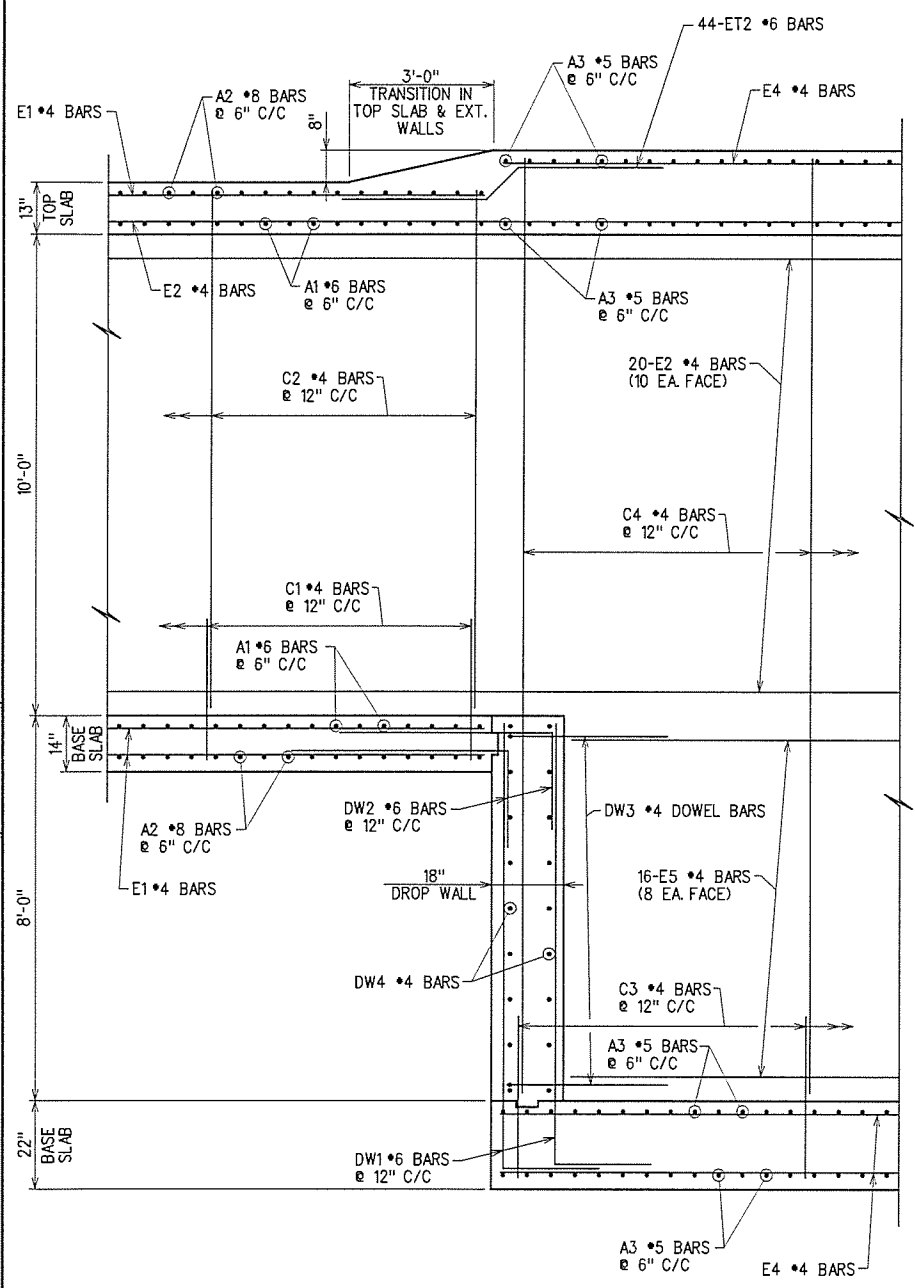
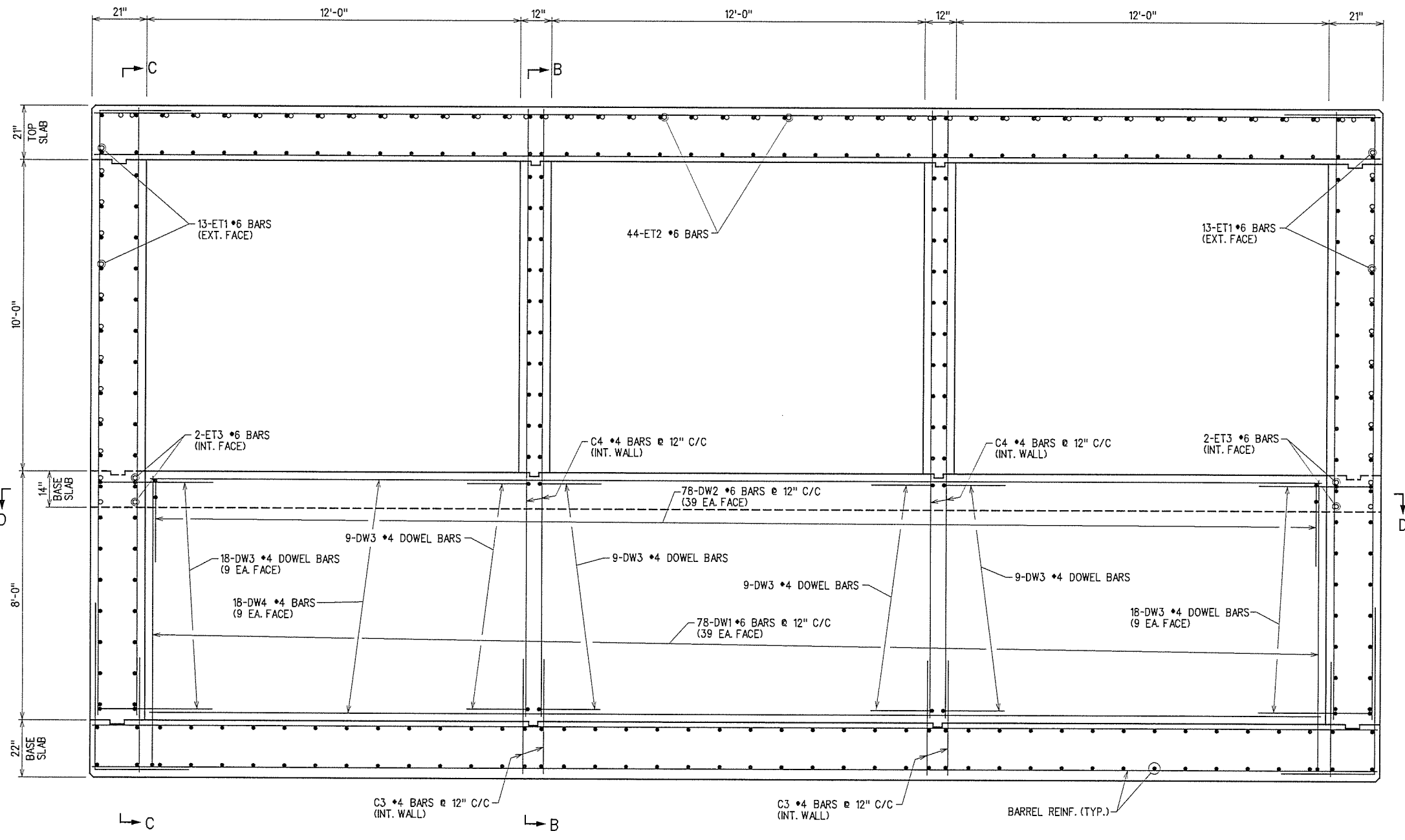


REV. NO.	DESCRIPTION	REVISIONS	DATE



SECTION B-B
INTERIOR WALL AT DROP WALL



SECTION A-A
INTERIOR DROP WALL

X:\Odot\EC-1394F-2\Struc\Bridge_A\Barrel.dgn
12/8/2015

DESIGN		U.S. 177 OVER BRUSH CREEK	LINCOLN COUNTY
DRAWN		BRIDGE "A"	
CHECKED		BARREL DETAILS (3 OF 4)	
APPROVED			
SQUAD	G/K ENGR.	JOB PIECE NO. 28941(04)	SHEET NO. 34