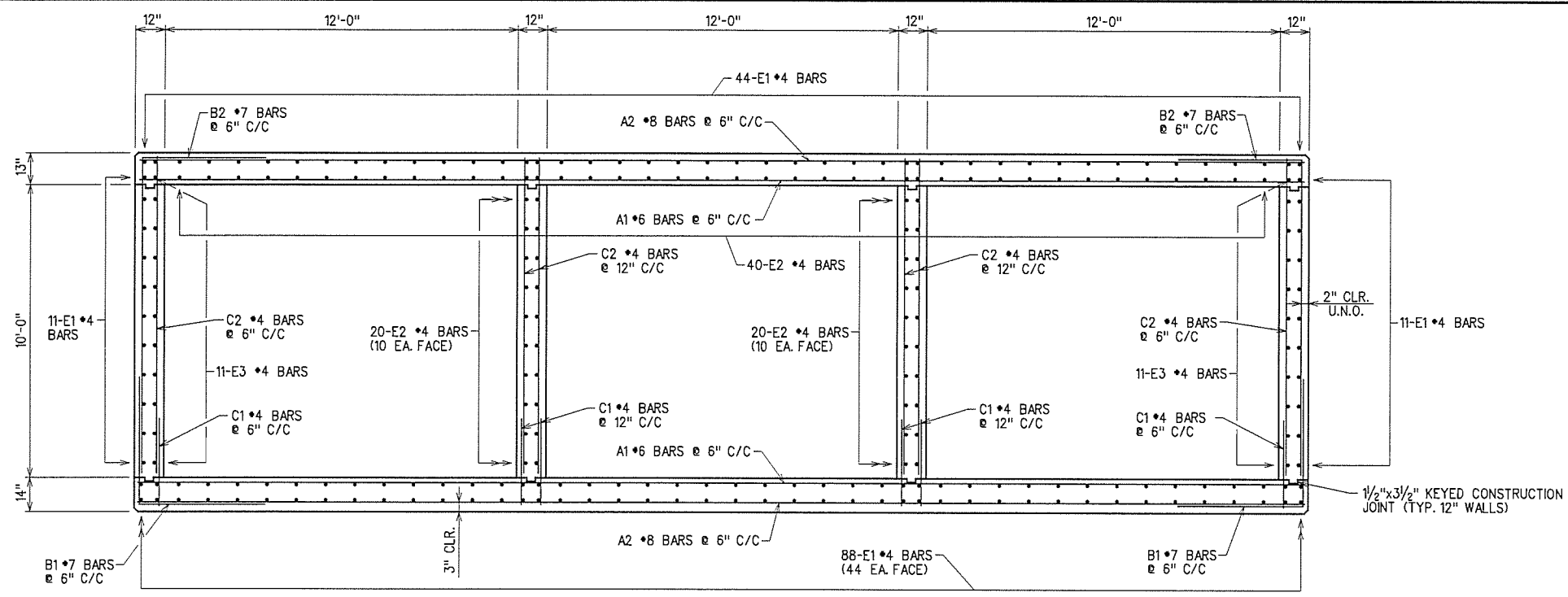
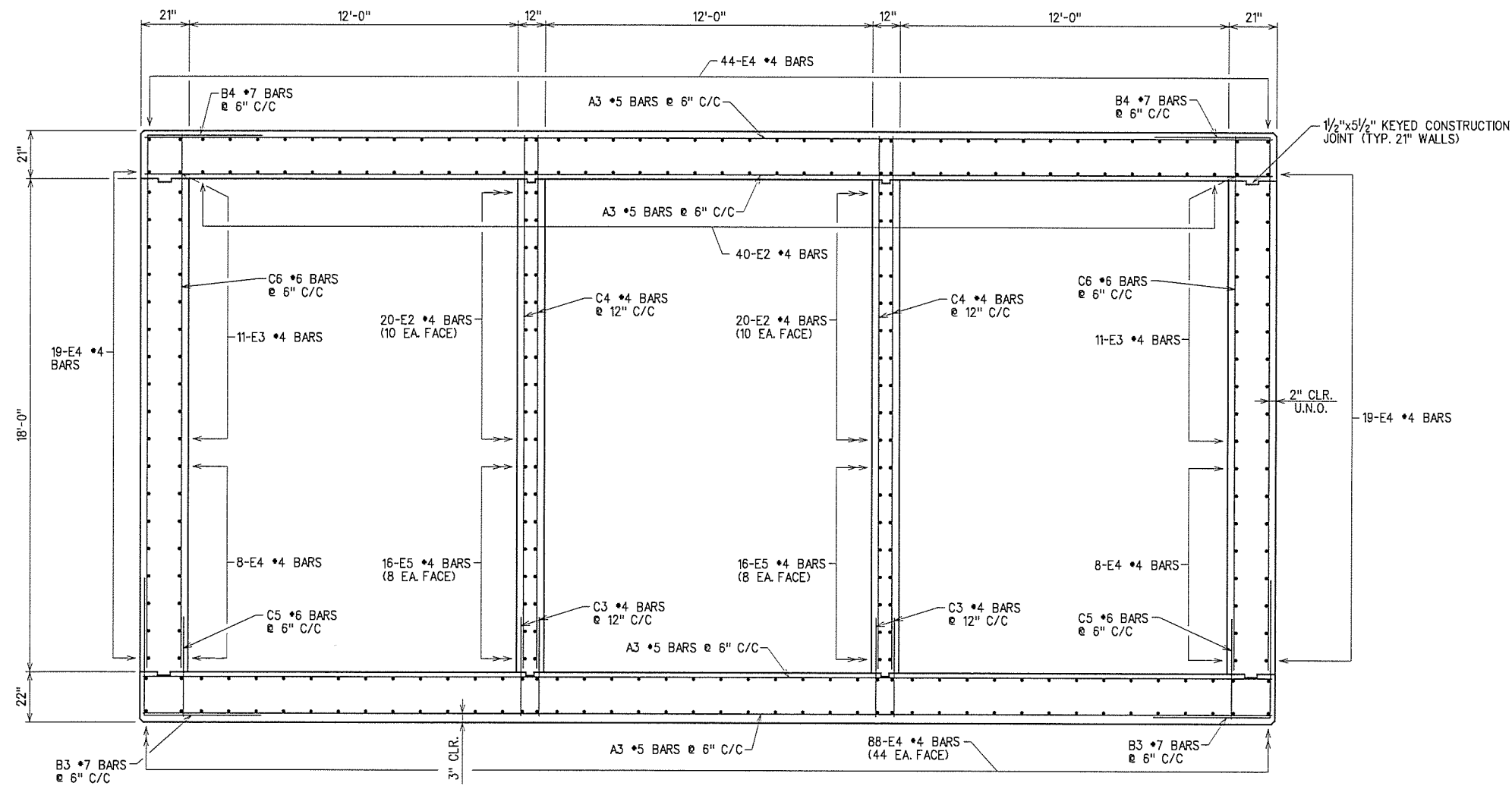


REV. NO.	DESCRIPTION	REVISIONS	DATE

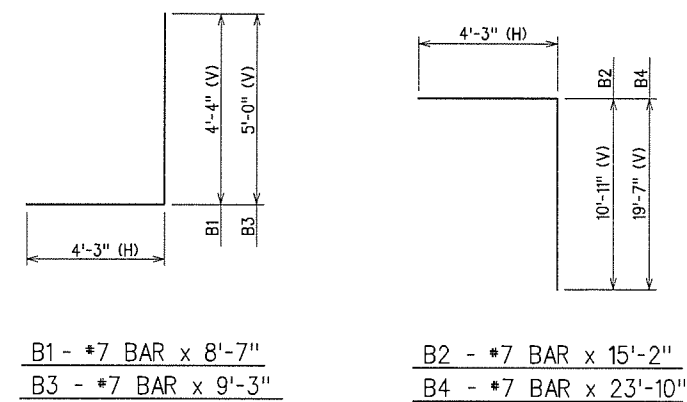


TRIPLE 12'x10' RC BARREL SECTION

BARREL BAR LIST				
MARK	NO.	SIZE	FORM	LENGTH
PLAIN REINFORCING				
A1	76	#6	STR.	39'-8"
A2	76	#8	STR.	39'-8"
A3	544	#5	STR.	41'-2"
B1	76	#7	BNT.	8'-7"
B2	76	#7	BNT.	15'-2"
B3	272	#7	BNT.	9'-3"
B4	272	#7	BNT.	23'-10"
C1	152	#4	STR.	3'-1"
C2	152	#4	STR.	10'-1"
C3	272	#4	STR.	3'-9"
C4	272	#4	STR.	19'-7"
C5	272	#6	STR.	4'-4"
C6	272	#6	STR.	19'-7"
E1	154	#4	STR.	18'-2"
E2	80	#4	STR.	84'-4"
E3	22	#4	STR.	85'-8"
E4	186	#4	STR.	67'-2"
E5	32	#4	STR.	65'-0"
ET1	26	#6	BNT.	7'-1"
ET2	44	#6	BNT.	6'-11"
ET3	4	#6	STR.	6'-4"
DW1	78	#6	BNT.	11'-4"
DW2	78	#6	BNT.	6'-6"
DW3	72	#4	BNT.	5'-8"
DW4	18	#4	STR.	37'-8"



TRIPLE 12'x18' RC BARREL SECTION



BAR BENDING DIAGRAMS

(ALL DIMENSIONS ARE OUT TO OUT)

NOTE:
(H) DIMENSION IS IN HORIZONTAL POSITION IN SECTION
(V) DIMENSION IS IN VERTICAL POSITION IN SECTION

X:\0dot\EC-1394F-2\Struc\Bridge_A\Barrel.dgn

12/8/2015

DESIGN		U.S. 177 OVER BRUSH CREEK	LINCOLN COUNTY
DRAWN		BRIDGE "A"	
CHECKED			
APPROVED			
SQUAD	G/K ENGR.	JOB PIECE NO. 28941(04)	SHEET NO. 33

BARREL DETAILS
(2 OF 4)