



SCALE:
1" = 50'

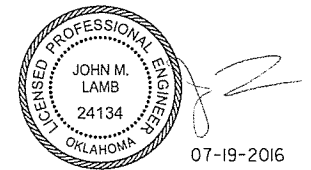
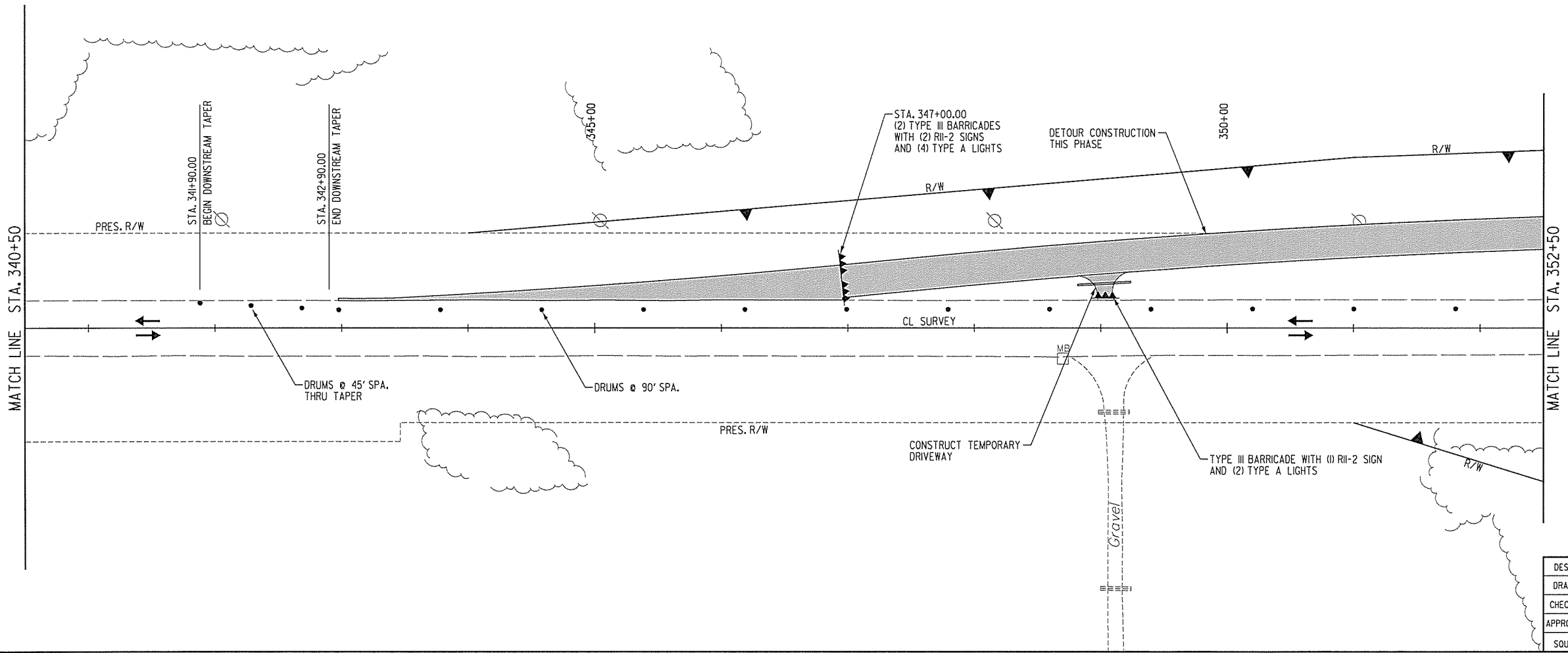
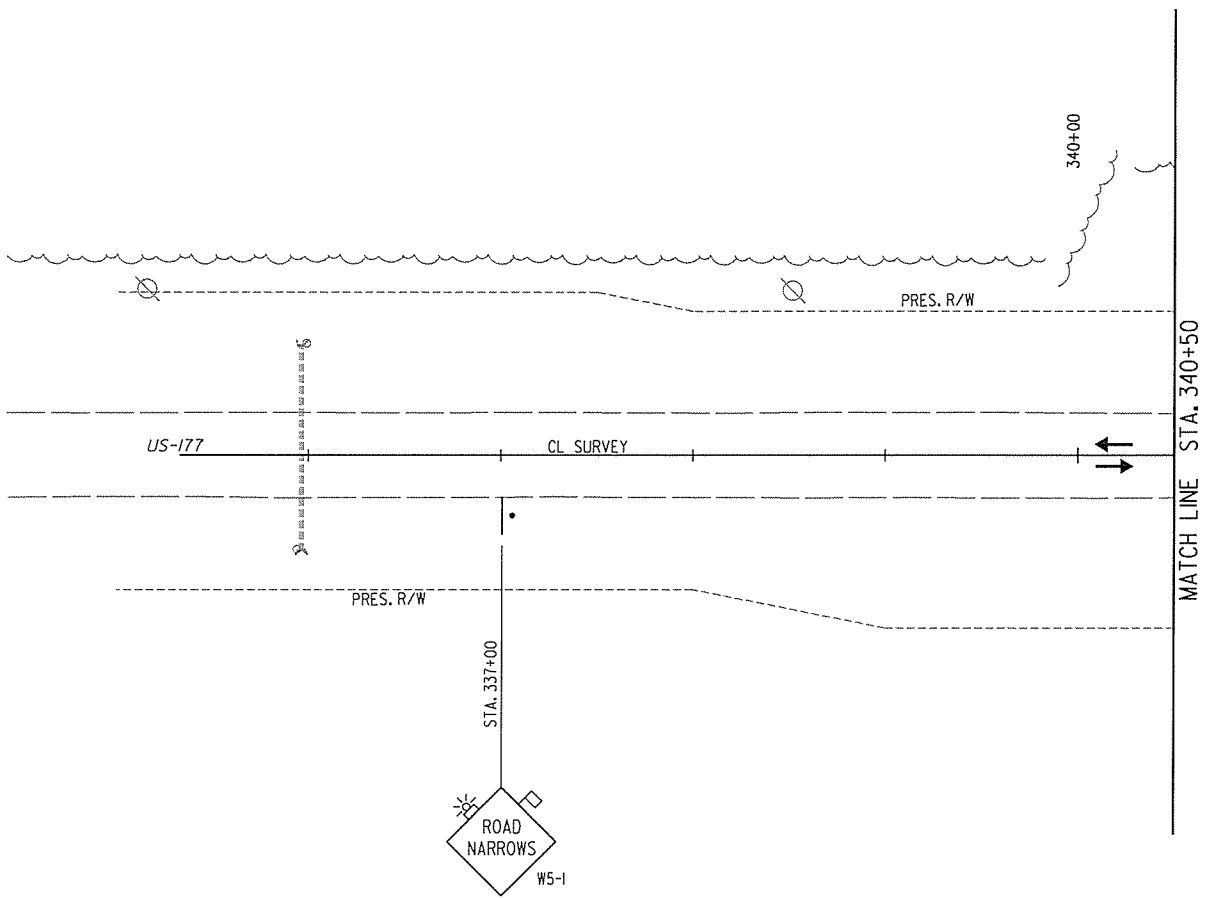
PHASE I CONSTRUCTION ACTIVITIES:

1. TRAFFIC IS RUNNING ON EXISTING HIGHWAY PAVEMENT.
 2. CONSTRUCT DETOUR, TEMPORARY DRIVEWAY, GRADING AND DRAINAGE FROM STA. 342+98.14 TO STA. 367+38.72
- ESTIMATED DURATION FOR PHASE I: 30 DAYS. ⚠

TRAFFIC CONTROL NOTES

- A. ALL TRAFFIC CONTROL SIGNS AND DEVICES AND THEIR USE SHALL CONFORM TO ODOT TRAFFIC CONTROL STANDARDS AND PART 6 (WORK ZONES) OF THE MANUAL ON UNIFORM TRAFFIC CONTROL DEVICES (MUTCD).
- B. THE HIGHWAY IS TO REMAIN OPEN TO TRAFFIC THROUGHOUT CONSTRUCTION.

SUMMARY OF TRAFFIC CONTROL (THIS SHEET)		
ITEM	(10.0 S.F.)	NO. REQ'D.
SIGN: RII-2	(10.0 S.F.)	3
SIGN: W5-1	(16.0 S.F.)	1
TYPE III BARRICADES		3
DRUMS		15
TYPE A LIGHTS		7



JOHN M. LAMB
24134
Oklahoma
07-19-2016
CA 5769 PE/LS
LAMB-STAR ENGINEERING, L.P.
5700 W. PLANO PARKWAY, SUITE 1000
PLANO, TX 75093
214-440-3600

US-177 (1 OF 2)

DESIGN	TWW
DRAWN	TWW
CHECKED	WLO
APPROVED	JML
SQUAD	L-S ENGR.

TRAFFIC CONTROL PLAN
PHASE I