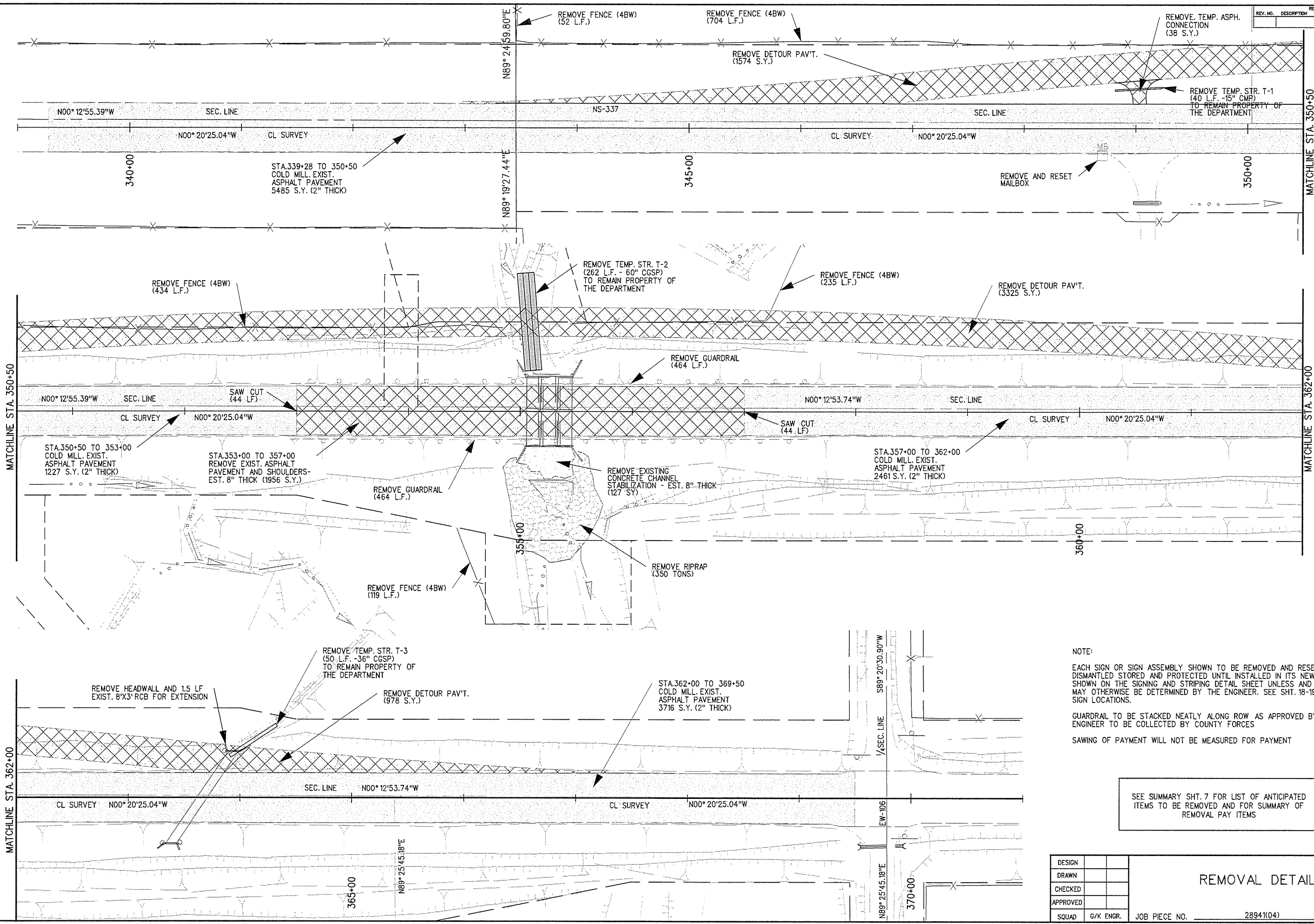


X:\odot\EC-1394F-2\Civil\Removals.dgn

12/8/2015

REV. NO.	DESCRIPTION	REVISIONS	DATE

SCALE: 1" = 40'



NOTE:
 EACH SIGN OR SIGN ASSEMBLY SHOWN TO BE REMOVED AND RESET SHALL BE DISMANTLED STORED AND PROTECTED UNTIL INSTALLED IN ITS NEW LOCATION SHOWN ON THE SIGNING AND STRIPING DETAIL SHEET UNLESS AND EXCEPT AS MAY OTHERWISE BE DETERMINED BY THE ENGINEER. SEE SHT. 18-19 FOR NEW SIGN LOCATIONS.
 GUARDRAIL TO BE STACKED NEATLY ALONG ROW AS APPROVED BY THE ENGINEER TO BE COLLECTED BY COUNTY FORCES
 SAWING OF PAYMENT WILL NOT BE MEASURED FOR PAYMENT

SEE SUMMARY SHT. 7 FOR LIST OF ANTICIPATED ITEMS TO BE REMOVED AND FOR SUMMARY OF REMOVAL PAY ITEMS

DESIGN			
DRAWN			
CHECKED			
APPROVED			
SQUAD	G/K ENGR.	JOB PIECE NO. 28941(04)	SHEET NO. 16

REMOVAL DETAILS