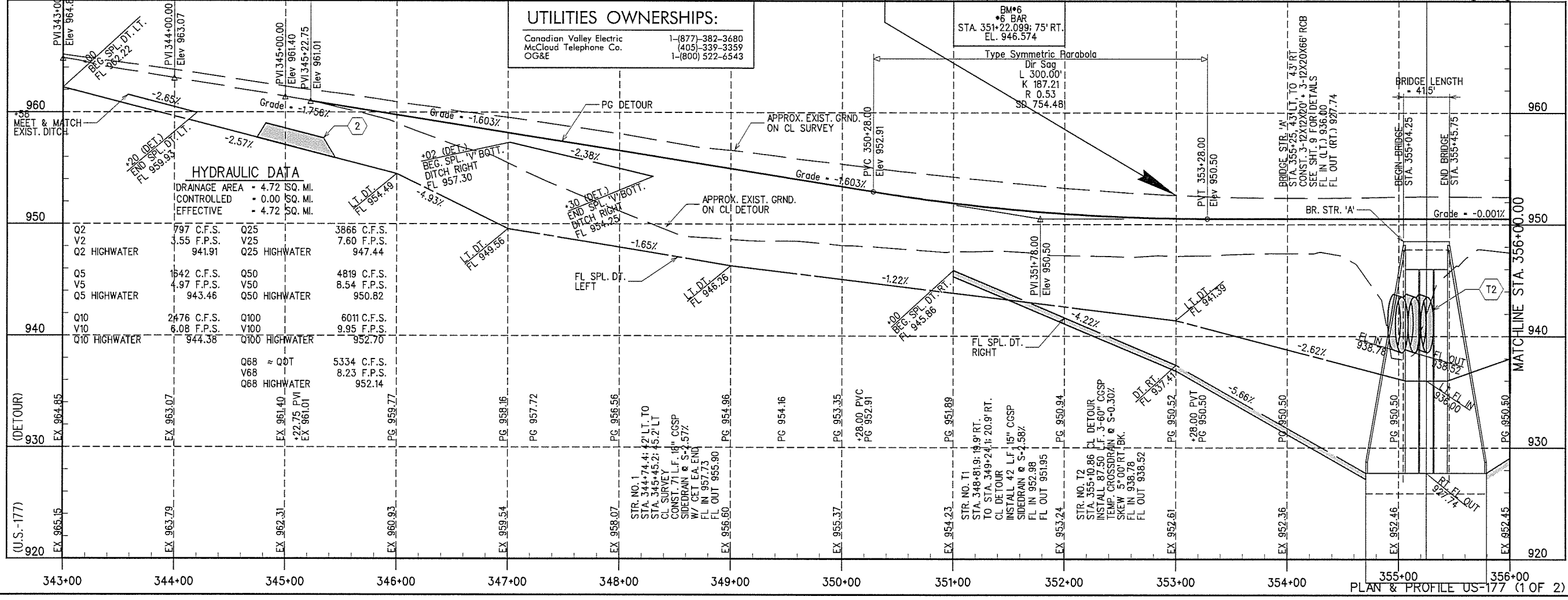


PROFILE GRADE ON EXISTING PAVEMENT



**HYDRAULIC DATA**

DRAINAGE AREA = 4.72 SQ. MI.  
 CONTROLLED = 0.00 SQ. MI.  
 EFFECTIVE = 4.72 SQ. MI.

Q2	797 C.F.S.	Q25	3866 C.F.S.
V2	1.55 F.P.S.	V25	7.60 F.P.S.
Q2 HIGHWATER	941.91	Q25 HIGHWATER	947.44
Q5	1642 C.F.S.	Q50	4819 C.F.S.
V5	4.97 F.P.S.	V50	8.54 F.P.S.
Q5 HIGHWATER	943.46	Q50 HIGHWATER	950.82
Q10	2476 C.F.S.	Q100	6011 C.F.S.
V10	6.08 F.P.S.	V100	9.95 F.P.S.
Q10 HIGHWATER	944.38	Q100 HIGHWATER	952.70
Q68	≈ Q0T	Q68	5334 C.F.S.
V68	≈ V0T	V68	8.23 F.P.S.
Q68 HIGHWATER		Q68 HIGHWATER	952.14

**UTILITIES OWNERSHIPS:**

Canadian Valley Electric 1-(877)-382-3680  
 McCloud Telephone Co. (405)-339-3359  
 OG&E 1-(800) 522-6543

**Type Symmetric Parabola**

Dir Sag  
 L 300.00'  
 K 187.21  
 R 0.53  
 SB 754.48

12/8/2015 X:\Odot\EC-1394F-2\Civil\P&P 1.dgn