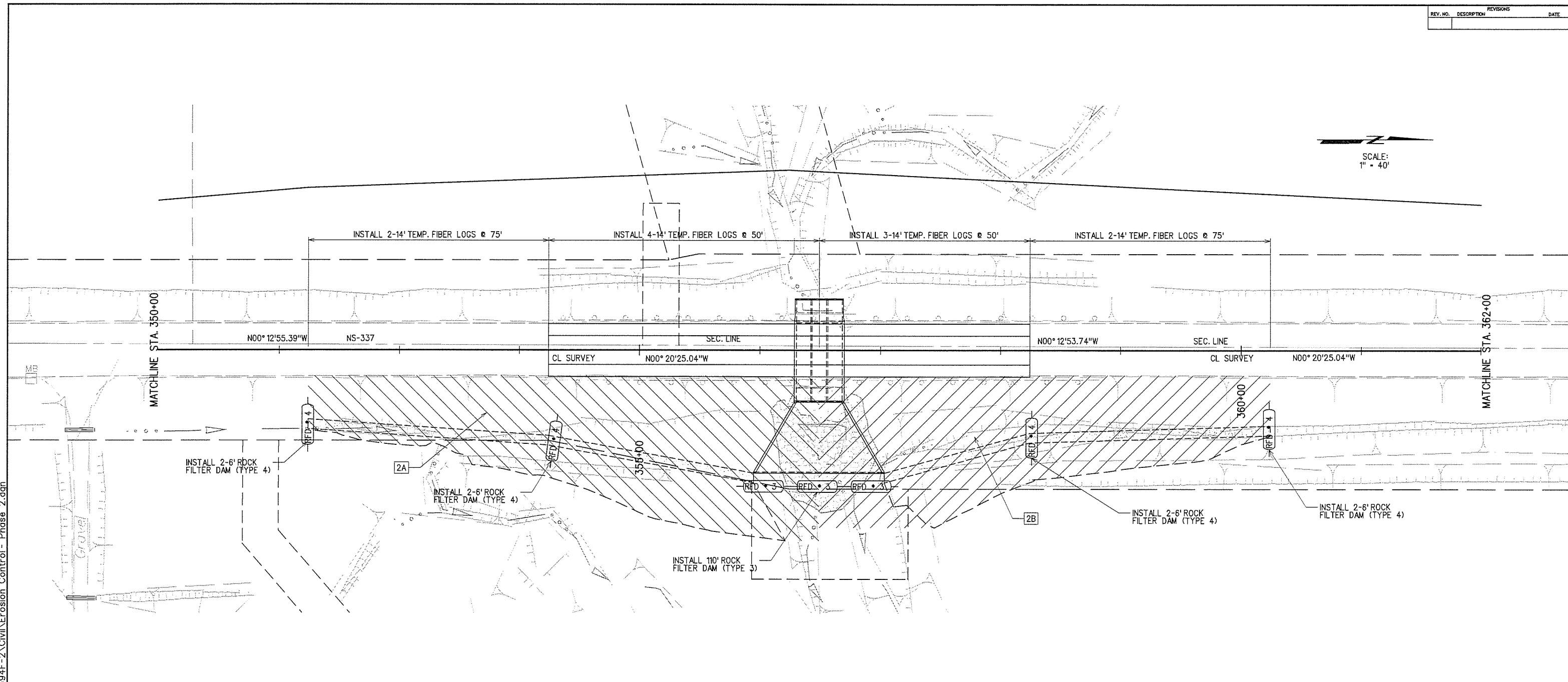
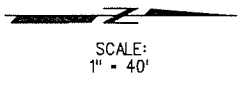


REV. NO.	DESCRIPTION	REVISIONS	DATE



X:\Odot\EC-1394F-2\Civil\Erosion Control - Phase 2.dgn 12/8/2015

**NOTE:**  
 THIS SHEET IS PROVIDED FOR GENERAL EROSION CONTROL INFORMATION ONLY AND FOR THE ESTABLISHMENT OF BID PAY ITEMS. IT SHOULD BE CONSIDERED AS A GUIDE ONLY FOR THE PURPOSE OF SETTING UP SPECIFICS OF THE REQUIRED EROSION CONTROL. ALL EROSION CONTROL SHALL BE IN ACCORDANCE WITH ALL APPLICABLE STATE AND FEDERAL REGULATIONS AND ODOT STANDARDS AND SPECIFICATIONS AND BE APPROVED, IN ADVANCE, BY THE ENGINEER.

**LEGEND**

- DENOTES ROCK FILTER DAM (SEE STD. TFRD-1)	SHEET FLOW
XXXXXXXXXX - DENOTES SILT FENCE (SEE STD. TSC2-3)	FLOW TO LEFT
	FLOW TO RIGHT

- ① INCLUDED IN THE PRICE BID FOR TEMPORARY EROSION CONTROL QUANTITIES SHALL BE THE COSTS FOR PERIODIC REMOVAL OF COLLECTED SEDIMENT AND THE RESTORATION OF ANY AREAS DAMAGED BY RAIN EVENTS AND/OR SEDIMENT.
- ② FIBER LOGS IN ACCORDANCE WITH THE STANDARD SPECIFICATIONS AND INSTALLED ACCORDING TO STD. TFL-1, MAY BE SUBSTITUTED FOR ANY OR ALL OF THE TEMPORARY SILT FENCE OR SILT DIKE UPON APPROVAL OF THE ENGINEER. FOR ESTIMATING PURPOSES, ONE THIRD OF THE SILT FENCE AND ONE THIRD OF THE SILT DIKE SHOWN ARE LISTED IN THE SUMMARIES AND THE PAY QUANTITIES AS FIBER LOG.

EROSION CONTROL QUANTITIES -- THIS SHEET ①		
ITEM	UNIT	AMOUNT
TEMPORARY FIBER LOG ②	L.F.	154
ROCK FILTER DAM (TYPE 3)	C.Y.	28.8
ROCK FILTER DAM (TYPE 4)	C.Y.	5.6

SUMMARY OF DISTURBED AREA - PHASE 2				
AREA	APPROX. LOCATION (CL SURVEY)	OUTFALL	AREA (ACRES)	DRAINAGE TREATMENT
2A	353+00 TO 357+00	BRUSH CREEK	0.90	STANDARD BMP
2B	353+00 TO 357+00	BRUSH CREEK	0.81	STANDARD BMP
TOTAL:			1.71	

PHASE 2

DESIGN	
DRAWN	
CHECKED	
APPROVED	
SQUAD	G/K ENGR.

## EROSION CONTROL DETAILS

JOB PIECE NO. 28941(04) SHEET NO. 11