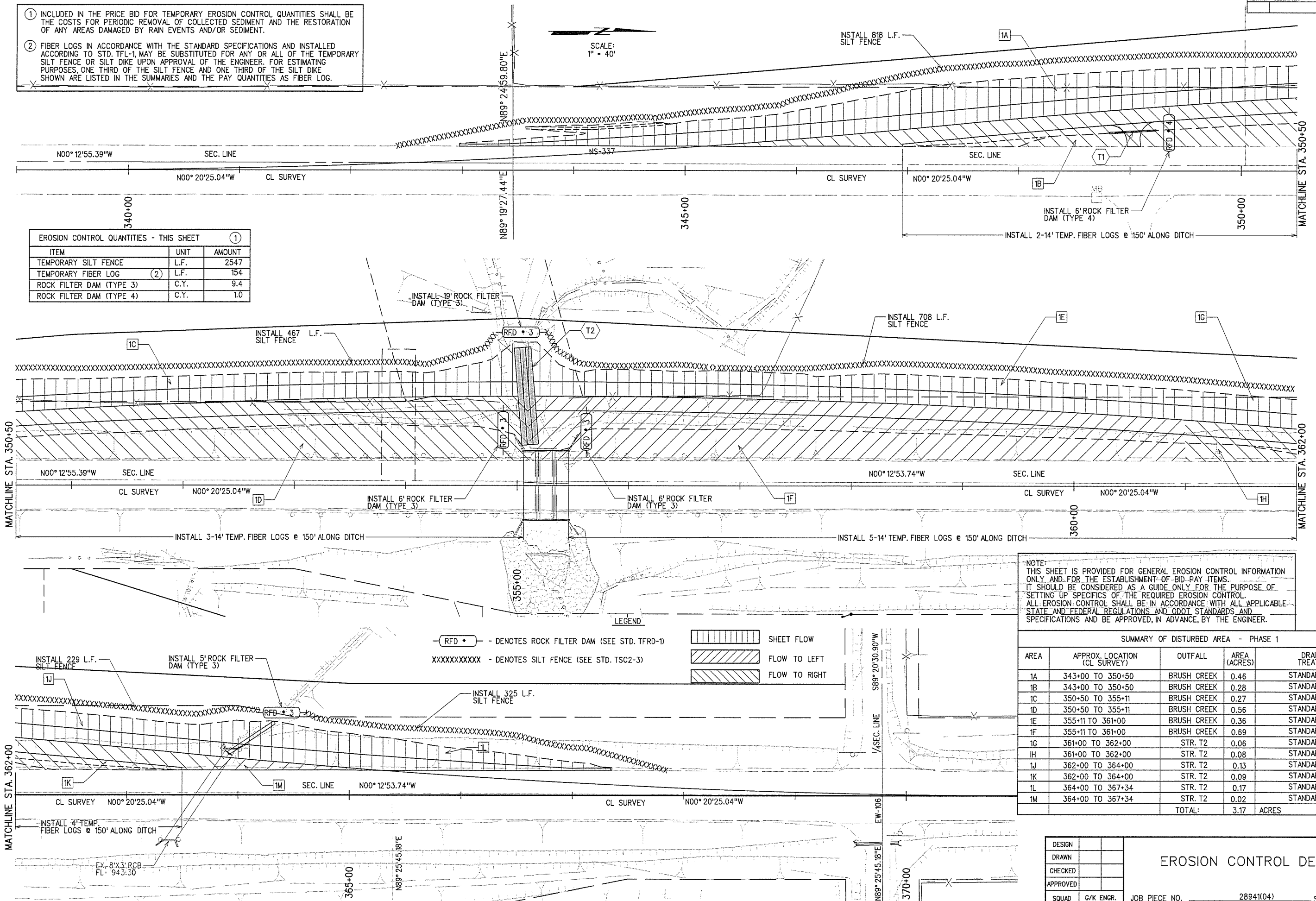


- ① INCLUDED IN THE PRICE BID FOR TEMPORARY EROSION CONTROL QUANTITIES SHALL BE THE COSTS FOR PERIODIC REMOVAL OF COLLECTED SEDIMENT AND THE RESTORATION OF ANY AREAS DAMAGED BY RAIN EVENTS AND/OR SEDIMENT.
- ② FIBER LOGS IN ACCORDANCE WITH THE STANDARD SPECIFICATIONS AND INSTALLED ACCORDING TO STD. TFL-1, MAY BE SUBSTITUTED FOR ANY OR ALL OF THE TEMPORARY SILT FENCE OR SILT DIKE UPON APPROVAL OF THE ENGINEER. FOR ESTIMATING PURPOSES, ONE THIRD OF THE SILT FENCE AND ONE THIRD OF THE SILT DIKE SHOWN ARE LISTED IN THE SUMMARIES AND THE PAY QUANTITIES AS FIBER LOG.

SCALE:
1" = 40'

EROSION CONTROL QUANTITIES - THIS SHEET ①		
ITEM	UNIT	AMOUNT
TEMPORARY SILT FENCE	L.F.	2547
TEMPORARY FIBER LOG ②	L.F.	154
ROCK FILTER DAM (TYPE 3)	C.Y.	9.4
ROCK FILTER DAM (TYPE 4)	C.Y.	1.0



NOTE:
THIS SHEET IS PROVIDED FOR GENERAL EROSION CONTROL INFORMATION ONLY AND FOR THE ESTABLISHMENT OF BID-PAY ITEMS. IT SHOULD BE CONSIDERED AS A GUIDE ONLY FOR THE PURPOSE OF SETTING UP SPECIFICS OF THE REQUIRED EROSION CONTROL. ALL EROSION CONTROL SHALL BE IN ACCORDANCE WITH ALL APPLICABLE STATE AND FEDERAL REGULATIONS AND ODOT STANDARDS AND SPECIFICATIONS AND BE APPROVED, IN ADVANCE, BY THE ENGINEER.

SUMMARY OF DISTURBED AREA - PHASE 1				
AREA	APPROX. LOCATION (CL SURVEY)	OUTFALL	AREA (ACRES)	DRAINAGE TREATMENT
1A	343+00 TO 350+50	BRUSH CREEK	0.46	STANDARD BMP
1B	343+00 TO 350+50	BRUSH CREEK	0.28	STANDARD BMP
1C	350+50 TO 355+11	BRUSH CREEK	0.27	STANDARD BMP
1D	350+50 TO 355+11	BRUSH CREEK	0.56	STANDARD BMP
1E	355+11 TO 361+00	BRUSH CREEK	0.36	STANDARD BMP
1F	355+11 TO 361+00	BRUSH CREEK	0.69	STANDARD BMP
1G	361+00 TO 362+00	STR. T2	0.06	STANDARD BMP
1H	361+00 TO 362+00	STR. T2	0.08	STANDARD BMP
1J	362+00 TO 364+00	STR. T2	0.13	STANDARD BMP
1K	362+00 TO 364+00	STR. T2	0.09	STANDARD BMP
1L	364+00 TO 367+34	STR. T2	0.17	STANDARD BMP
1M	364+00 TO 367+34	STR. T2	0.02	STANDARD BMP
TOTAL:			3.17	ACRES

LEGEND

- DENOTES ROCK FILTER DAM (SEE STD. TFRD-1)
- DENOTES SILT FENCE (SEE STD. TSC-3)
- SHEET FLOW
- FLOW TO LEFT
- FLOW TO RIGHT

DESIGN	
DRAWN	
CHECKED	
APPROVED	
SQUAD	G/K ENGR.

EROSION CONTROL DETAILS

12/8/2015 X:\odot\EC-1394F-2\Civil\Erosion Control - Phase 1.dgn