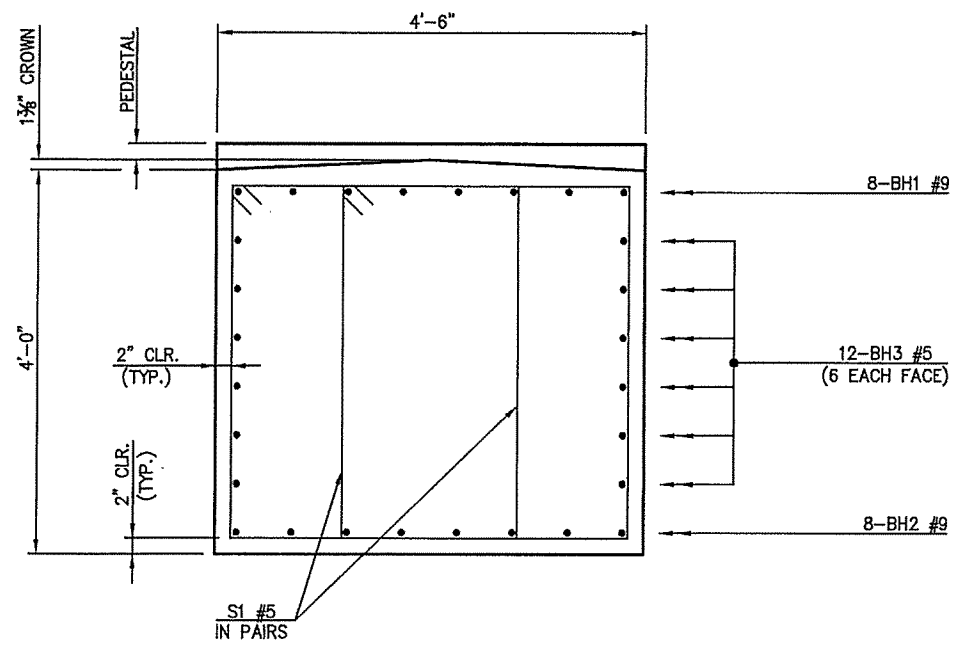
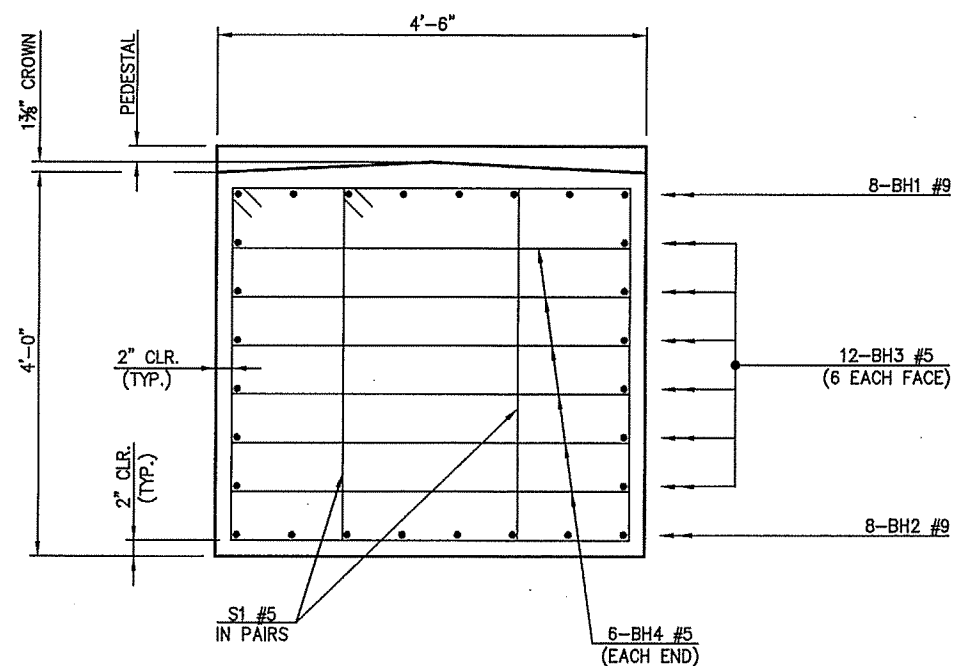


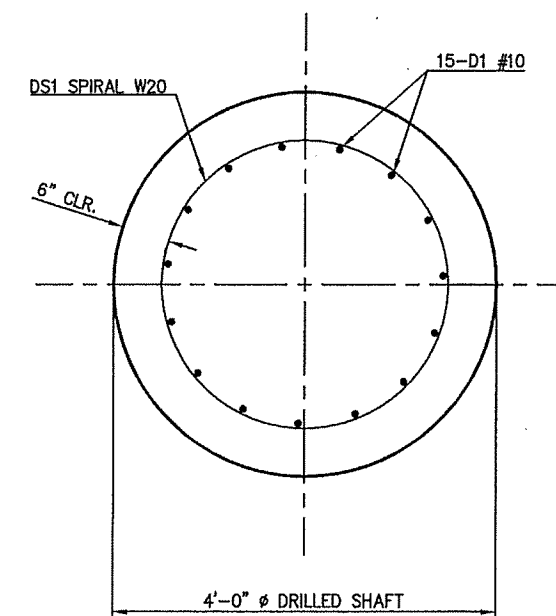
DESCRIPTION	REVISIONS	DATE



SECTION A-A



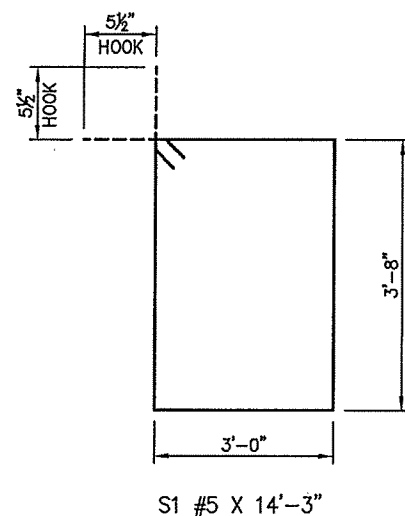
END SECTION



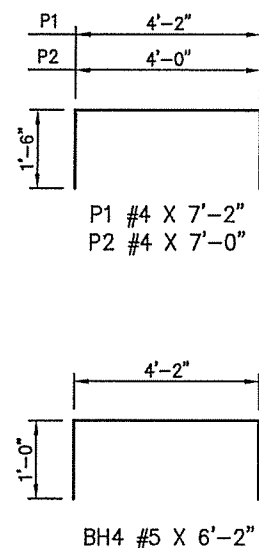
SECTION B-B

BAR LIST - PIER NO. 1				
MARK	SIZE	NO.	FORM	LENGTH
BH1	#9	8	BNT.	27'-6"
BH2	#9	8	STR.	25'-0"
BH3	#5	12	STR.	25'-0"
BH4	#5	12	BNT.	6'-2"
P1	#4	15	BNT.	7'-2"
P2	#4	15	BNT.	7'-0"
S1	#5	44	BNT.	14'-3"
TWO DRILLED SHAFTS ①				
D1	#10	28	STR.	26'-5"
DS1	W20	2	SPIRAL	454'-7"

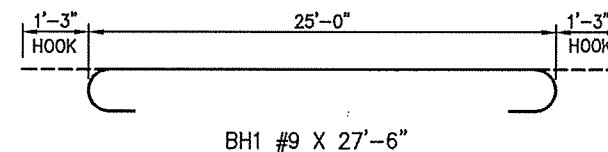
① INCLUDED IN PRICE BID PER LINEAR FOOT OF DRILLED SHAFT.



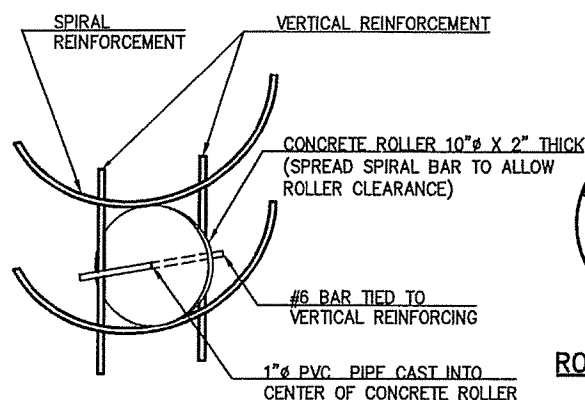
S1 #5 X 14'-3"



BH4 #5 X 6'-2"



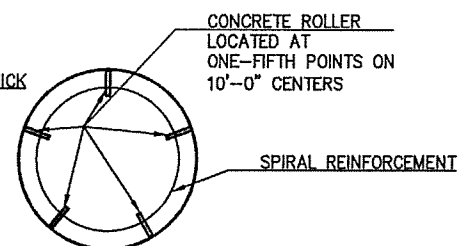
BH1 #9 X 27'-6"



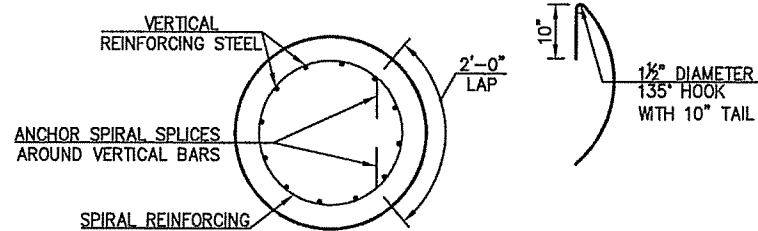
ROLLER INSTALLATION

DETAIL OF CONCRETE ROLLER

NOTE: CONCRETE USED IN THE CONCRETE ROLLERS SHALL HAVE A MINIMUM 28 DAY COMPRESSIVE STRENGTH OF 4,000 P.S.I. SLAB BOLSTERS, HIGH CHAIRS AND PLASTIC ROLLERS SHALL NOT BE SUBSTITUTED FOR THE CONCRETE ROLLERS.



ROLLER PLACEMENT



DETAIL OF SPIRAL REINFORCING SPLICE

NOTE: SPIRAL BARS SHALL CONFORM TO AASHTO M-32. SPIRAL BAR LENGTH DOES NOT INCLUDE LAP. IF LAP IS REQUIRED, THE LENGTH OF THE LAP SHALL BE AS SHOWN.



5-18-2016  
 GUY ENGINEERING SERVICES, INC.  
 Certificate of Authorization No. 1427  
 Renewal Date: June 30, 2018

E330 OVER WHITE WATER CREEK BRIDGE "A"	DELAWARE COUNTY	Design	MBS	05/16
BRIDGE PIER DETAILS (SHEET NO. 2 OF 2)		Detail	MZV	05/16
		Check	MBS	05/16
		Squad Egr.		
STATE OF OKLAHOMA	GUY ENGINEERING SERVICES, INC.	JOB PRICE NO. 32598(04)	SHEET NO. 10	