

FED. ROAD DIST. NO.	STATE	PROJ. NO.	FISCAL YEAR	SHEET NO.	TOTAL SHEETS

REVISIONS		DATE
DESCRIPTION		

DESIGN DATA

CLASS AA CONCRETE $f'c = 4$ K.S.I.
 REINFORCING STEEL (GRADE 60) $F_y = 60$ K.S.I.

LOADING:
 HL-93 OR OKLAHOMA OVERLOAD TRUCK

DESIGN:
 AASHTO LRFD BRIDGE DESIGN SPECIFICATIONS, 7TH EDITION.

INDEX OF STR. NO. 7 SHEETS

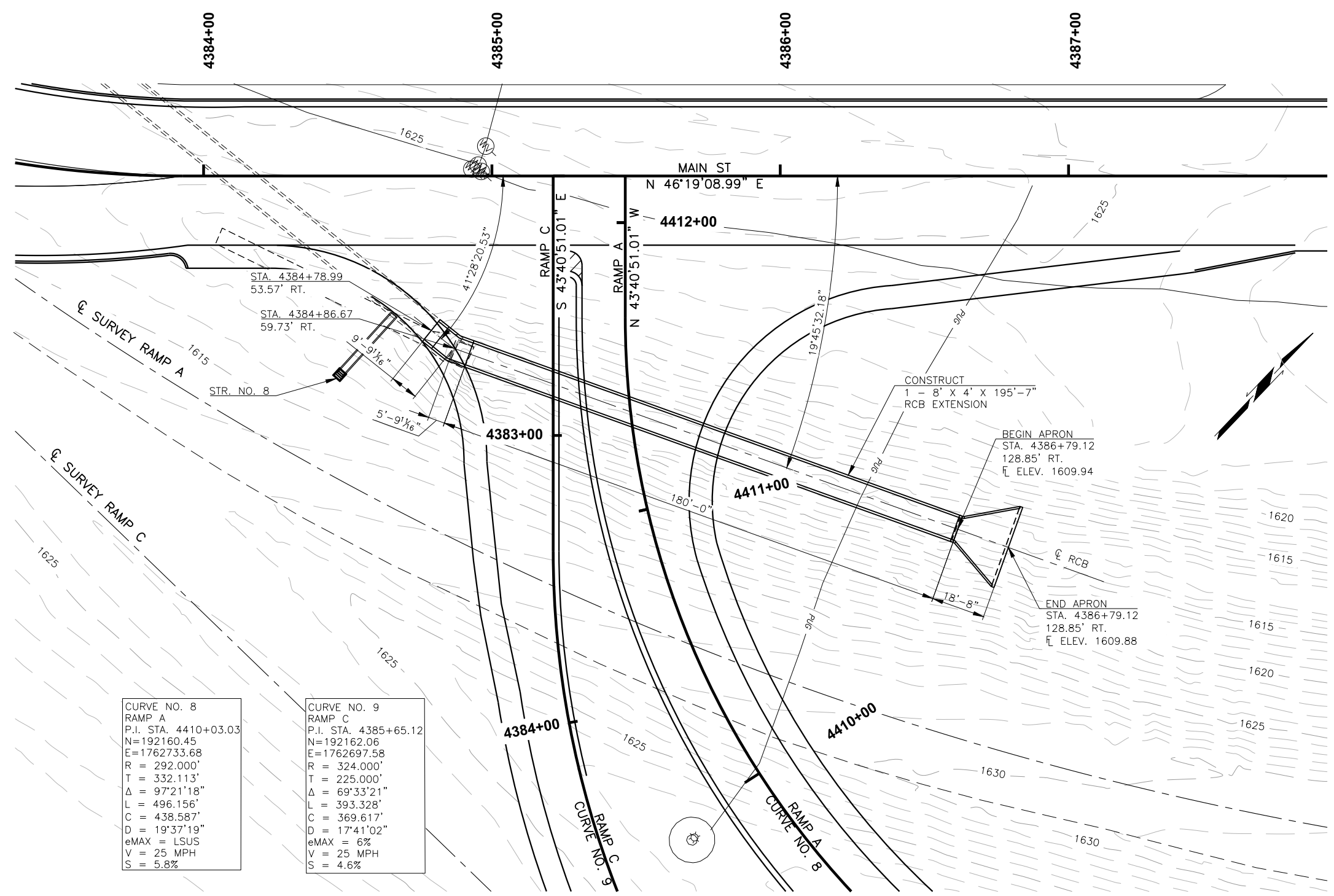
- 84. STR. NO. 7 GENERAL NOTES AND PAY ITEMS
- 87. GENERAL PLAN AND ELEVATION
- 88. RCB DETAILS

BRIDGE STANDARDS

- RCB-C1-8(14-20)-01E
- RCB-E1-H4-0-1-01E
- RCB-E1-H4-0-2-01E
- RCB-CW1-D4-0-01E

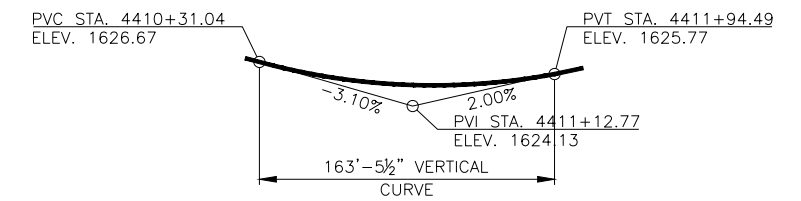
ROADWAY STANDARDS

- SBI-4-2

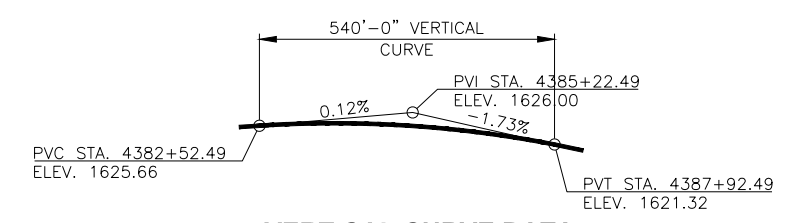


CURVE NO. 8
 RAMP A
 P.I. STA. 4410+03.03
 N=192160.45
 E=1762733.68
 R = 292.000'
 T = 332.113'
 $\Delta = 97^{\circ}21'18''$
 L = 496.156'
 C = 438.587'
 D = 19'37'19"
 eMAX = LSUS
 V = 25 MPH
 S = 5.8%

CURVE NO. 9
 RAMP C
 P.I. STA. 4385+65.12
 N=192162.06
 E=1762697.58
 R = 324.000'
 T = 225.000'
 $\Delta = 69^{\circ}33'21''$
 L = 393.328'
 C = 369.617'
 D = 17'41'02"
 eMAX = 6%
 V = 25 MPH
 S = 4.6%



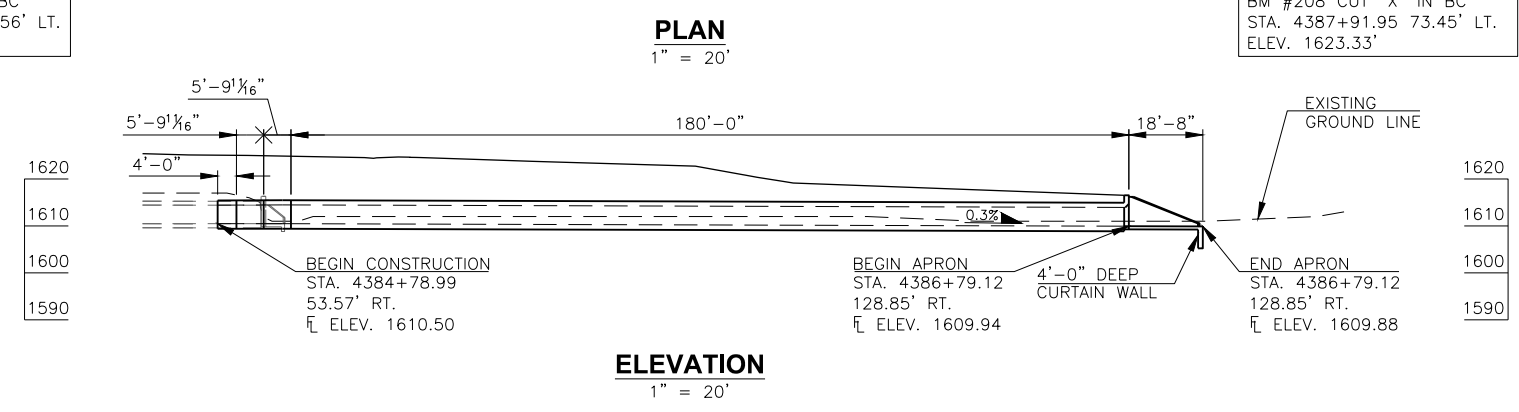
VERTICAL CURVE DATA
 P.G.L. RAMP A



VERTICAL CURVE DATA
 P.G.L. RAMP C

BM #207 CUT "X" IN BC
 STA. 4382+84.13 321.56' LT.
 ELEV. 1624.45'

BM #208 CUT "X" IN BC
 STA. 4387+91.95 73.45' LT.
 ELEV. 1623.33'



PLAN
 1" = 20'

ELEVATION
 1" = 20'

SUMMARY OF PAY QUANTITIES

ITEM	UNIT	RCB BARREL BEND	STANDARD RCB BARREL	END SECTION	CURTAIN WALL	TOTAL
UNCLASSIFIED EXCAVATION	C.Y.	115	1,060			1,175
STRUCTURAL EXCAVATION UNCLASSIFIED	C.Y.	5	80			85
CLASS AA CONCRETE	C.Y.	11.5	182.2	15.5	4.4	213.6
REINFORCING STEEL	L.B.	2,280	26,830	2,330	550	31,990

THIS DRAWING IS PRELIMINARY IN NATURE. IT IS NOT A FINAL SIGNED AND SEALED DRAWING

DESIGN	B.J.K.	MAIN ST. BRIDGE A	CUSTER COUNTY
DRAWN	R.A.P.	GENERAL PLAN AND ELEVATION 1 - 8' X 4' X 195'-7" RCB EXTENSION, VARYING SKEW	
CHECKED	B.J.K.		
APPROV.	T.A.C.		
SQUAD	CEC		
		JOB PIECE NO. 27911(06)	SHEET NO. 87