

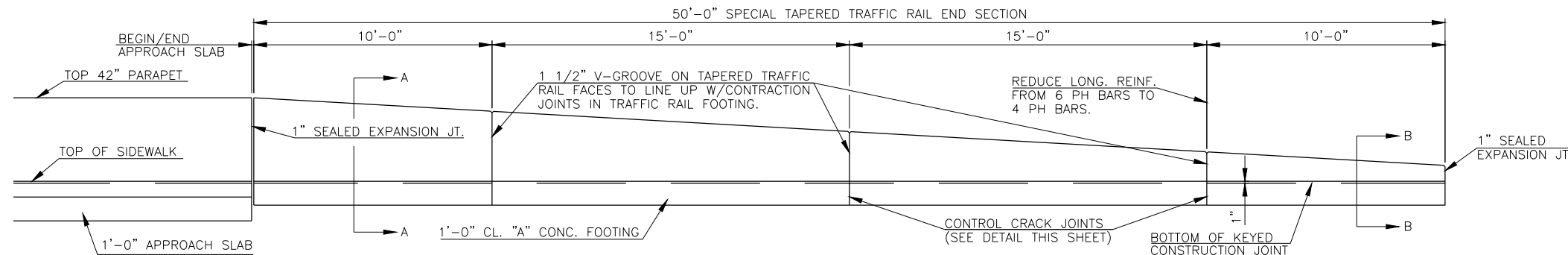
| QUANTITIES                     |      |        |
|--------------------------------|------|--------|
| ITEM                           | UNIT | TOTAL  |
| CONCRETE PARAPET               | L.F. | 450.0  |
| CLASS "A" CONCRETE             | C.Y. | 20.0   |
| REINFORCING STEEL (GR. 60)     | LB.  | 3072.0 |
| WATER REPELLENT SURFACE TREAT. | SY   | 150.0  |

CLASS "A" CONCRETE FOOTING IS PAID FOR BY CUBIC YARD OF CLASS "A" CONCRETE AND POUNDS OF REINFORCING STEEL. ALL REINFORCING STEEL SHALL BE GRADE 60. ALL COST OF SAWING AND OTHER INCIDENTALS NECESSARY TO COMPLETE THE WORK AS SPECIFIED TO BE INCLUDED IN OTHER ITEMS. THE TOP OF TRAFFIC RAIL FOOTING SHALL CONFORM TO SLOPE OF ROADWAY PAVEMENT. PAYMENT FOR THIS ITEM IS INCLUDED WITH BRIDGE PAY

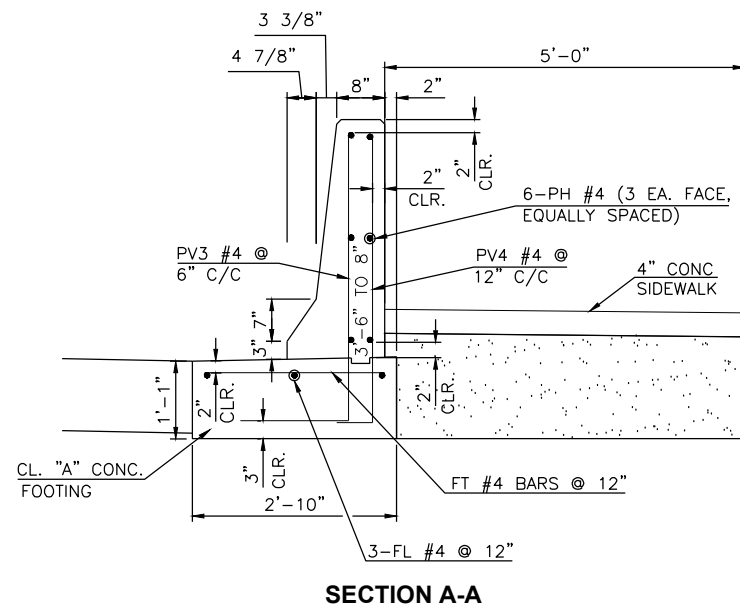
SPECIAL TAPERED TRAFFIC RAIL END SECTION IS PAID FOR AS LINEAR FOOT OF 42" PARAPET WALL. THE CONSTRUCTION OF THE 1 1/2" "V" GROOVE AND ALL LABOR, SAWING MATERIALS, AND INCIDENTALS NECESSARY TO COMPLETE THE WORK SHALL BE INCLUDED IN PRICE BID FOR 42" PARAPET WALL. ALL REINFORCING STEEL TO BE GRADE 60. PAYMENT FOR THIS ITEM IS INCLUDED WITH BRIDGE PAY QUANTITIES.

GENERAL NOTES: PENETRATING WATER REPELLENT SURFACE TREATMENT SHALL BE APPLIED TO FRONT FACE AND TOP OF CONCRETE TRAFFIC RAILS. PAYMENT FOR THIS ITEM INCLUDED WITH BRIDGE PAY QUANTITIES. COST OF SAND CUSHION INCLUDED IN OTHER ITEMS.

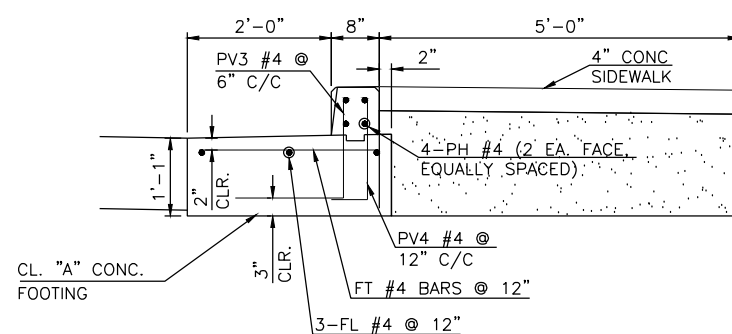
A CONTROL CRACK JOINT AS SHOWN BY THE DETAIL SHALL BE PLACED IN THE PARAPET @ 15' CTRS. (BEGINNING 5' MIN. AND 15' MAX. FROM ABUTMENT). PARAPETS WITH DRAIN OPENINGS SHALL HAVE A CONTROL CRACK JOINT SPACED IN THE CENTER OF THE SOLID PARAPET BETWEEN THE DRAIN OPENINGS.



**ELEVATION**  
(TAPERED TRAFFIC RAIL ON FOOTING AND APPROACH SLAB)



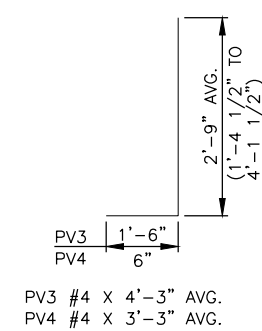
**SECTION A-A**



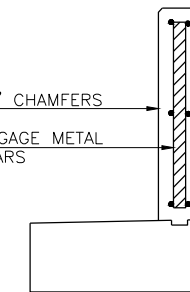
**SECTION B-B**

NOTE:  
PH BARS SHALL BE CONTINUOUS THROUGH CONTROL CRACK JOINTS.

NOTE:  
PV BARS ARE INCLUDED IN THE QUANTITY FOR REINFORCING STEEL GR. 60.



DOUBLE 3/4" CHAMFERS  
GALV. LIGHT GAGE METAL INSIDE PH BARS



**CONTROL CRACK JT.**

| BAR LIST          |      |     |       |                |
|-------------------|------|-----|-------|----------------|
| PLAIN REINFORCING |      |     |       |                |
| MARK              | SIZE | NO. | SHAPE | LENGTH         |
| FT                | #4   | 204 | STR   | 2'-4"          |
| FL                | #4   | 12  | STR   | 49'-8"         |
| PH1               | #4   | 24  | STR   | 42'-0"         |
| PH2               | #4   | 16  | STR   | 12'-0"         |
| PV3               | #4   | 400 | BNT   | 4'-3 1/2" AVG. |
| PV4               | #4   | 204 | BNT   | 3'-3 1/2" AVG. |

MAIN ST. CUSTER COUNTY

**SPECIAL TAPERED CONC. PARAPET END SECTION**

JOB PIECE NO. 27911(06) SHEET NO. 85