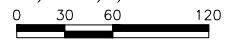
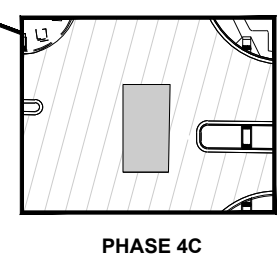
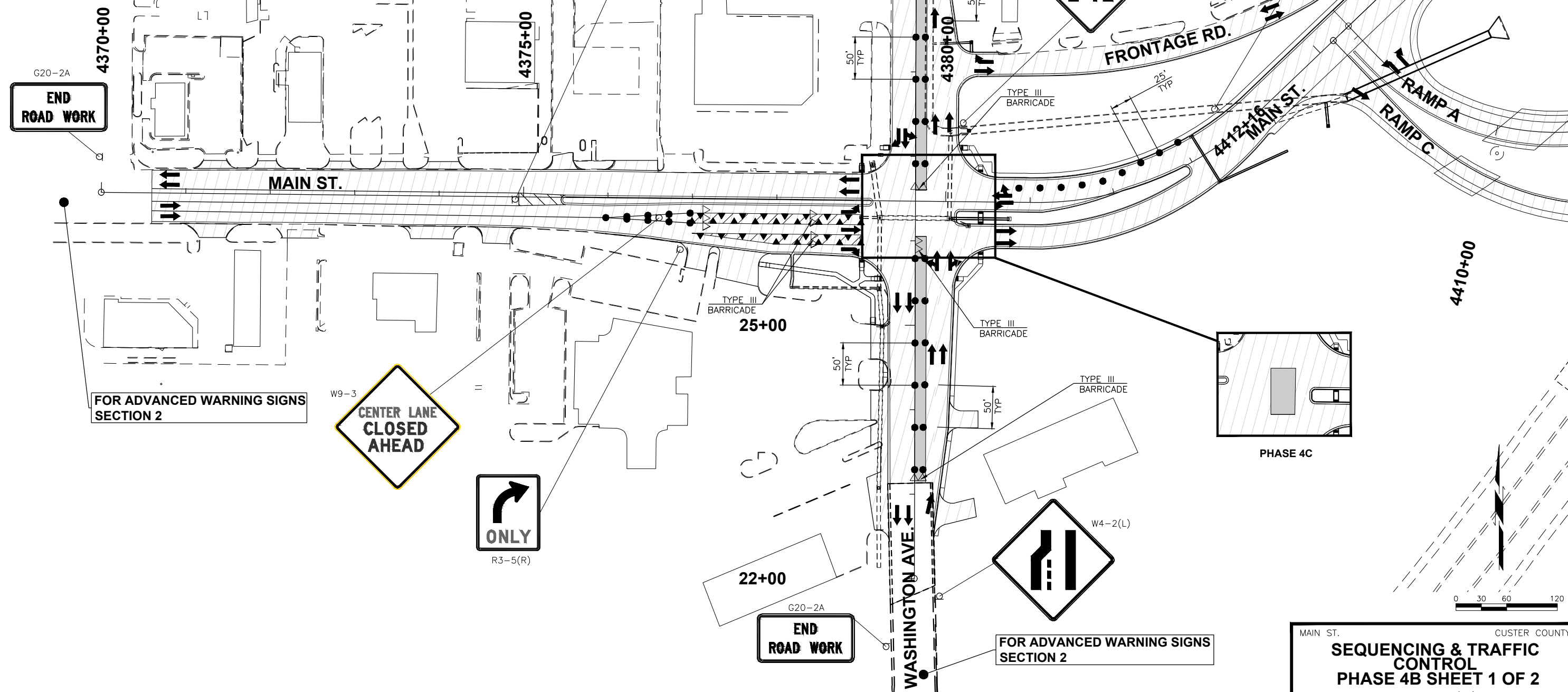


7/29/2016 12:08:52 PM N:\OKC\_TRANSPORTATION\HIGHWAY\PRODUCTION\0001\10019.04 - WEATHERFORD - I-49\_RAMP\_PHASE\_2\PROJECT\_DRAWINGS\TRAFFIC\_CONTROL\10019.04 - PHASE\_4B\_BASEMAP.PWG

LEGEND	
▲ CHANNELIZING CONE	☒ REMOVE THIS PHASE
● DRUMS	1 4" SOLID DOUBLE YELLOW (PAINT)
△△△ TYPE III BARRICADES	2 4" SOLID WHITE (PAINT)
◁ PROPOSED TEMPORARY SIGN	3 FLEX TABS (YELLOW)
→ FLOW OF TRAFFIC	4 FLEX TABS (WHITE)
▨ CONST. THIS PHASE	◻ PORTABLE TRAFFIC SIGNAL SYSTEM
▨ PREV. CONST. PHASE	

FOR ADVANCED WARNING SIGNS SECTION 2



MAIN ST. CUSTER COUNTY  
**SEQUENCING & TRAFFIC CONTROL**  
**PHASE 4B SHEET 1 OF 2**  
 JOB PIECE NO. 27911(06) SHEET NO. 70