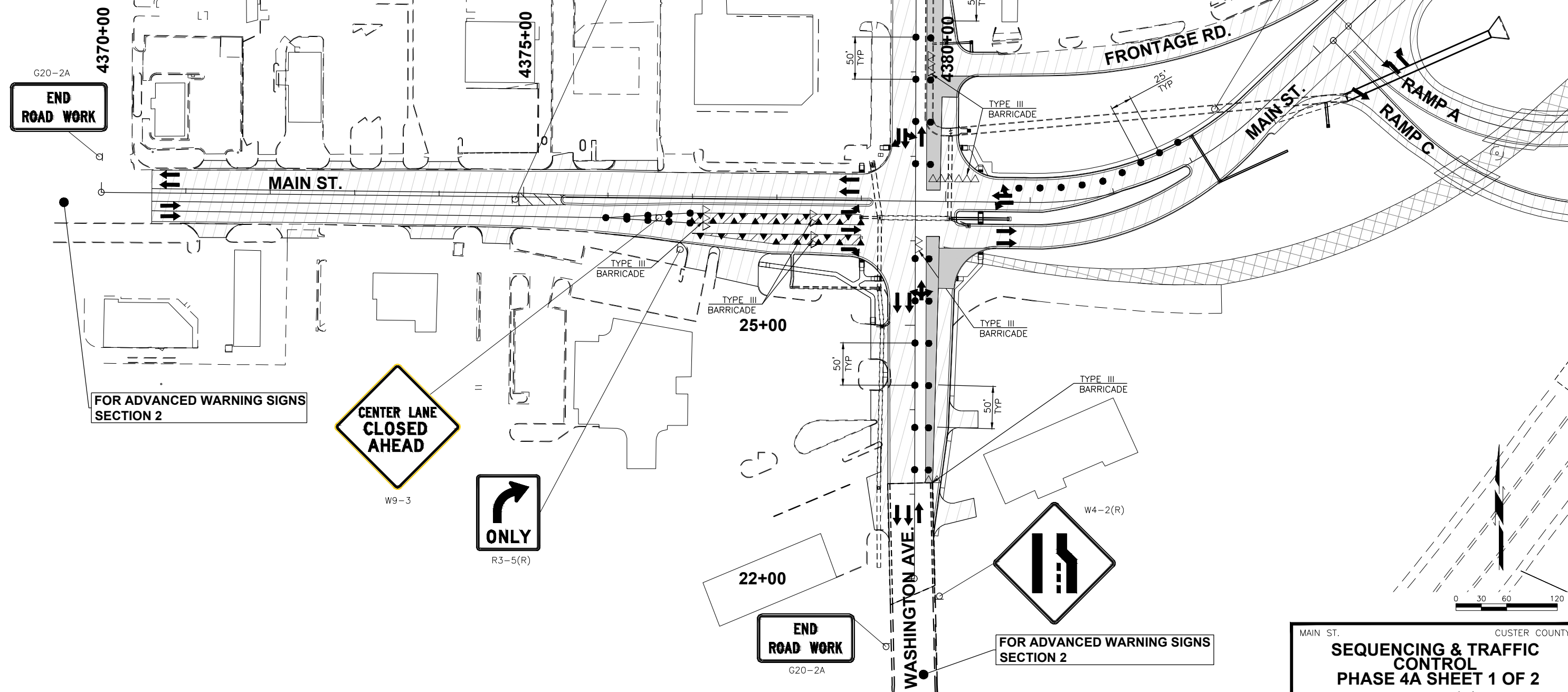


7/29/2016 12:09:22 PM N:\OKC\TRANSPORTATION\HIGHWAY\PRODUCTION\0001\10019.04 - WEATHERFORD - I-49\_RAMP\_PHASE\_2\PROJECT\_DRAWINGS\TRAFFIC\_CONTROL\10019.04 - PHASE\_4A\_BASEMAP.DWG

LEGEND	
▲ CHANNELIZING CONE	☒ REMOVE THIS PHASE
● DRUMS	1 4" SOLID DOUBLE YELLOW (PAINT)
△△△ TYPE III BARRICADES	2 4" SOLID WHITE (PAINT)
⤴ PROPOSED TEMPORARY SIGN	3 FLEX TABS (YELLOW)
→ FLOW OF TRAFFIC	4 FLEX TABS (WHITE)
▨ CONST. THIS PHASE	🚦 PORTABLE TRAFFIC SIGNAL SYSTEM
▨ PREV. CONST. PHASE	

FOR ADVANCED WARNING SIGNS SECTION 2



W4-2(R)

R3-5(L)

G20-2A

G20-2A



END ROAD WORK

END ROAD WORK

FOR ADVANCED WARNING SIGNS SECTION 2



W9-3

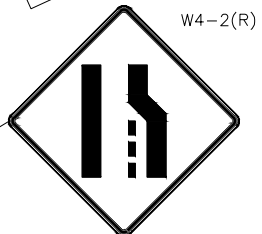


R3-5(R)

22+00

END ROAD WORK

G20-2A



W4-2(R)

FOR ADVANCED WARNING SIGNS SECTION 2

0 30 60 120

MAIN ST. CUSTER COUNTY

SEQUENCING & TRAFFIC CONTROL  
PHASE 4A SHEET 1 OF 2

JOB PIECE NO. 27911(06) SHEET NO. 68