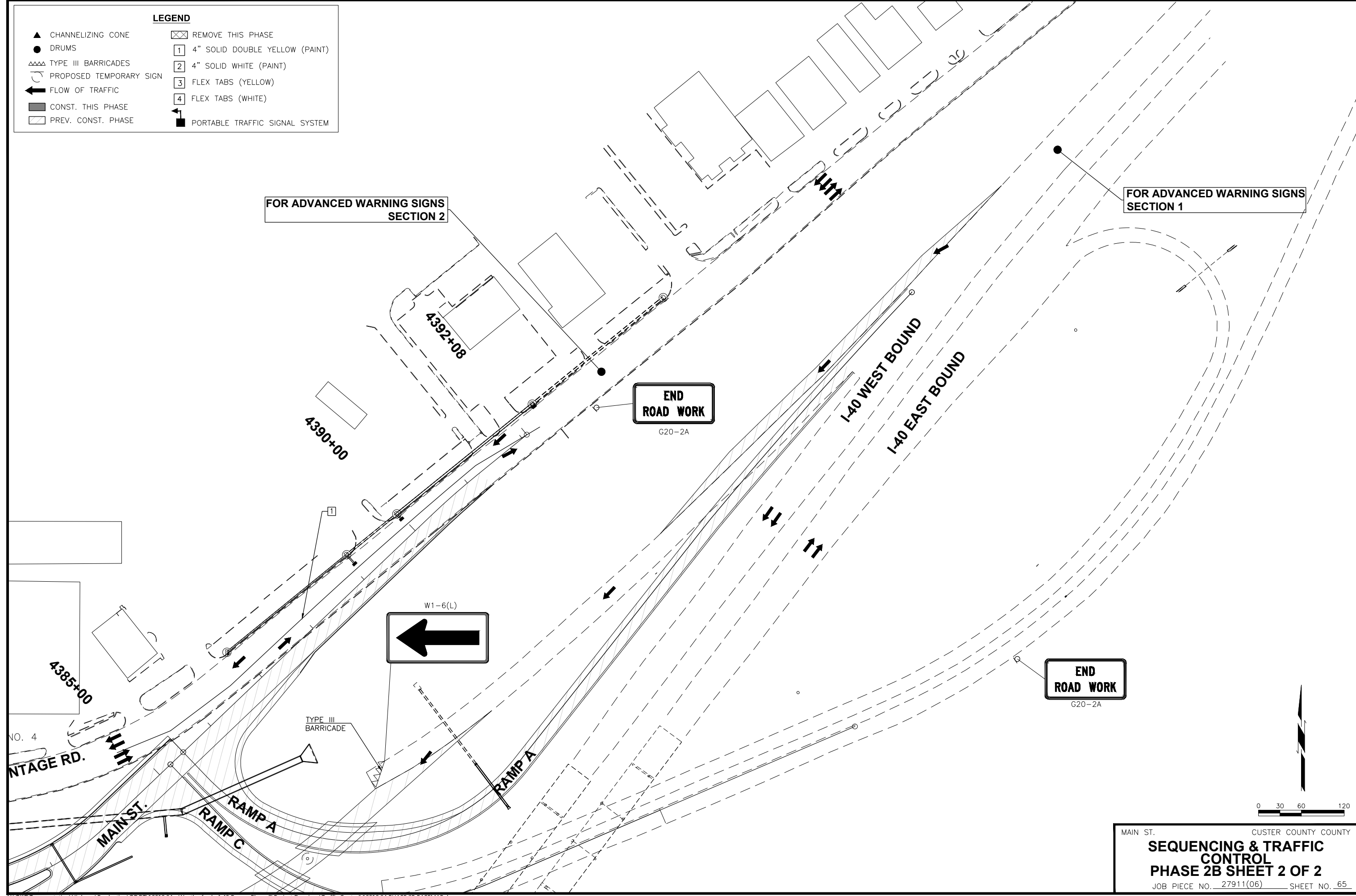


LEGEND	
▲ CHANNELIZING CONE	☒ REMOVE THIS PHASE
● DRUMS	1 4" SOLID DOUBLE YELLOW (PAINT)
≡≡≡ TYPE III BARRICADES	2 4" SOLID WHITE (PAINT)
⤴ PROPOSED TEMPORARY SIGN	3 FLEX TABS (YELLOW)
← FLOW OF TRAFFIC	4 FLEX TABS (WHITE)
▨ CONST. THIS PHASE	⬛ PORTABLE TRAFFIC SIGNAL SYSTEM
▨ PREV. CONST. PHASE	



FOR ADVANCED WARNING SIGNS  
SECTION 2

FOR ADVANCED WARNING SIGNS  
SECTION 1

END  
ROAD WORK  
G20-2A

END  
ROAD WORK  
G20-2A

W1-6(L)  
←

0 30 60 120

MAIN ST. CUSTER COUNTY COUNTY  
**SEQUENCING & TRAFFIC CONTROL**  
**PHASE 2B SHEET 2 OF 2**  
 JOB PIECE NO. 27911(06) SHEET NO. 65