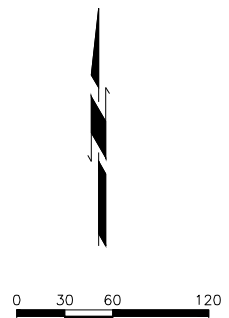
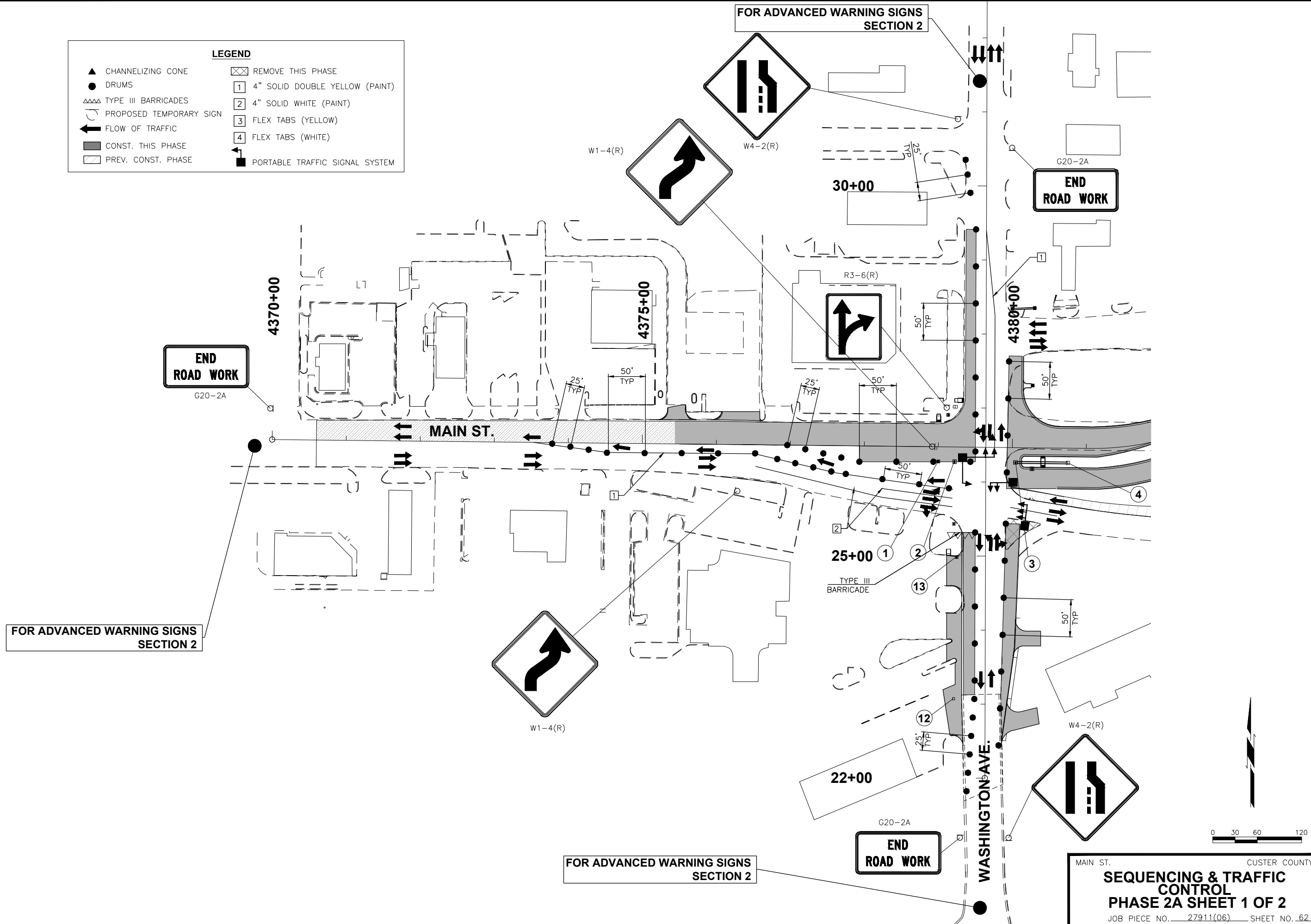


7/29/2016 12:07:53 PM N:\OKC_TRANSPORTATION\HIGHWAY\PRODUCTION\0001\10019.04 - WEATHERFORD - I-40_RAMP_PHASE_2\PROJECT_DRAWINGS\TRAFFIC_CONTROL\10019.04 - PHASE_2A_BASEMAP.DWG

LEGEND	
▲ CHANNELIZING CONE	☒ REMOVE THIS PHASE
● DRUMS	1 4" SOLID DOUBLE YELLOW (PAINT)
△△△ TYPE III BARRICADES	2 4" SOLID WHITE (PAINT)
⤴ PROPOSED TEMPORARY SIGN	3 FLEX TABS (YELLOW)
← FLOW OF TRAFFIC	4 FLEX TABS (WHITE)
▒ CONST. THIS PHASE	⬇ PORTABLE TRAFFIC SIGNAL SYSTEM
▨ PREV. CONST. PHASE	



MAIN ST. CUSTER COUNTY
SEQUENCING & TRAFFIC CONTROL
PHASE 2A SHEET 1 OF 2
 JOB PIECE NO. 27911(06) SHEET NO. 62