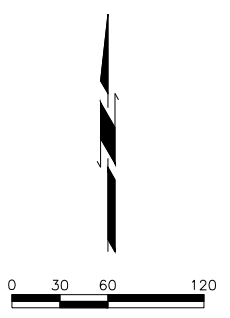
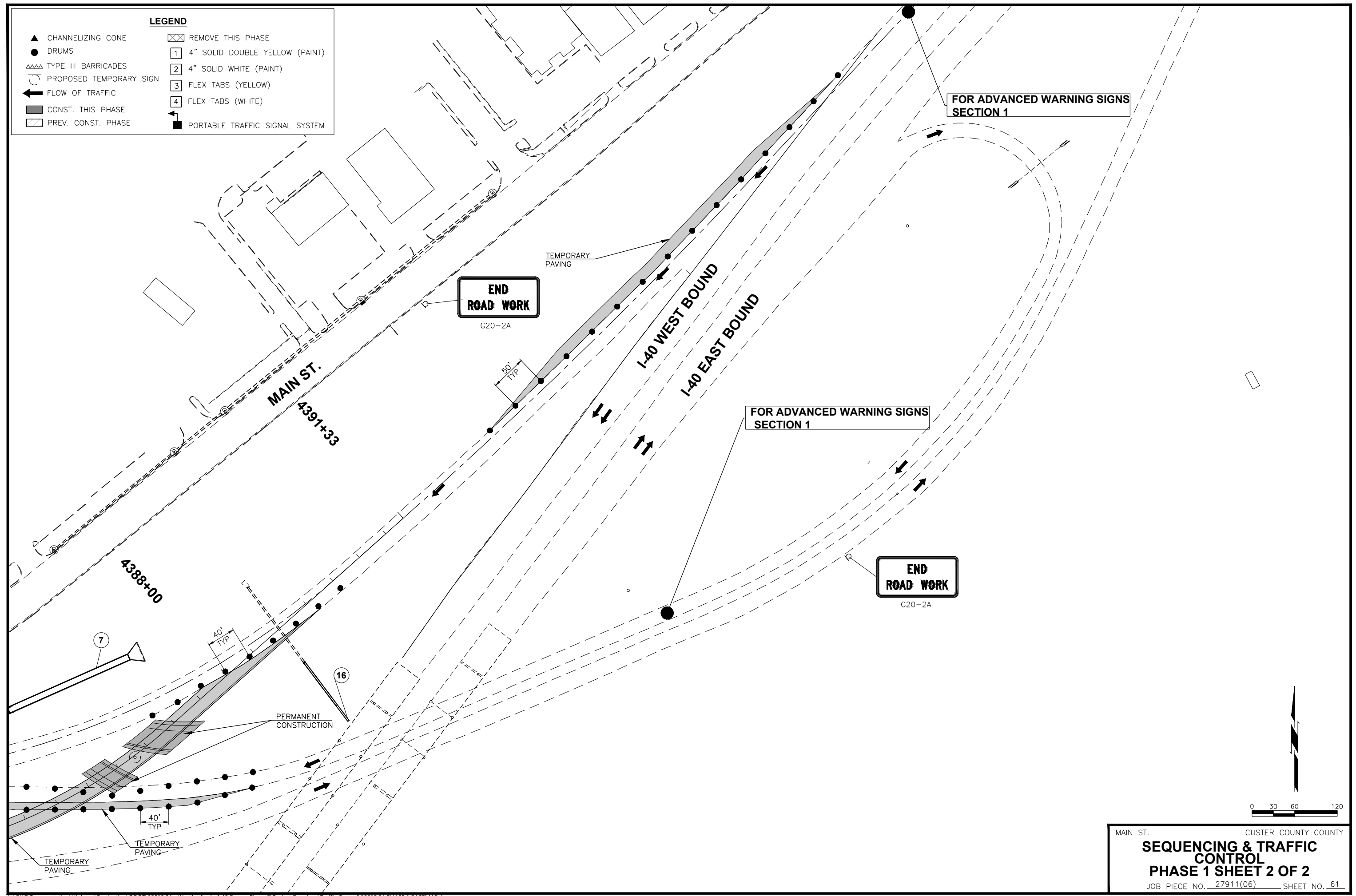


LEGEND	
▲ CHANNELIZING CONE	☒ REMOVE THIS PHASE
● DRUMS	1 4" SOLID DOUBLE YELLOW (PAINT)
≡≡≡ TYPE III BARRICADES	2 4" SOLID WHITE (PAINT)
⤴ PROPOSED TEMPORARY SIGN	3 FLEX TABS (YELLOW)
← FLOW OF TRAFFIC	4 FLEX TABS (WHITE)
▨ CONST. THIS PHASE	⬛ PORTABLE TRAFFIC SIGNAL SYSTEM
▨ PREV. CONST. PHASE	



MAIN ST. CUSTER COUNTY COUNTY
SEQUENCING & TRAFFIC CONTROL
PHASE 1 SHEET 2 OF 2
 JOB PIECE NO. 27911(06) SHEET NO. 61