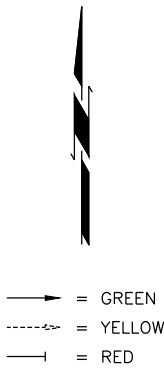
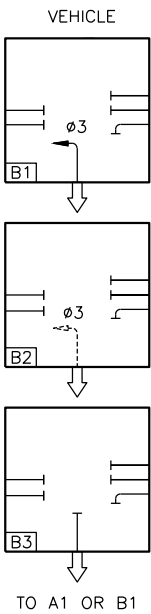
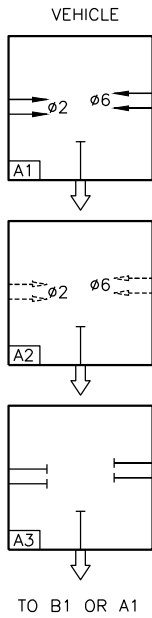


7/8/2016 12:06:53 PM N:\CWA\TRANSPORTATION\HIGHWAY\PRODUCTION\DOT\10019.04 - WEATHERFORD - I-40 RAMPs PHASE 2\PROJECT DRAWINGS\SCMA\PHASE DIAGRAMS.CWG

PHASING DIAGRAM	
PHASE "A"	PHASE "B"
MAIN STREET	I-40 RAMPS

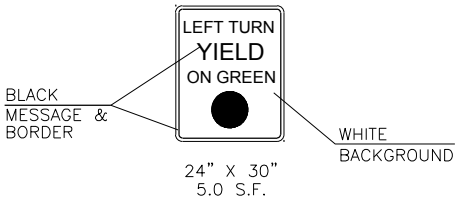


SEQUENCE CHART				
DIRECTION	BLOCK No.	PHASE		
		3	2	6
		SIGNAL	HEAD NO.	
		5,6	1,2	3,4
ø2 & ø6 R.O.W.	A1	←R→	G	G
ø2 & ø6 CL.	A2	←R→	Y	Y
ALL RED	A3	←R→	R	R
ø8 R.O.W.	B1	←G→	R	R
ø8 CL.	B2	←Y→	R	R
ALL RED	B3	←R→	R	R
FLASHING OPERATION	⊗	FR	FR	FR

G = GREEN  
Y = YELLOW  
R = RED

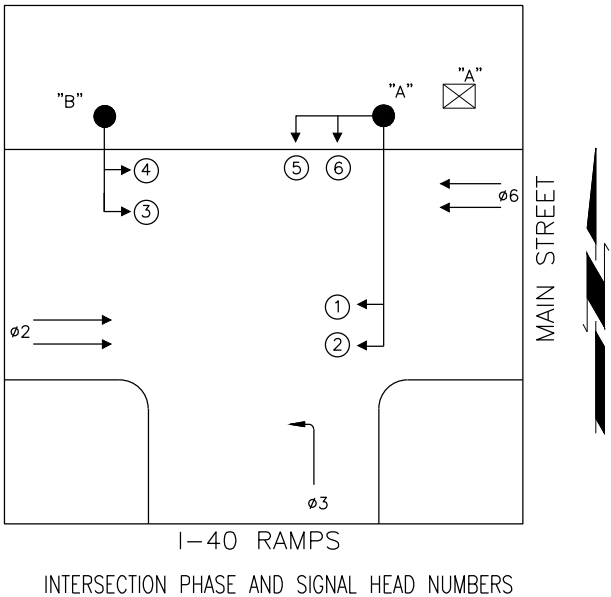
←G→ = GREEN ARROW  
←Y→ = YELLOW ARROW  
←R→ = RED ARROW

W = WALK  
DW = DON'T WALK  
FDW = FLASHING DON'T WALK  
FR = FLASHING RED

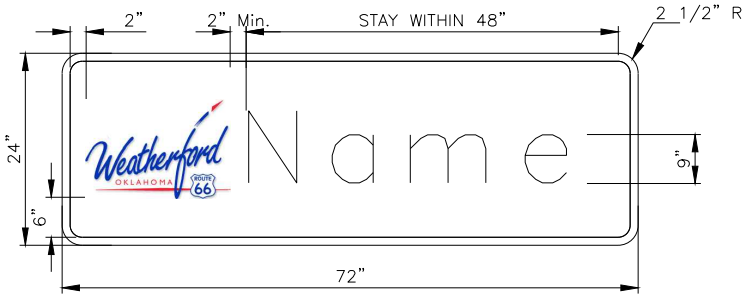


R10-12 SIGN DETAILS

SUMMARY OF MAST ARM SIGNS							
SER.	STREET NAME	POLE LOCATION	NO. OF SIGNS	L	W	SQ. FT. SIGN AREA	TOTAL AREA SQ. FT.
C	Main St	A	1	72	24	12.0	12.0
C	R10-12	B	1	24	30	5.0	5.0
						TOTAL SQ. FT.	17.0



MESSAGE	FONT	LOCATION	SIZE
STREET NAME	UPPERCASE 12" LOWERCASE 9"	CENTERED HORIZONTALLY BETWEEN BORDER AND CITY SEAL, 3.0" OFFSET FROM TOP OF SIGN BLANK	12.0"
CITY LOGO		2.0" OFFSET FROM THE LEFT, 5.8" OFFSET FROM THE TOP AND BOTTOM	18"X12"
BORDER			1.0"



MAST ARM STREET MARKER

NOT TO SCALE

NOTES:

STREET NAME SHOWN IS FOR ILLUSTRATION PURPOSES ONLY. FOR INDIVIDUAL SIGN NAMES SEE "SUMMARY OF MAST ARM SIGNS" TABLE THIS SHEET.

STREET NAME SIGNS SHALL BE MOUNTED ON MAST ARMS USING A MODIFIED MOUNTING BRACKET EQUIVALENT TO THOSE USED FOR MOUNTING SIGNAL HEADS. THESE SIGNS SHALL BE LOCATED 2'-0" FROM THE POLE ON THE MAST ARM. THICKNESS OF SIGN MATERIAL SHALL BE 1/16". SEE ODOT STD. SNS1-1 (LATEST REV.) FOR BRACKET DESIGN.

REFLECTORIZED GREEN - BACKGROUND  
REFLECTORIZED WHITE - MESSAGE & BORDER

MAIN ST.	CUSTER COUNTY
PHASE DIAGRAMS - MAIN & RAMPS	
JOB PIECE NO. 27911(06) SHEET NO. 56	