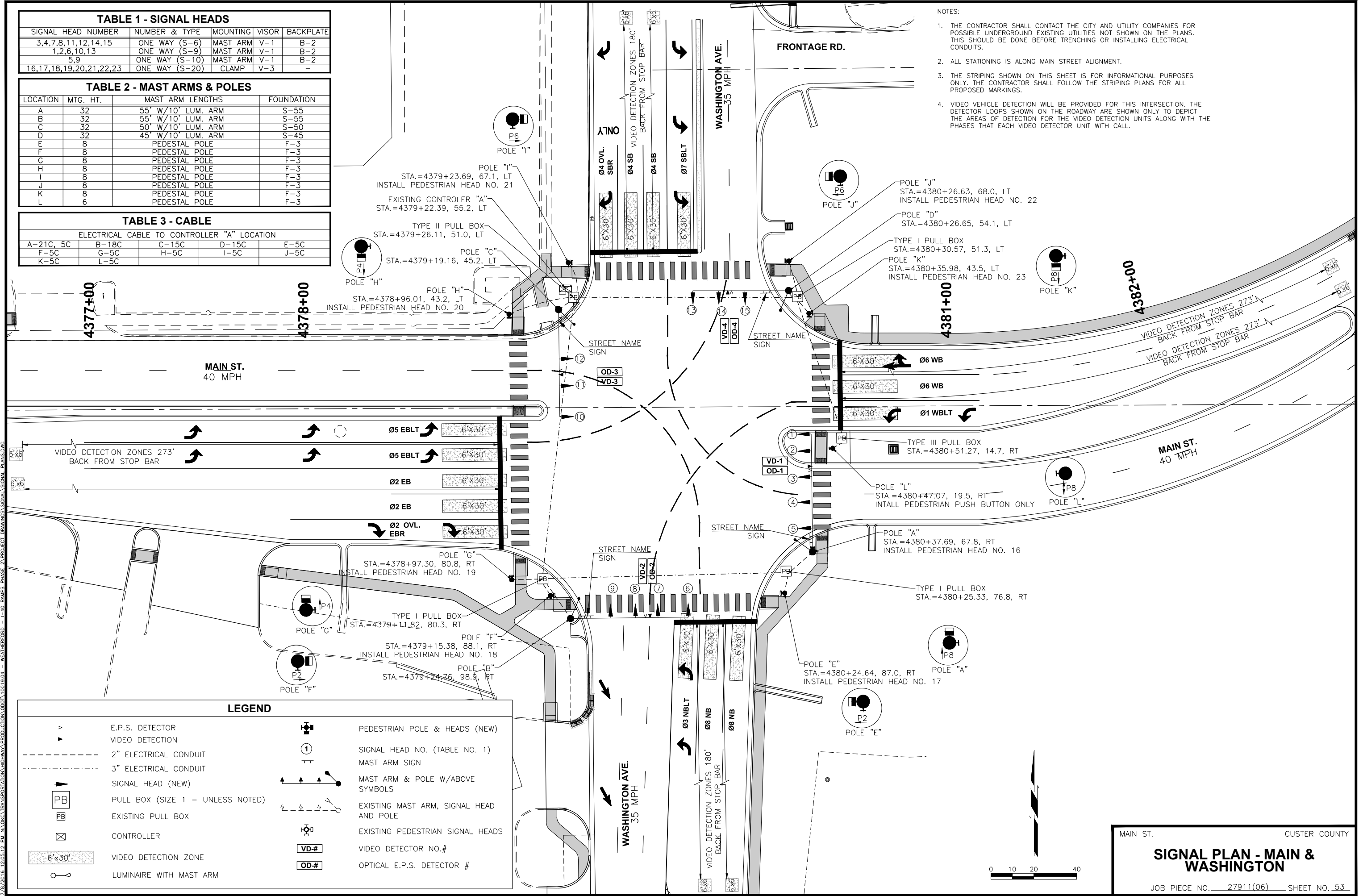


SIGNAL HEAD NUMBER	NUMBER & TYPE	MOUNTING	VISOR	BACKPLATE
3,4,7,8,11,12,14,15	ONE WAY (S-6)	MAST ARM	V-1	B-2
1,2,6,10,13	ONE WAY (S-9)	MAST ARM	V-1	B-2
5,9	ONE WAY (S-10)	MAST ARM	V-1	B-2
16,17,18,19,20,21,22,23	ONE WAY (S-20)	CLAMP	V-3	-

LOCATION	MTG. HT.	MAST ARM LENGTHS	FOUNDATION
A	32	55' W/10' LUM. ARM	S-55
B	32	55' W/10' LUM. ARM	S-55
C	32	50' W/10' LUM. ARM	S-50
D	32	45' W/10' LUM. ARM	S-45
E	8	PEDESTAL POLE	F-3
F	8	PEDESTAL POLE	F-3
G	8	PEDESTAL POLE	F-3
H	8	PEDESTAL POLE	F-3
I	8	PEDESTAL POLE	F-3
J	8	PEDESTAL POLE	F-3
K	8	PEDESTAL POLE	F-3
L	6	PEDESTAL POLE	F-3

ELECTRICAL CABLE TO CONTROLLER "A" LOCATION				
A-21C_5C	B-18C	C-15C	D-15C	E-5C
F-5C	G-5C	H-5C	I-5C	J-5C
K-5C	L-5C			

- NOTES:
1. THE CONTRACTOR SHALL CONTACT THE CITY AND UTILITY COMPANIES FOR POSSIBLE UNDERGROUND EXISTING UTILITIES NOT SHOWN ON THE PLANS. THIS SHOULD BE DONE BEFORE TRENCHING OR INSTALLING ELECTRICAL CONDUITS.
  2. ALL STATIONING IS ALONG MAIN STREET ALIGNMENT.
  3. THE STRIPING SHOWN ON THIS SHEET IS FOR INFORMATIONAL PURPOSES ONLY. THE CONTRACTOR SHALL FOLLOW THE STRIPING PLANS FOR ALL PROPOSED MARKINGS.
  4. VIDEO VEHICLE DETECTION WILL BE PROVIDED FOR THIS INTERSECTION. THE DETECTOR LOOPS SHOWN ON THE ROADWAY ARE SHOWN ONLY TO DEPICT THE AREAS OF DETECTION FOR THE VIDEO DETECTION UNITS ALONG WITH THE PHASES THAT EACH VIDEO DETECTOR UNIT WITH CALL.



**LEGEND**

	E.P.S. DETECTOR		PEDESTRIAN POLE & HEADS (NEW)
	VIDEO DETECTION		SIGNAL HEAD NO. (TABLE NO. 1)
	2" ELECTRICAL CONDUIT		MAST ARM SIGN
	3" ELECTRICAL CONDUIT		MAST ARM & POLE W/ABOVE SYMBOLS
	SIGNAL HEAD (NEW)		EXISTING MAST ARM, SIGNAL HEAD AND POLE
	PULL BOX (SIZE 1 - UNLESS NOTED)		EXISTING PEDESTRIAN SIGNAL HEADS
	EXISTING PULL BOX		VIDEO DETECTOR NO.#
	CONTROLLER		OPTICAL E.P.S. DETECTOR #
	VIDEO DETECTION ZONE		
	LUMINAIRE WITH MAST ARM		

MAIN ST. CUSTER COUNTY

**SIGNAL PLAN - MAIN & WASHINGTON**

JOB PIECE NO. 27911(06) SHEET NO. 53

7/28/2016 12:05:12 PM N:\CIVIL\TRANSPORTATION\HIGHWAY\PRODUCTION\0001\0019\_04 - WEATHERFORD - I-40 RAMP/PHASE 2\PROJECT DRAWINGS\SCHEMA SIGNAL PLANS.DWG