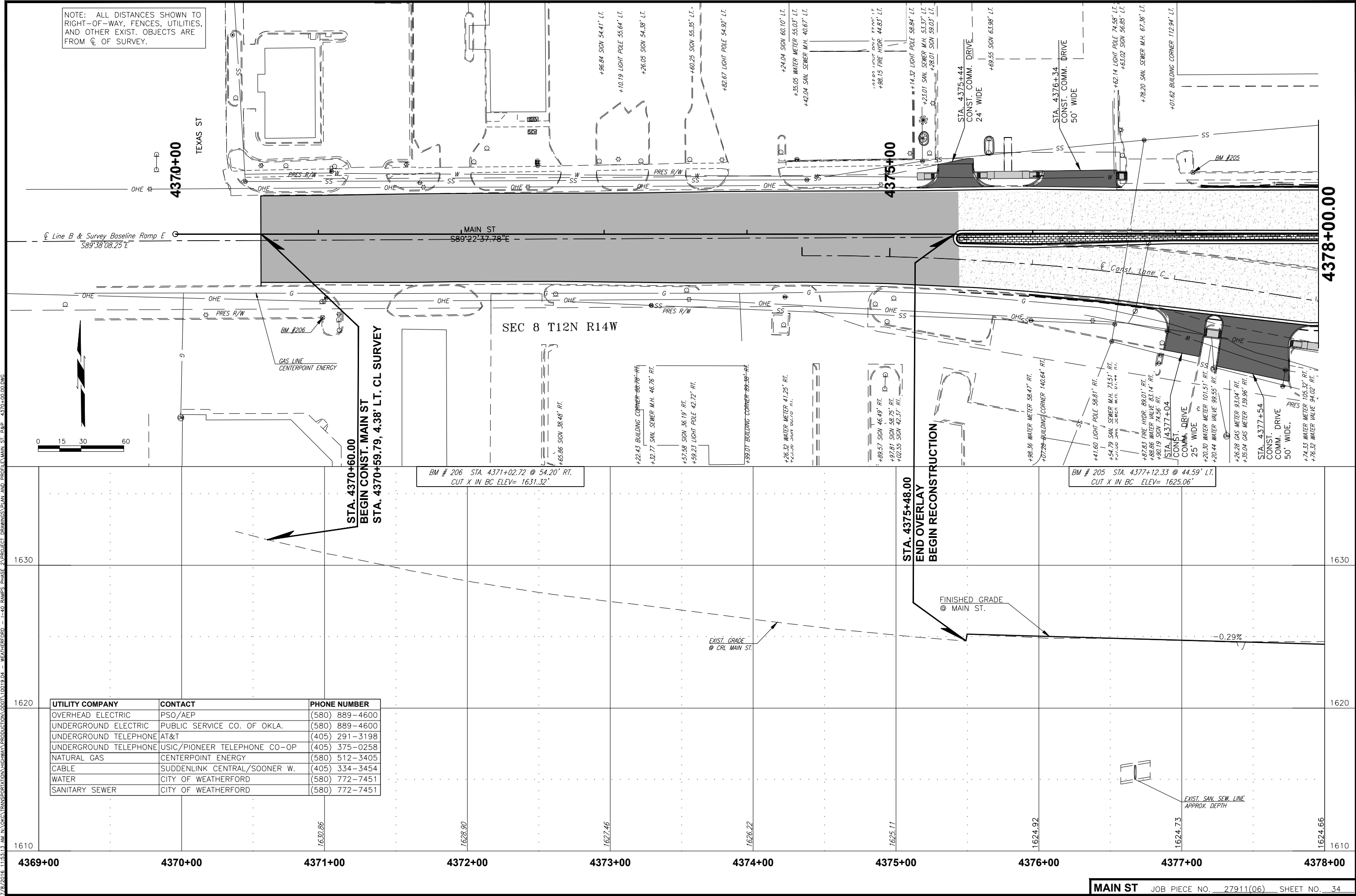


NOTE: ALL DISTANCES SHOWN TO RIGHT-OF-WAY, FENCES, UTILITIES, AND OTHER EXIST. OBJECTS ARE FROM CL OF SURVEY.



STA. 4370+60.00
 BEGIN CONST. MAIN ST
 STA. 4370+59.79, 4.38' LT. CL SURVEY

BM # 206 STA. 4371+02.72 @ 54.20' RT.
 CUT X IN BC ELEV= 1631.32'

STA. 4375+48.00
 END OVERLAY
 BEGIN RECONSTRUCTION

BM # 205 STA. 4377+12.33 @ 44.59' LT.
 CUT X IN BC ELEV= 1625.06'

UTILITY COMPANY	CONTACT	PHONE NUMBER
OVERHEAD ELECTRIC	PSO/AEP	(580) 889-4600
UNDERGROUND ELECTRIC	PUBLIC SERVICE CO. OF OKLA.	(580) 889-4600
UNDERGROUND TELEPHONE	AT&T	(405) 291-3198
UNDERGROUND TELEPHONE	USIC/PIONEER TELEPHONE CO-OP	(405) 375-0258
NATURAL GAS	CENTERPOINT ENERGY	(580) 512-3405
CABLE	SUDDENLINK CENTRAL/SOONER W.	(405) 334-3454
WATER	CITY OF WEATHERFORD	(580) 772-7451
SANITARY SEWER	CITY OF WEATHERFORD	(580) 772-7451

7/8/2016 11:55:13 AM N:\CIVIL\TRANSPORTATION\HIGHWAY\PRODUCTION\0001\04 - WEATHERFORD - L40 - RAMPS PHASE 2\PROJECT DRAWINGS\PLAN AND PROFILE\MAIN ST - P&P - 4370-00.DWG