

WHITE HAWK ENGINEERING AND DESIGN					
FED. ROAD DIST. NO.	STATE	PROJ. NO.	FISCAL YEAR	SHEET NO.	TOTAL SHEETS
	OKLA.				
DESCRIPTION			REVISIONS	DATE	

SECTION CORNER - FOUND #5 REBAR STAKE FOUND AND FILED BY TRANSUE LS 916 625/84 USED #5 REBAR AS FOUND IN PLACE AND SET 3 NEW REFERENCES.

1/4 SECTION CORNER - FOUND #4 REBAR STAKE SET AND FILED BY PENN LS 1086 11-14-91. PENN STATED THAT THE CORNER LOCATION WAS DETERMINED BY DOUBLE PROPORTIONATE DISTANCE AND STRAIGHT LINE BETWEEN THE SECTION CORNERS. USED THE #4 REBAR STAKE AS FOUND IN PLACE SET 3 NEW REFERENCES

SECTION CORNER - FOUND #4 REBAR STAKE FOUND AND FILED BY PENN LS 1086 10-15-91 USED #4 REBAR STAKE AS FOUND IN PLACE. SET 3 NEW REFERENCES.

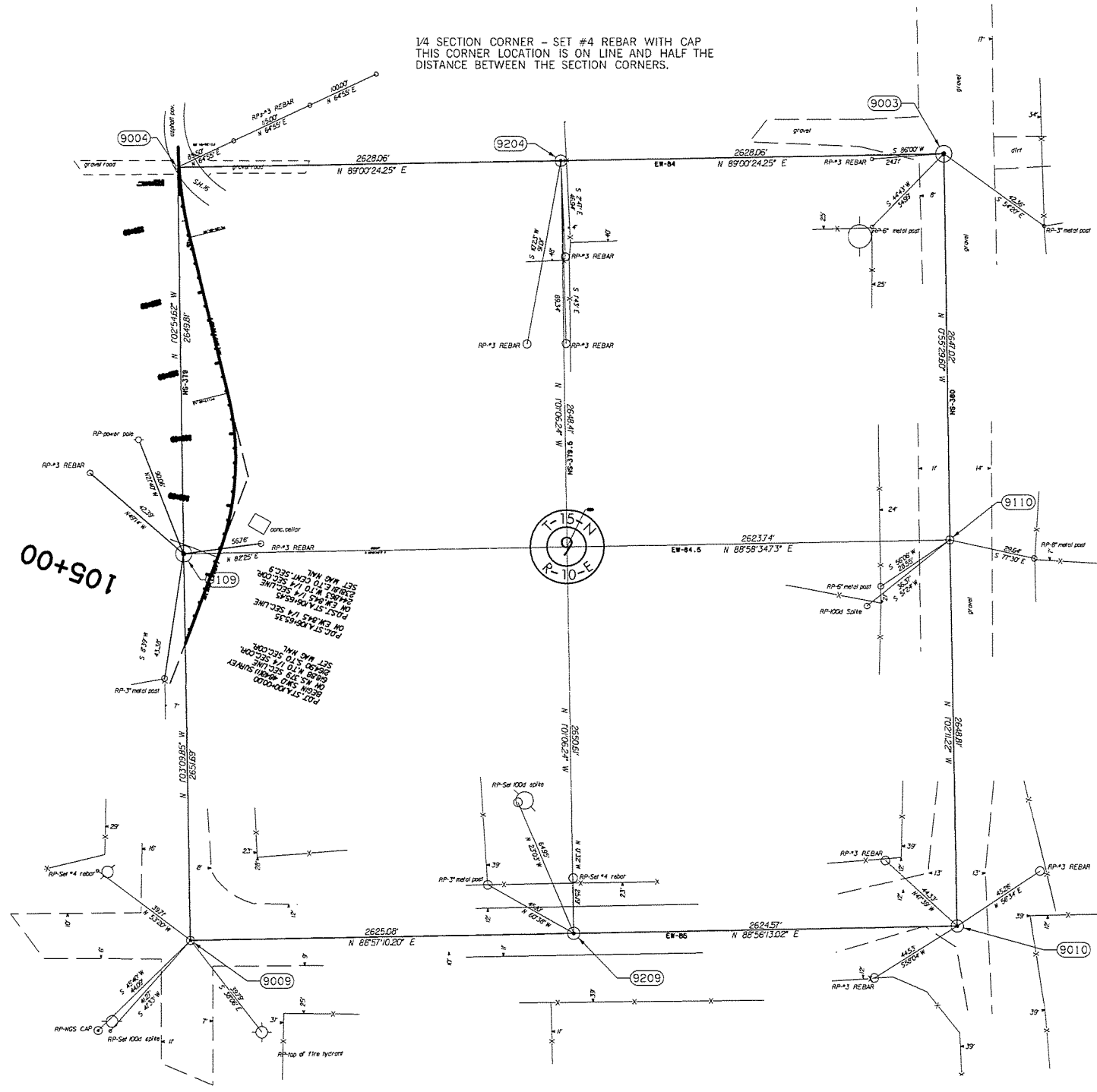
1/4 SECTION CORNER - SET #4 REBAR WITH CAP THIS CORNER LOCATION IS ON LINE AND HALF THE DISTANCE BETWEEN THE SECTION CORNERS.

SECTION CORNER - FOUND #5 REBAR STAKE FOUND AND FILED BY TRANSUE LS 916 625/84 USED #5 REBAR AS FOUND IN PLACE AND SET 3 NEW REFERENCES.

1/4 SECTION CORNER - FOUND #5 REBAR STAKE SET AND FILED BY TRANSUE LS 916 6-25-84. USED THE #5 REBAR STAKE AS FOUND IN PLACE ESTABLISHED 3 NEW REFERENCES

SECTION CORNER - FOUND #6 REBAR STAKE. Transue LS 916 FOUND A BENT AND RUSTY #4 REBAR STAKE AT THIS LOCATION AND REPLACED IT WITH A #6 REBAR STAKE. USED THE #6 REBAR STAKE AS FOUND IN PLACE. SET 3 NEW REFERENCES.

1/4 SECTION CORNER - FOUND #4 REBAR STAKE SET AND FILED BY PENN LS 1086 11-14-91 USED #4 REBAR STAKE AS FOUND IN PLACE. SET 2 NEW REFERENCES.



SCALE:
1" = 500'

NOTE: REFERENCE'S SHOWN ARE NOT TO SCALE.

PLS				WHITE HAWK ENGINEERING AND DESIGN 1265 S.EASTERN, MOORE, OK 75160 (405) 735-6096
DRAWN				SURVEY DATA SHEET
CHECKED				
APPROVED				
CREW				
SWO 4848 (1) PROJECT NO. 28858(04) SHEET NO. S16				