

WHITE HAWK ENGINEERING AND DESIGN					
FED. ROAD DIST. NO.	STATE	PROJ. NO.	FISCAL YEAR	SHEET NO.	TOTAL SHEETS
	OKLA.				
DESCRIPTION			REVISIONS	DATE	

1/4 SECTION CORNER - SET #4 REBAR WITH CAP
THIS CORNER LOCATION IS ON LINE AND HALF THE
DISTANCE BETWEEN THE SECTION CORNERS.

SECTION CORNER - FOUND #4 REBAR STAKE
WITH ODOT PLASTIC CAP PLS 1551. THIS CORNER
WAS ESTABLISHED BY DOUBLE PROPORTIONATE MEASUREMENT
BETWEEN THE ORIGINAL STONE 0.5 MILES W. AND CORNER
1.0 MILES EAST & ORIGINAL STONE 1.0 MILES SOUTHE AND
CORNER 1.0 MILES NORTH. USED MONUMENT AS FOUND IN
PLACE. FOUND AND USED ODOT REFERENCES.

SECTION CORNER - FOUND #5 REBAR STAKE
FOUND AND FILED BY TRANSUE LS 916 62584
USED #5 REBAR AS FOUND IN PLACE AND
SET 3 NEW REFERENCES.

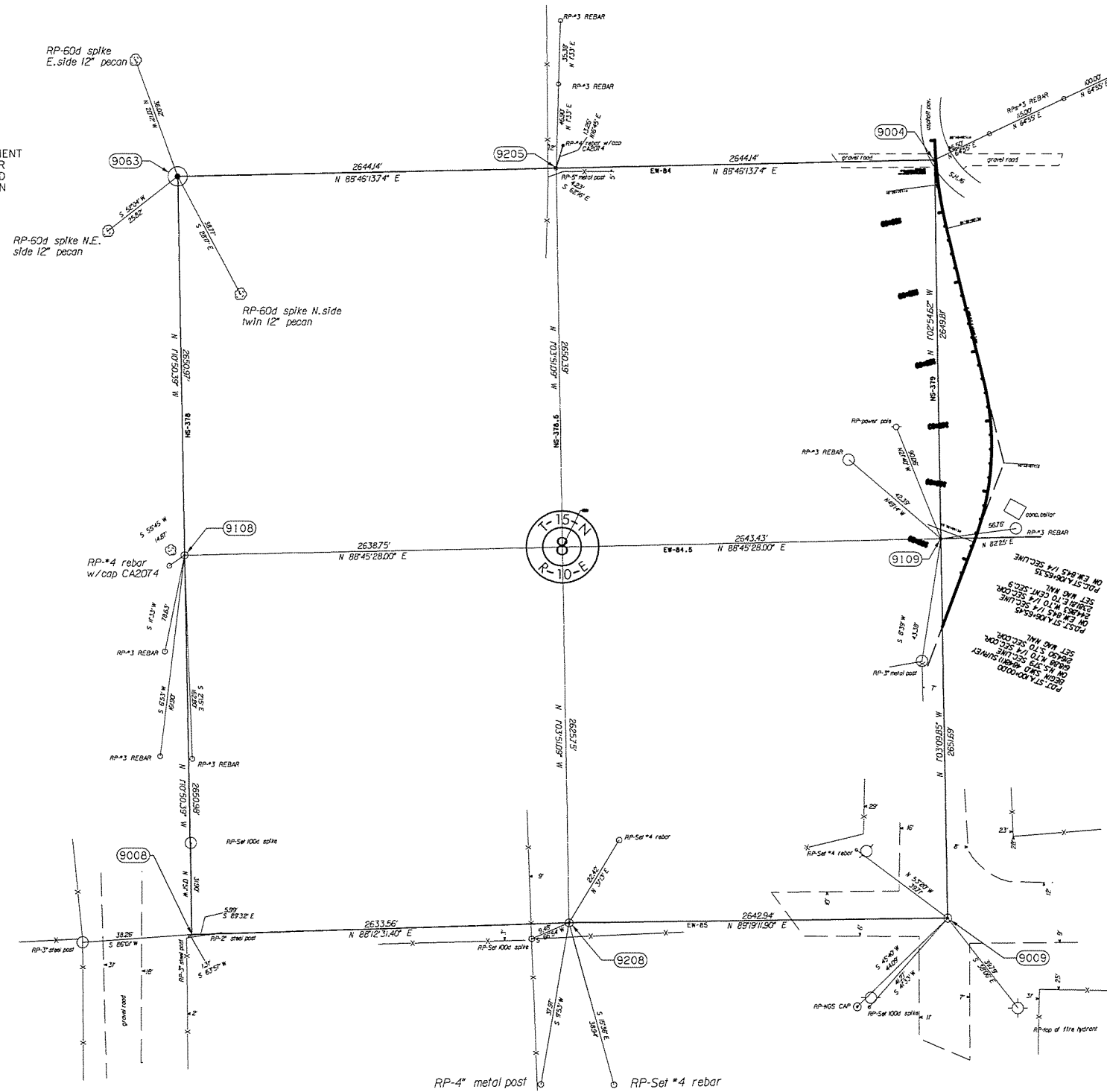
1/4 SECTION CORNER - SET A #4 REBAR STAKE
WITH A WHITE HAWK CAP. THIS CORNER LOCATION
IS ON LINE AND HALF THE DISTANCE BETWEEN
THE SECTION CORNERS.

1/4 SECTION CORNER - FOUND #4 REBAR STAKE
SET AND FILED BY PENN LS 1086 11-14-91. PENN
STATED THAT THE CORNER LOCATION WAS DETERMINED
BY DOUBLE PROPORTIONATE DISTANCE AND STRAIGHT
LINE BETWEEN THE SECTION CORNERS.
USED THE #4 REBAR STAKE AS FOUND IN PLACE
SET 3 NEW REFERENCES

SECTION CORNER - FOUND ORIGINAL STONE IN PLACE
FOUND AND FILED BY PENN LS 1086 42998
SET 3 NEW REFERENCES.

SECTION CORNER - FOUND #4 REBAR STAKE
FOUND AND FILED BY PENN LS 1086 10-15-91
USED #4 REBAR STAKE AS FOUND IN PLACE.
SET 3 NEW REFERENCES.

1/4 SECTION CORNER - FOUND #4 REBAR STAKE
SET AND FILED BY PENN LS 1086 10-15-91. PENN
STATED THAT THE CORNER LOCATION WAS ACCORDING
TO THE PLAT DISTANCE AND BEARING OF THE
ORIGINAL TOWN OF SLICK OKLAHOMA.
USED THE #4 REBAR STAKE AS FOUND IN PLACE
SET 3 NEW REFERENCES



SCALE:
1" = 500'

NOTE: REFERENCE'S SHOWN ARE NOT TO SCALE.

PLS		WHITE HAWK ENGINEERING AND DESIGN
DRAWN		1265 S.EASTERN, MOORE, OK 73160 (405) 735-6096
CHECKED		SURVEY DATA SHEET
APPROVED		
CREW		
SWO 4848 (1) PROJECT NO. 28858(04) SHEET NO. S15		