

| WHITE HAWK ENGINEERING AND DESIGN |       |           |             |           |              |
|-----------------------------------|-------|-----------|-------------|-----------|--------------|
| FED. ROAD DIST. NO.               | STATE | PROJ. NO. | FISCAL YEAR | SHEET NO. | TOTAL SHEETS |
|                                   | OKLA. |           |             |           |              |
| DESCRIPTION                       |       |           | REVISIONS   | DATE      |              |

SECTION CORNER - FOUND MAG NAIL WITH A WASHER PLS 1551. THIS CORNER LOCATION WAS ESTABLISHED UNDER S.W.O. 4545(1) FROM U.S.P.W. PROJ. NO. NRS 384-B PLANS & SAP No. 1016(1) PLANS. USED MONUMENT AS FOUND IN PLACE. FOUND AND USED O.D.O.T. REFERENCES.

1/4 SECTION CORNER - SET A MAG NAIL WITH AN ALUMINUM WASHER FLUSH WITH THE ASPHALT PAV. THIS CORNER LOCATION IS ON LINE AND HALF THE DISTANCE BETWEEN THE SECTION CORNERS.

SECTION CORNER - FOUND #6 REBAR STAKE FOUND AND FILED BY PENN LS 1086 2/24/95 USED #6 REBAR AS FOUND IN PLACE AND SET 3 NEW REFERENCES.

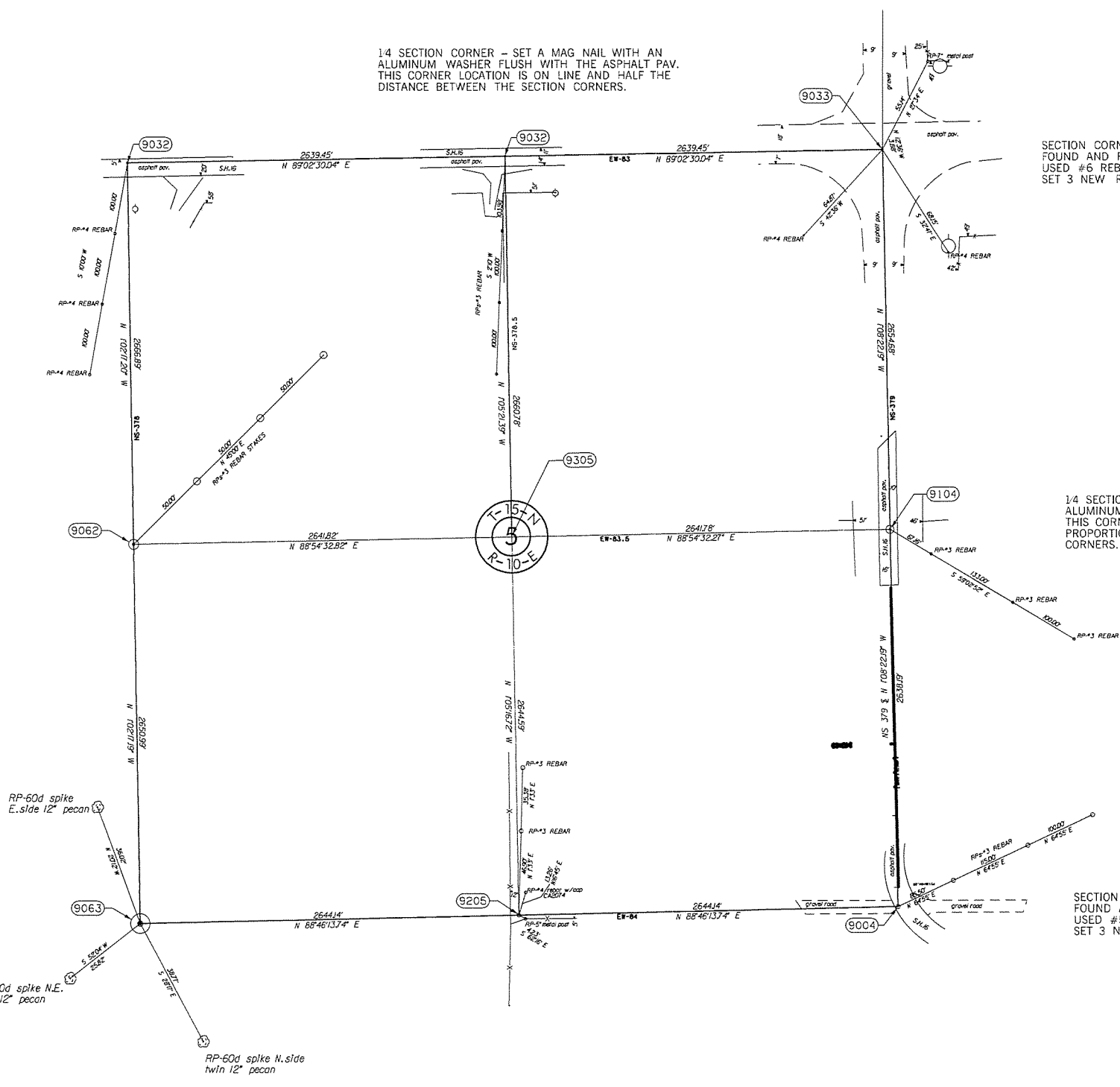
1/4 SECTION CORNER - FOUND #4 REBAR STAKE WITH ODOT PLASTIC CAP PLS 1551. THIS CORNER IS ON LINE AND PROPORTIONATE MEASUREMENT BETWEEN THE SECTION CORNERS NORTH AND SOUTH. USED MONUMENT AS FOUND IN PLACE. FOUND AND USED ODOT REFERENCES.

1/4 SECTION CORNER - SET A MAG NAIL WITH AN ALUMINUM WASHER IN ASPHALT PAVING THIS CORNER LOCATION IS ON LINE AND PROPORTIONAL MEASUREMENT BETWEEN THE SECTION CORNERS.

SECTION CORNER - FOUND #4 REBAR STAKE WITH ODOT PLASTIC CAP PLS 1551. THIS CORNER WAS ESTABLISHED BY DOUBLE PROPORTIONATE MEASUREMENT BETWEEN THE ORIGINAL STONE 0.5 MILES W. AND CORNER 1.0 MILES EAST & ORIGINAL STONE 1.0 MILES SOUTH AND CORNER 1.0 MILES NORTH. USED MONUMENT AS FOUND IN PLACE. FOUND AND USED ODOT REFERENCES.

SECTION CORNER - FOUND #5 REBAR STAKE FOUND AND FILED BY TRANSUE LS 916 6/25/84 USED #5 REBAR AS FOUND IN PLACE AND SET 3 NEW REFERENCES.

1/4 SECTION CORNER - SET #4 REBAR WITH CAP THIS CORNER LOCATION IS ON LINE AND HALF THE DISTANCE BETWEEN THE SECTION CORNERS.



SCALE: 1" = 500'

NOTE: REFERENCE'S SHOWN ARE NOT TO SCALE.

|  |  |  |
|--|--|--|
| PLS  |  | WHITE HAWK ENGINEERING AND DESIGN              |
| DRAWN  |  | 1265 S.EASTERN, MOORE, OK 73160 (405) 735-6096 |
| CHECKED  |  | <b>SURVEY DATA SHEET</b>                       |
| APPROVED   |  |  |
| CREW   |  |  |
| SWO 4848 (1) PROJECT NO. 28858(04) SHEET NO. S14 |  |  |