

WHITE HAWK ENGINEERING AND DESIGN					
FED. ROAD DIST. NO.	STATE	PROJ. NO.	FISCAL YEAR	SHEET NO.	TOTAL SHEETS
	OKLA.				
DESCRIPTION		REVISIONS		DATE	

SECTION CORNER - FOUND #6 REBAR STAKE FOUND AND FILED BY PENN LS 1086 2/24/95 USED #6 REBAR AS FOUND IN PLACE AND SET 3 NEW REFERENCES.

1/4 SECTION CORNER - SET A MAG NAIL WITH AN ALUMINUM WASHER IN ASPHALT PAVING THIS CORNER LOCATION IS ON LINE AND PROPORTIONAL MEASUREMENT BETWEEN THE SECTION CORNERS.

SECTION CORNER - FOUND #5 REBAR STAKE FOUND AND FILED BY TRANSUE LS 916 6/25/84 USED #5 REBAR AS FOUND IN PLACE AND SET 3 NEW REFERENCES.

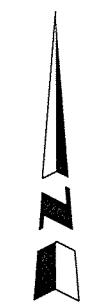
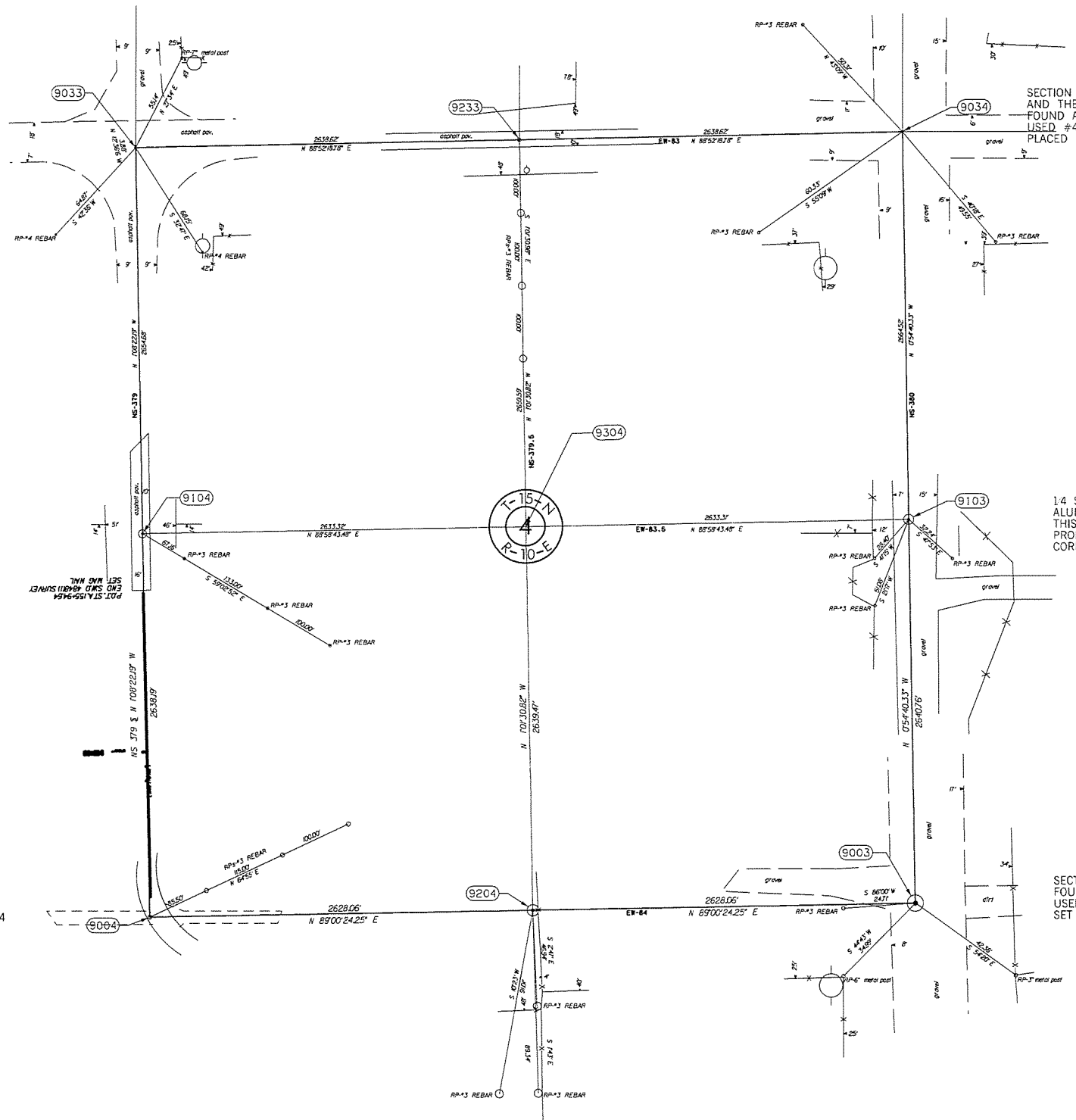
1/4 SECTION CORNER - SET MAG NAIL WITH ALUMINUM WASHER. THIS CORNER LOCATION IS ON LINE AND HALF THE DISTANCE BETWEEN THE SECTION CORNERS.

SECTION CORNER - FOUND #4 REBAR STAKE AND THE REFERENCES BY PENN LS 1088 FOUND AND FILED BY PENN LS 1088 2/4/95 USED #4 REBAR AS FOUND IN PLACE AND PLACED 3 NEW REFERENCES

1/4 SECTION CORNER - SET A MAG NAIL WITH AN ALUMINUM WASHER 6" DEEP IN GRAVEL ROAD THIS CORNER LOCATION IS ON LINE AND PROPORTIONAL MEASUREMENT BETWEEN THE SECTION CORNERS.

SECTION CORNER - FOUND #5 REBAR STAKE FOUND AND FILED BY TRANSUE LS 916 6/25/84 USED #5 REBAR AS FOUND IN PLACE AND SET 3 NEW REFERENCES.

1/4 SECTION CORNER - SET #4 REBAR WITH CAP THIS CORNER LOCATION IS ON LINE AND HALF THE DISTANCE BETWEEN THE SECTION CORNERS.



SCALE:
1" = 500'

NOTE: REFERENCE'S SHOWN ARE NOT TO SCALE.

PLS		WHITE HAWK ENGINEERING AND DESIGN 1265 S.EASTERN, MOORE, OK 73160 (405) 735-6096 SURVEY DATA SHEET SWO 4848 (1) PROJECT NO. 28858(04) SHEET NO. S13
DRAWN		
CHECKED		
APPROVED		
CREW		