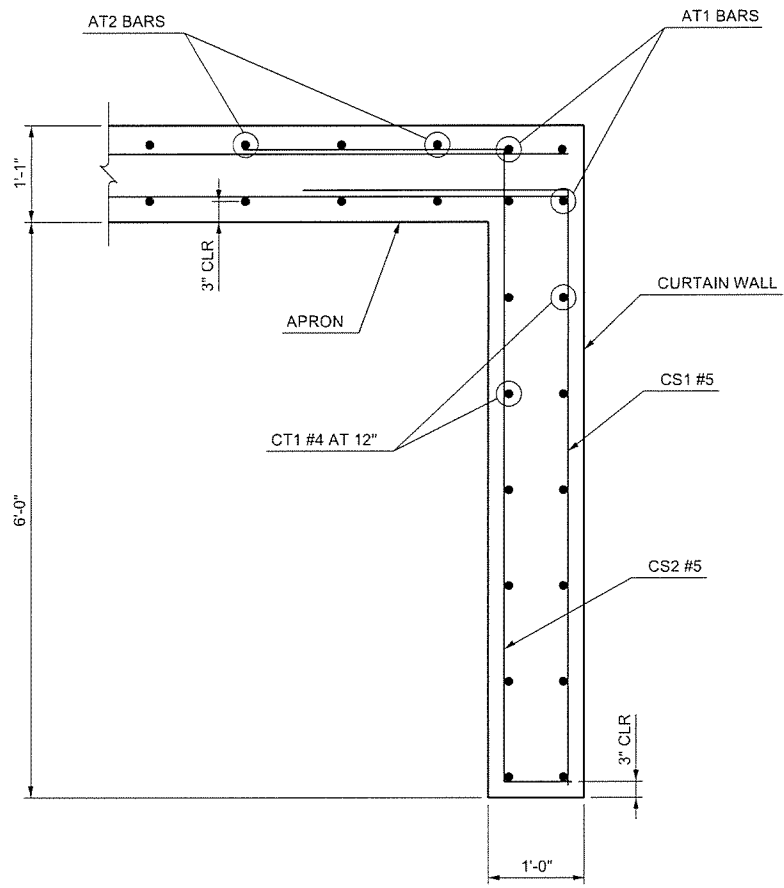
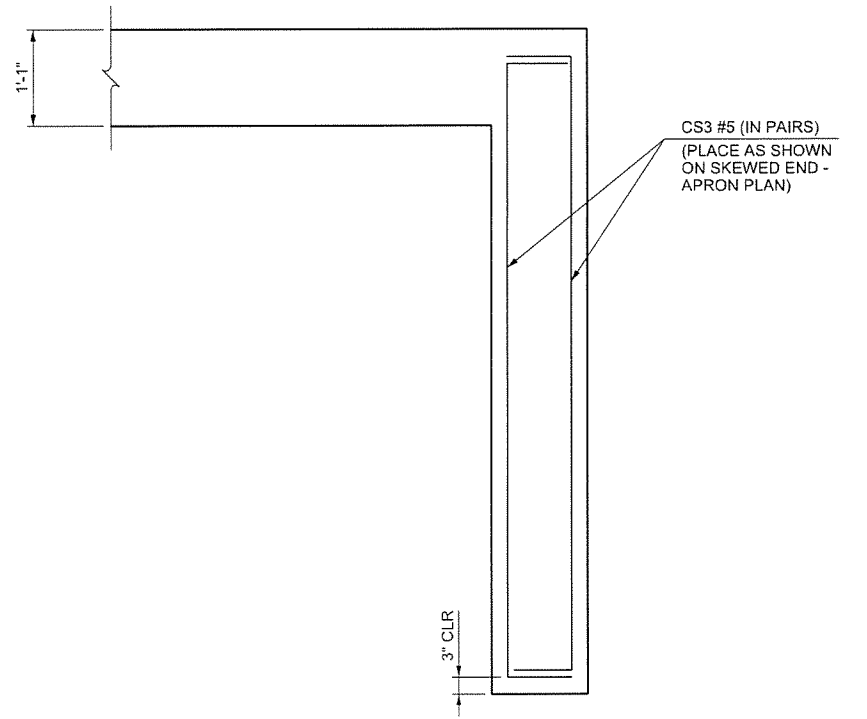


APRON, HEADWALL & CURTAIN WALL BAR LIST					
ONE APRON, ONE HEADWALL, AND ONE CURTAIN WALL SHOWN					
10' SPAN					
MARK	SIZE	NO.	FORM	LENGTH	REMARKS
AC1	#4	2	BNT	3'-8"	
AC2	#4	2	BNT	3'-8"	
② AD1	#4	2	STR	71'-4"	
AL1	#4	48	STR	37'-9"	
① AL2	#4	112	STR	18'-5½" AVG.	2'-7" TO 34'-4"
② AT1	#4	4	STR	84'-5"	
② AT2	#4	13	STR	73'-4" AVG.	63'-0" TO 83'-8"
② AT3	#5	13	STR	73'-4" AVG.	63'-0" TO 83'-8"
AT4	#4	22	STR	40'-6" AVG.	22'-3" TO 58'-9"
AT5	#5	22	STR	40'-6" AVG.	22'-3" TO 58'-9"
CH	#4	4	STR	22'-8"	
CL1	#4	26	BNT	4'-4"	
CL2	#4	26	BNT	4'-3"	
CS1	#5	162	BNT	7'-9"	
CS2	#5	162	BNT	9'-1"	
CS3	#5	4	BNT	8'-0"	
② CT1	#4	12	STR	84'-5"	

WINGWALL BAR LIST					
LONG AND SHORT WING INCLUDED					
MARK	SIZE	NO.	FORM	LENGTH	REMARKS
WD1	#9	23	BNT	8'-4"	
WD2	#9	23	STR	8'-4"	
WH1	#4	2	STR	34'-4"	
① WH2	#4	22	STR	17'-7½" AVG.	3'-3" TO 32'-0"
WH3	#5	2	STR	35'-3"	
② WH4	#4	2	STR	71'-4"	
② WH5	#4	2	STR	66'-7"	
① WH6	#4	20	STR	32'-0" AVG.	5'-9" TO 58'-3"
② WH7	#5	2	STR	71'-3"	
WL1	#7	50	BNT	14'-5"	
WL2	#5	81	BNT	10'-3"	
WL3	#5	8	BNT	4'-9" AVG.	3'-6" TO 6'-0"
WL4	#5	17	BNT	4'-7½" AVG.	3'-3" TO 6'-0"
WT1	#4	81	STR	2'-10"	
WT2	#4	5	STR	12'-0"	
WT3	#4	25	STR	7'-8" AVG.	3'-6" TO 11'-10"
WT4	#4	8	STR	2'-9" AVG.	1'-6" TO 4'-0"
WT5	#4	51	STR	7'-7½" AVG.	3'-4" TO 11'-11"
WT6	#4	17	STR	2'-7½" AVG.	1'-3" TO 4'-0"
WV1	#5	4	STR	12'-0"	
WV2	#5	15	STR	10'-7½" AVG.	9'-5" TO 11'-10"
WV3	#5	17	STR	6'-3½" AVG.	3'-6" TO 9'-1"
WV4	#5	31	STR	10'-7½" AVG.	9'-4" TO 11'-11"
WV5	#5	35	STR	6'-3" AVG.	3'-4" TO 9'-2"
U1	#4	2	BNT	3'-0"	



CURTAIN WALL DETAIL



CURTAIN WALL END DETAIL

NOTE: SEE RCB CULVERTS - BARREL DETAILS FOR ADDITIONAL INFORMATION.

- ① QUANTITY SHOWN REPRESENTS TWO SETS.
- ② INCLUDES 2'-6" LAP.

6/6/2016 End Section 4_4.dgn

PREPARED BY:
THE SCHEMMER ASSOCIATES
FIRM C. A. 5964

DATE: _____

STEPHEN D. KATHOL, P.E.
OKLA. REG. NO. 24623

DESIGN	MKR	I-16	S.H.-16 OVER CHICKEN CREEK
DRAWN	MKR	I-16	
CHECKED	DGB	I-16	
APPROVED			
SQUAD	SCHEMMER		

BRIDGE "A"
RIGHT END SECTION DETAILS
(SHEET 4 OF 4)

STATE JOB NO. 28858(04) SHEET NO. 51
CREEK COUNTY SH-16