

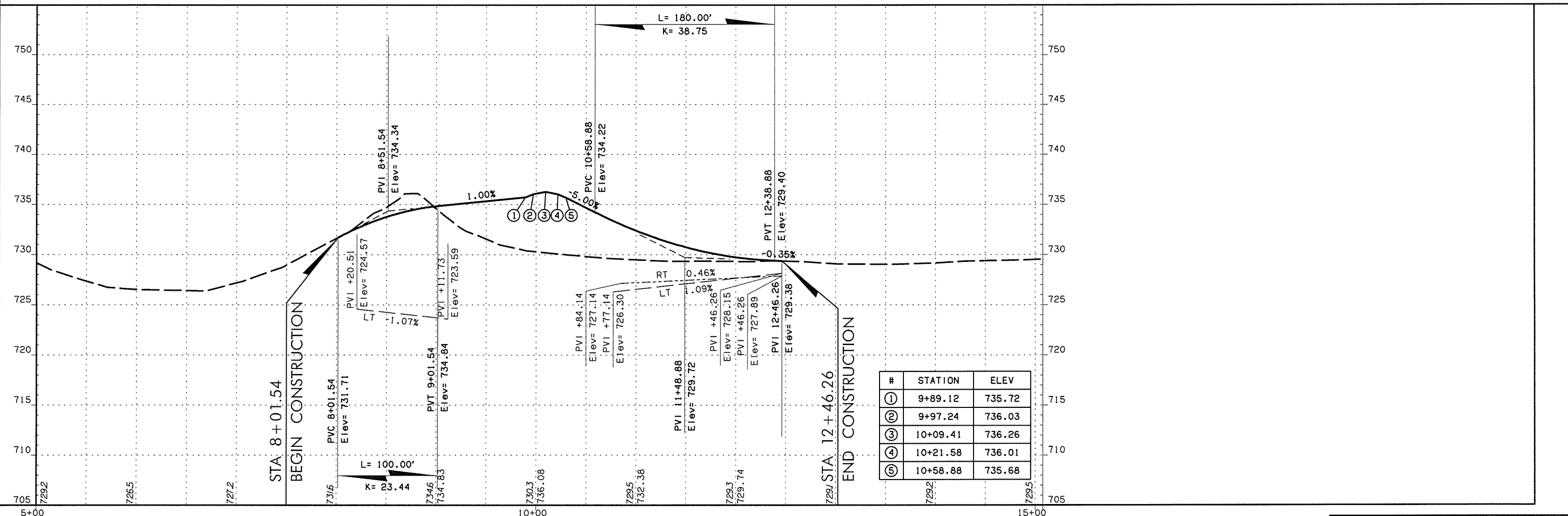
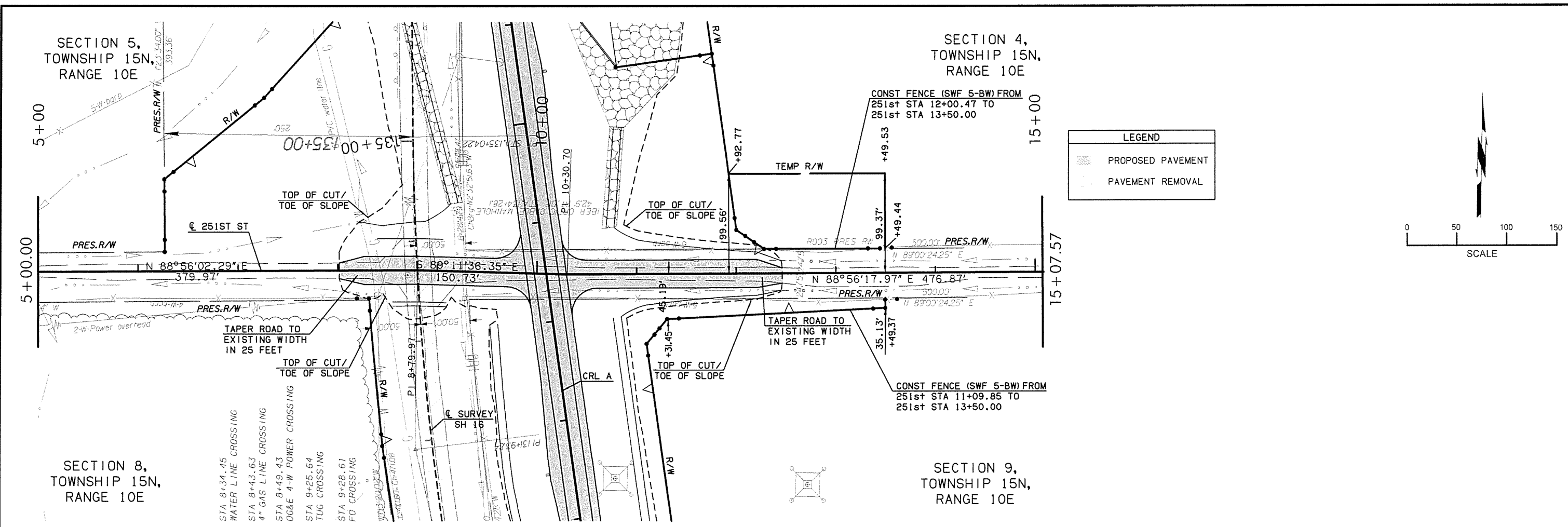
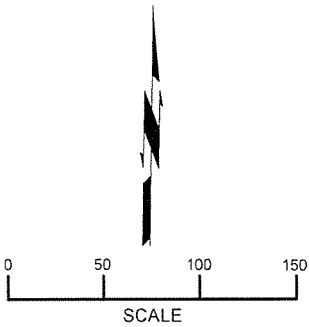
SECTION 5,
TOWNSHIP 15N,
RANGE 10E

SECTION 4,
TOWNSHIP 15N,
RANGE 10E

SECTION 8,
TOWNSHIP 15N,
RANGE 10E

SECTION 9,
TOWNSHIP 15N,
RANGE 10E

LEGEND	
	PROPOSED PAVEMENT
	PAVEMENT REMOVAL



6/6/2016 P&P 06 251st.dgn