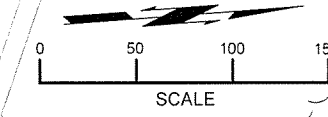
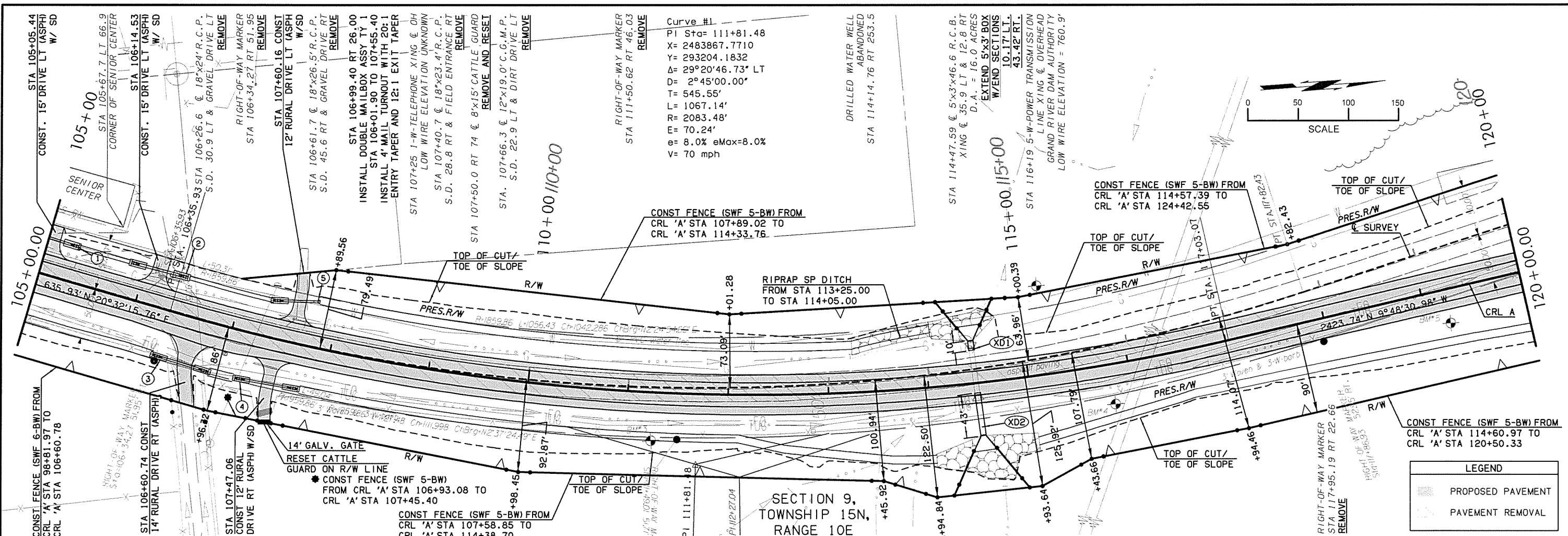
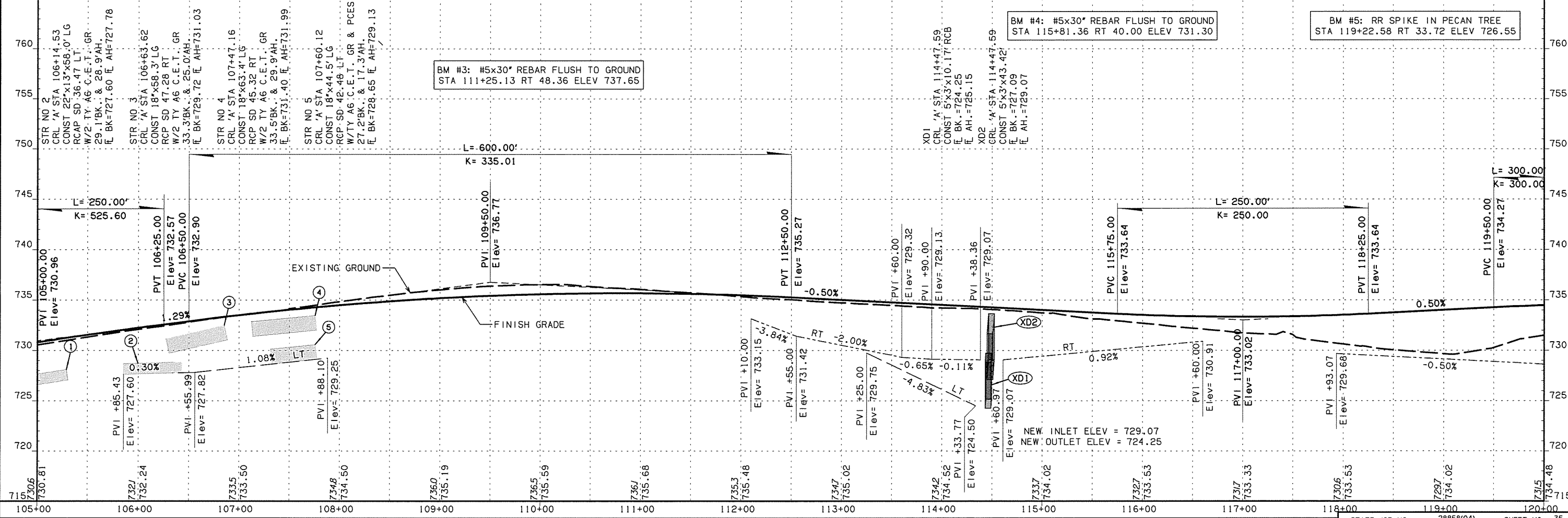


6/6/2016 P&P 02 SH 16.dgn



LEGEND	
	PROPOSED PAVEMENT
	PAVEMENT REMOVAL

SECTION 9,
TOWNSHIP 15N,
RANGE 10E



BM #4: #5x30" REBAR FLUSH TO GROUND
STA 115+81.36 RT 40.00 ELEV 731.30

BM #3: #5x30" REBAR FLUSH TO GROUND
STA 111+25.13 RT 48.36 ELEV 737.65

BM #5: RR SPIKE IN PECAN TREE
STA 119+22.58 RT 33.72 ELEV 726.55

NEW INLET ELEV = 729.07
NEW OUTLET ELEV = 724.25