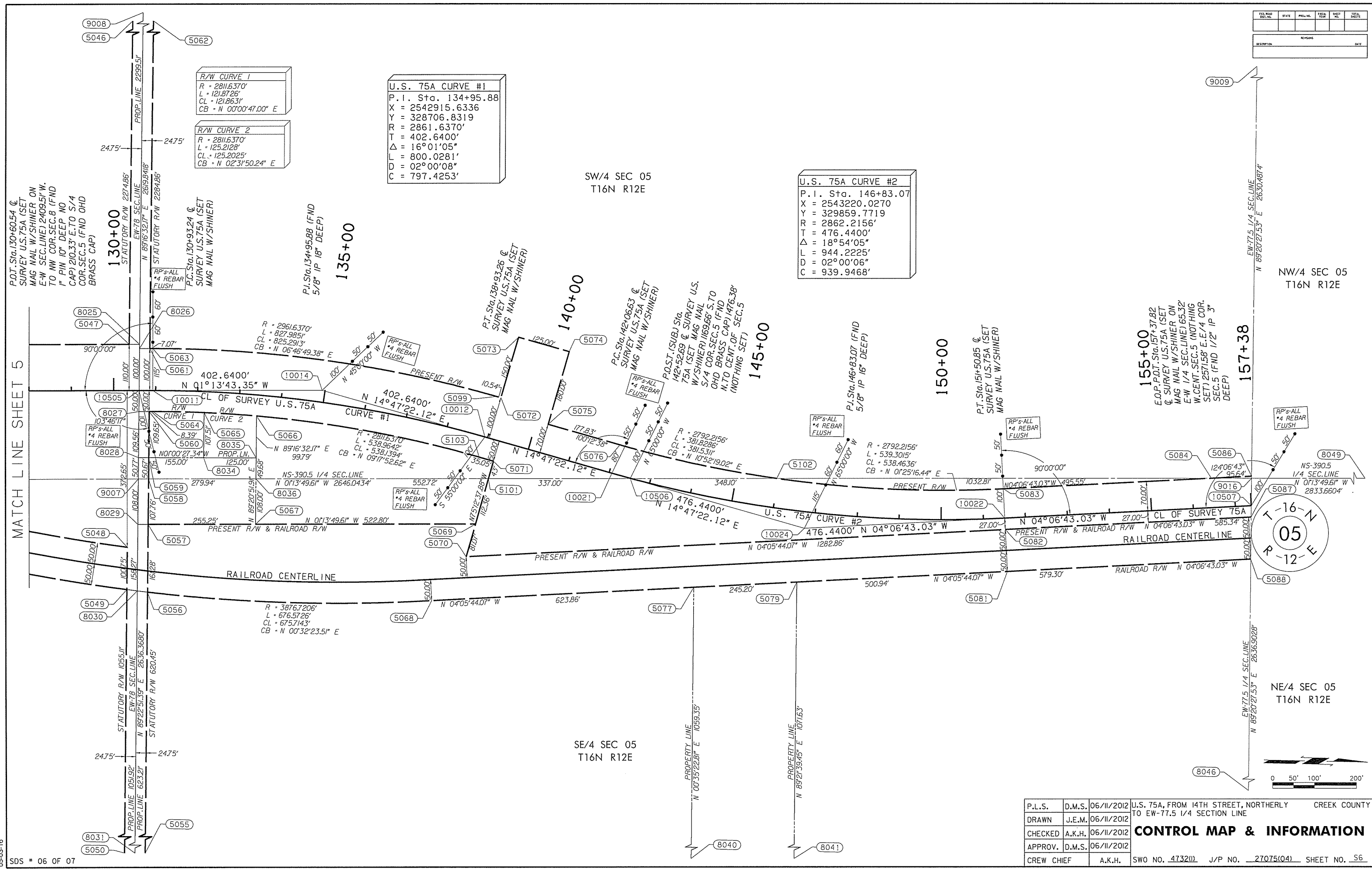
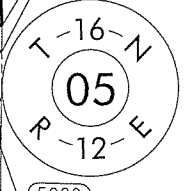


REV. NO.	DATE	DESCRIPTION



MATCH LINE SHEET 5



P.L.S.	D.M.S.	06/11/2012	U.S. 75A, FROM 14TH STREET, NORTHERLY TO EW-77.5 1/4 SECTION LINE	CREEK COUNTY
DRAWN	J.E.M.	06/11/2012	<b>CONTROL MAP &amp; INFORMATION</b>	
CHECKED	A.K.H.	06/11/2012		
APPROV.	D.M.S.	06/11/2012		
CREW CHIEF	A.K.H.	SWO NO. 47320	J/P NO. 27075(04)	SHEET NO. 56