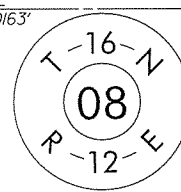
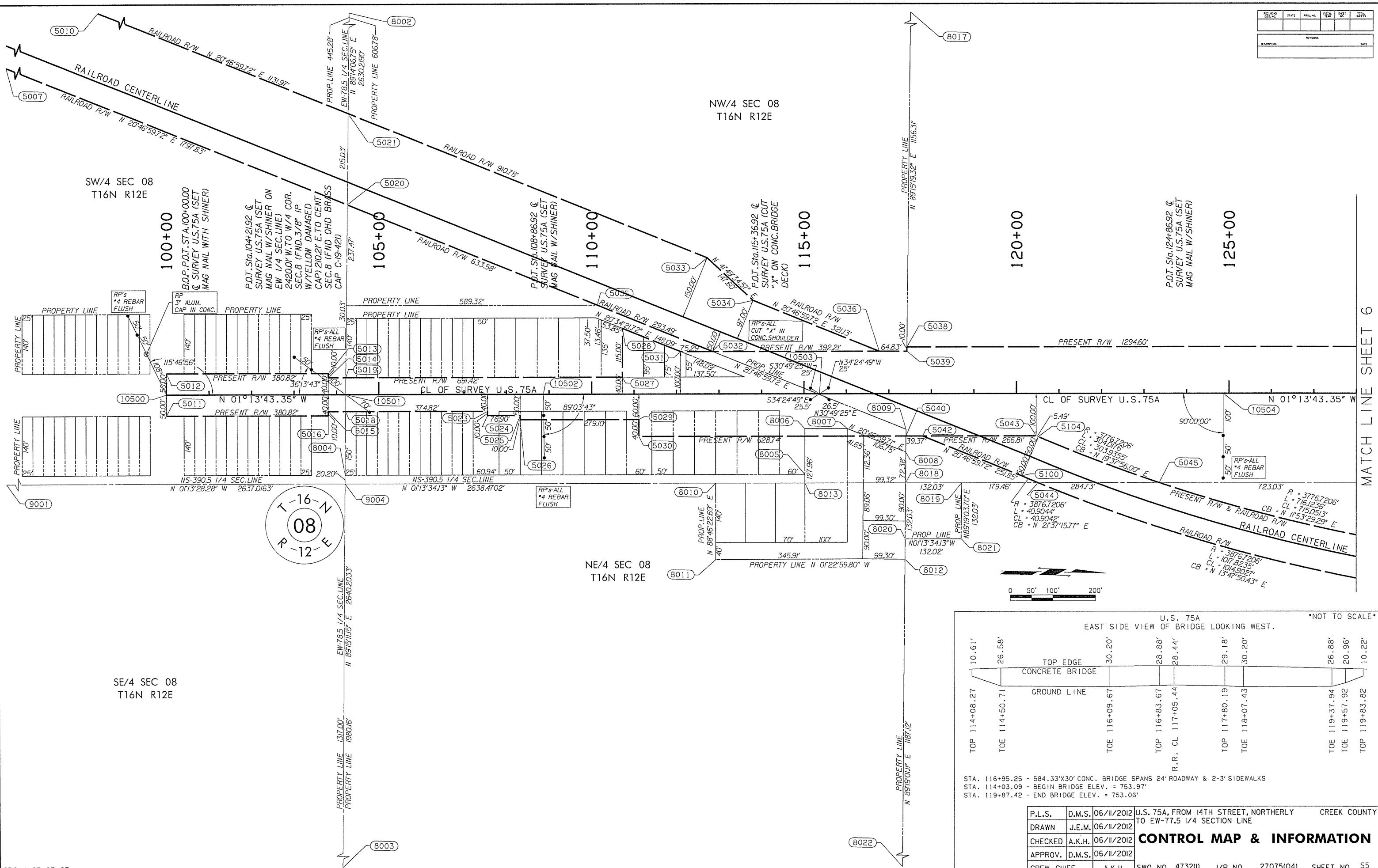
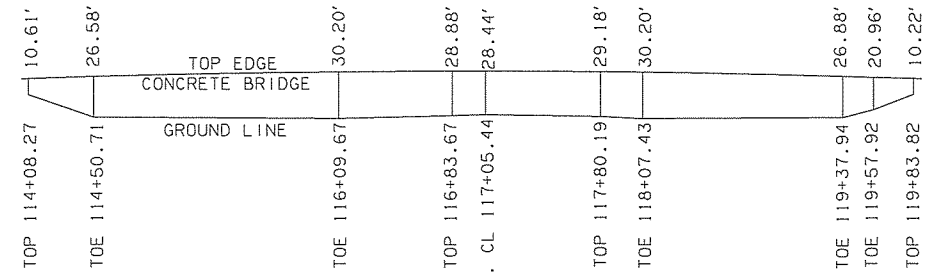


REV. NO.	DATE	BY	DESCRIPTION



U.S. 75A
EAST SIDE VIEW OF BRIDGE LOOKING WEST. *NOT TO SCALE*



STA. 116+95.25 - 584.33'x30' CONC. BRIDGE SPANS 24' ROADWAY & 2-3' SIDEWALKS
 STA. 114+03.09 - BEGIN BRIDGE ELEV. = 753.97'
 STA. 119+87.42 - END BRIDGE ELEV. = 753.06'

P.L.S.	D.M.S.	06/11/2012	U.S. 75A, FROM 14TH STREET, NORTHERLY TO EW-77.5 1/4 SECTION LINE	CREEK COUNTY
DRAWN	J.E.M.	06/11/2012	CONTROL MAP & INFORMATION	
CHECKED	A.K.H.	06/11/2012		
APPROV.	D.M.S.	06/11/2012		
CREW CHIEF	A.K.H.	SWO NO. 4732(W)	J/P NO. 27075(Q4)	SHEET NO. 55

MATCH LINE SHEET 6