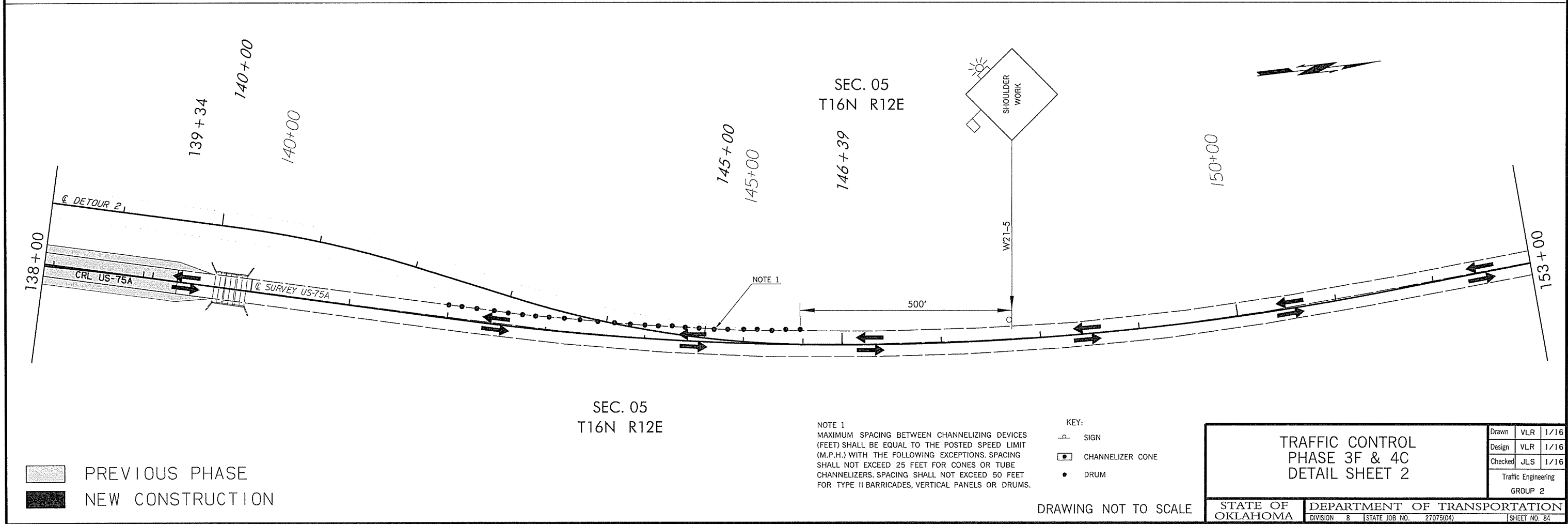
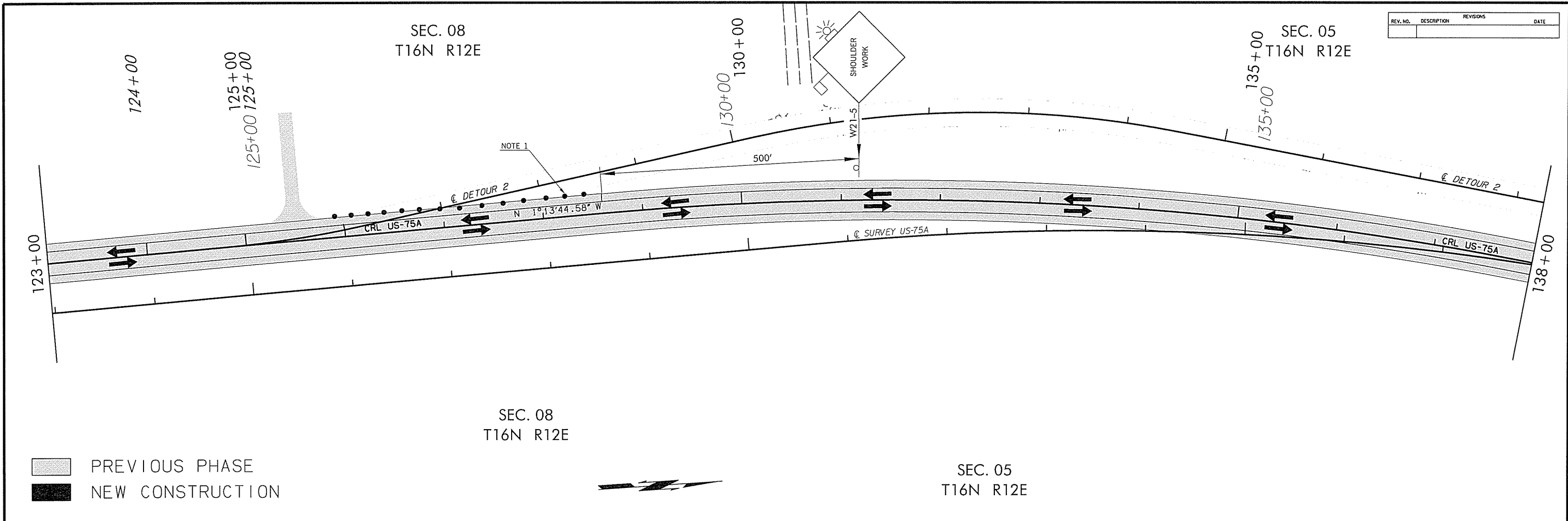


REV. NO.	DESCRIPTION	REVISIONS	DATE



NOTE 1
MAXIMUM SPACING BETWEEN CHANNELIZING DEVICES (FEET) SHALL BE EQUAL TO THE POSTED SPEED LIMIT (M.P.H.) WITH THE FOLLOWING EXCEPTIONS. SPACING SHALL NOT EXCEED 25 FEET FOR CONES OR TUBE CHANNELIZERS. SPACING SHALL NOT EXCEED 50 FEET FOR TYPE II BARRICADES, VERTICAL PANELS OR DRUMS.

- KEY:
- SIGN
 - ▣ CHANNELIZER CONE
 - DRUM

DRAWING NOT TO SCALE

TRAFFIC CONTROL PHASE 3F & 4C DETAIL SHEET 2			Drawn	VLR	1/16
			Design	VLR	1/16
STATE OF OKLAHOMA DEPARTMENT OF TRANSPORTATION DIVISION 8 STATE JOB NO. 27075(04) SHEET NO. 84 CREEK COUNTY US-75A			Checked	JLS	1/16
			Traffic Engineering GROUP 2		