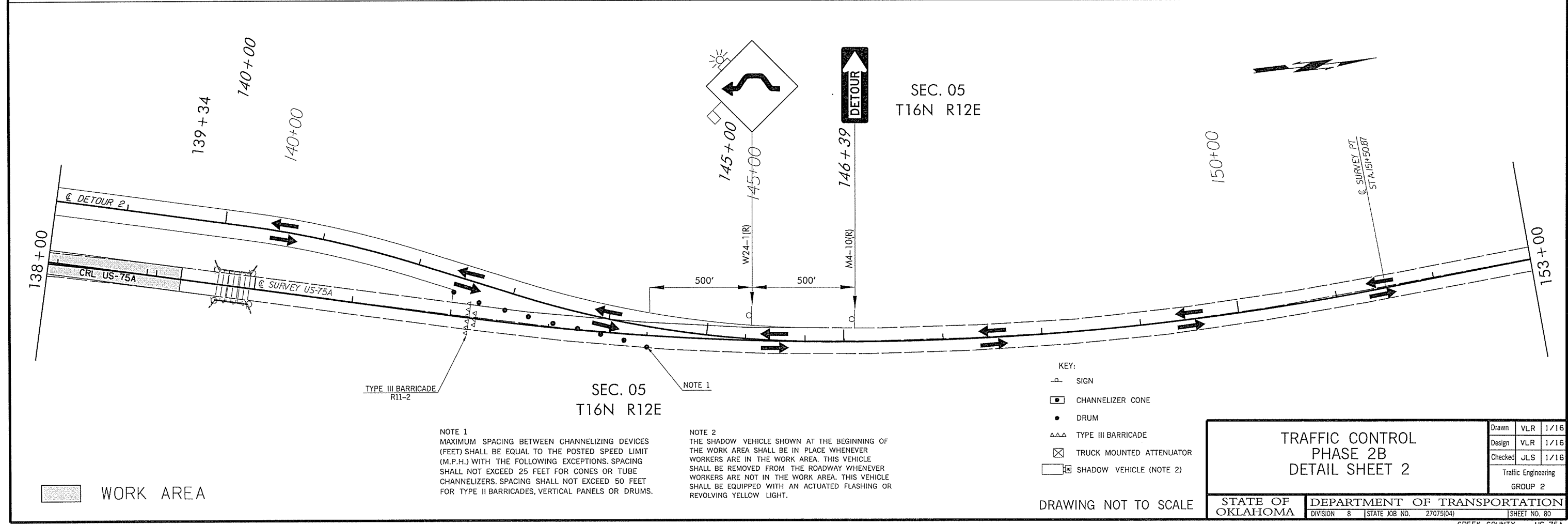
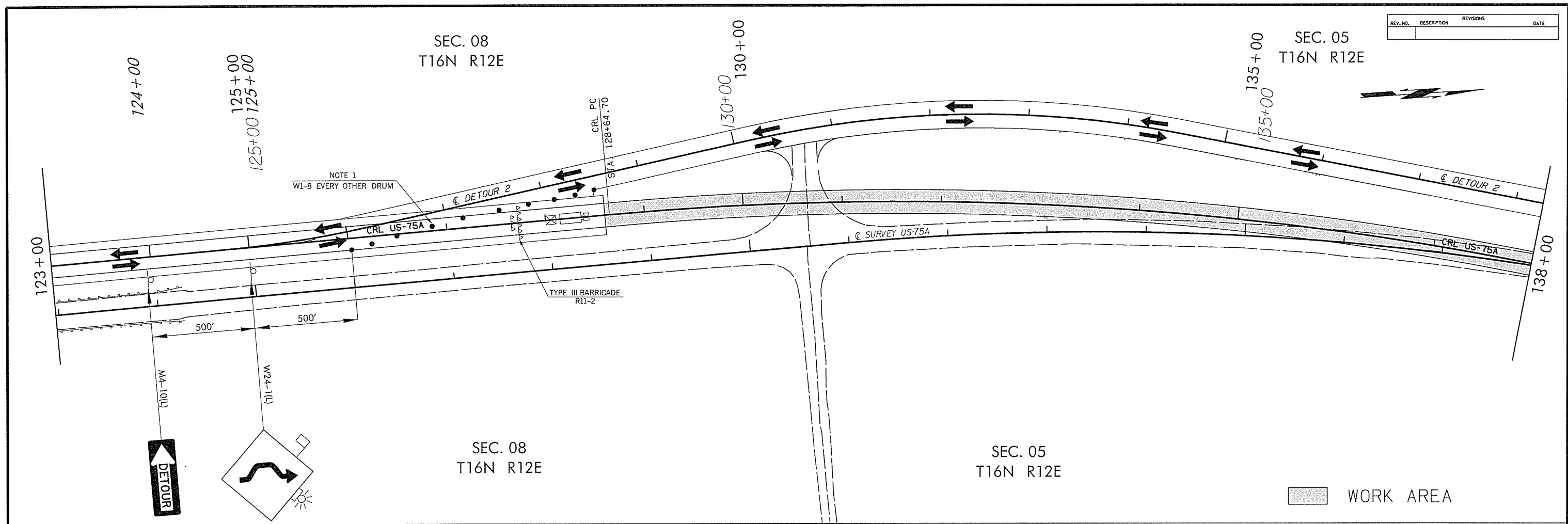


REV. NO.	DESCRIPTION	REVISIONS	DATE



NOTE 1
 MAXIMUM SPACING BETWEEN CHANNELIZING DEVICES (FEET) SHALL BE EQUAL TO THE POSTED SPEED LIMIT (M.P.H.) WITH THE FOLLOWING EXCEPTIONS. SPACING SHALL NOT EXCEED 25 FEET FOR CONES OR TUBE CHANNELIZERS. SPACING SHALL NOT EXCEED 50 FEET FOR TYPE II BARRICADES, VERTICAL PANELS OR DRUMS.

NOTE 2
 THE SHADOW VEHICLE SHOWN AT THE BEGINNING OF THE WORK AREA SHALL BE IN PLACE WHENEVER WORKERS ARE IN THE WORK AREA. THIS VEHICLE SHALL BE REMOVED FROM THE ROADWAY WHENEVER WORKERS ARE NOT IN THE WORK AREA. THIS VEHICLE SHALL BE EQUIPPED WITH AN ACTUATED FLASHING OR REVOLVING YELLOW LIGHT.

- KEY:
- SIGN
 - CHANNELIZER CONE
 - DRUM
 - ▲▲▲ TYPE III BARRICADE
 - ⊠ TRUCK MOUNTED ATTENUATOR
 - ◻ SHADOW VEHICLE (NOTE 2)

TRAFFIC CONTROL PHASE 2B DETAIL SHEET 2		Drawn	VLR	1/16
		Design	VLR	1/16
Checked	JLS	1/16	Traffic Engineering	
		GROUP 2		
STATE OF OKLAHOMA		DEPARTMENT OF TRANSPORTATION		
DIVISION 8		STATE JOB NO. 27075(04)		SHEET NO. 80
CREEK COUNTY US-75A				

DRAWING NOT TO SCALE