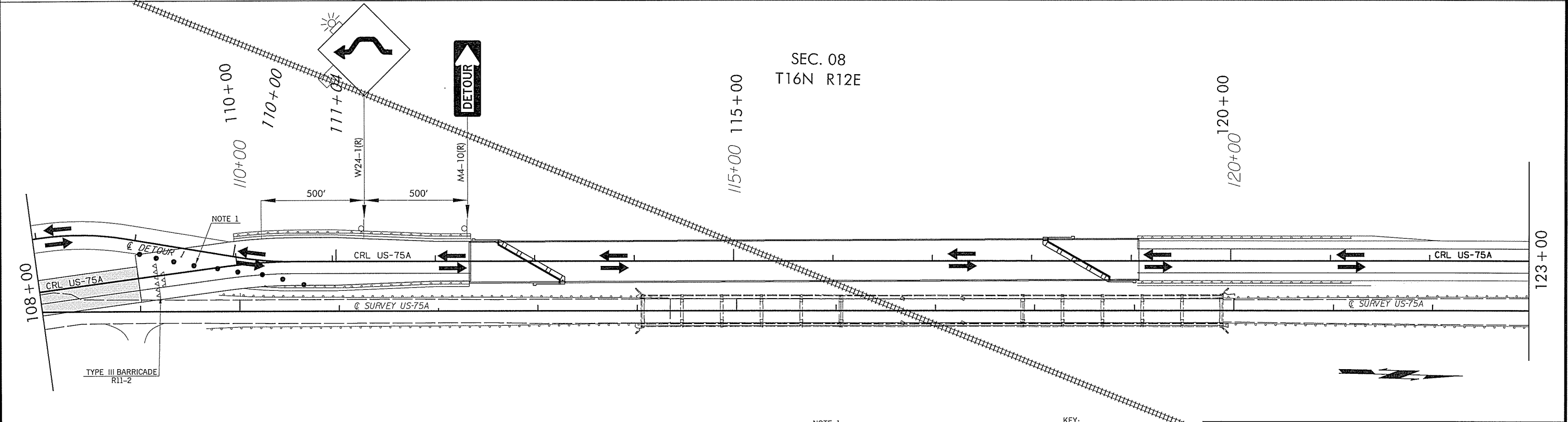
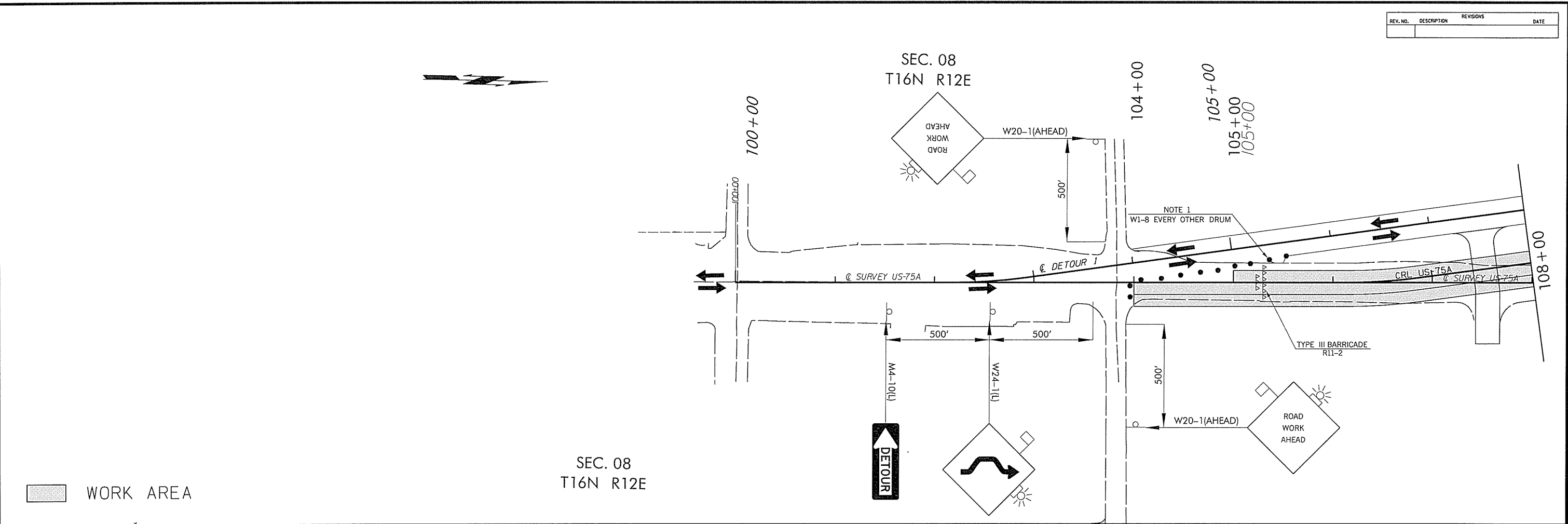


REV. NO.	DESCRIPTION	REVISIONS	DATE



NOTE 1
MAXIMUM SPACING BETWEEN CHANNELIZING DEVICES (FEET) SHALL BE EQUAL TO THE POSTED SPEED LIMIT (M.P.H.) WITH THE FOLLOWING EXCEPTIONS. SPACING SHALL NOT EXCEED 25 FEET FOR CONES OR TUBE CHANNELIZERS. SPACING SHALL NOT EXCEED 50 FEET FOR TYPE II BARRICADES, VERTICAL PANELS OR DRUMS.

- KEY:
- SIGN
 - ◻ CHANNELIZER CONE
 - DRUM
 - △△△ TYPE III BARRICADE

DRAWING NOT TO SCALE

TRAFFIC CONTROL PHASE 2B DETAIL SHEET 1		
Drawn VLR 1/16 Design VLR 1/16 Checked JLS 1/16	Traffic Engineering GROUP 2	
STATE OF OKLAHOMA DIVISION 8	DEPARTMENT OF TRANSPORTATION STATE JOB NO. 27075(04)	SHEET NO. 79 CREEK COUNTY US-75A