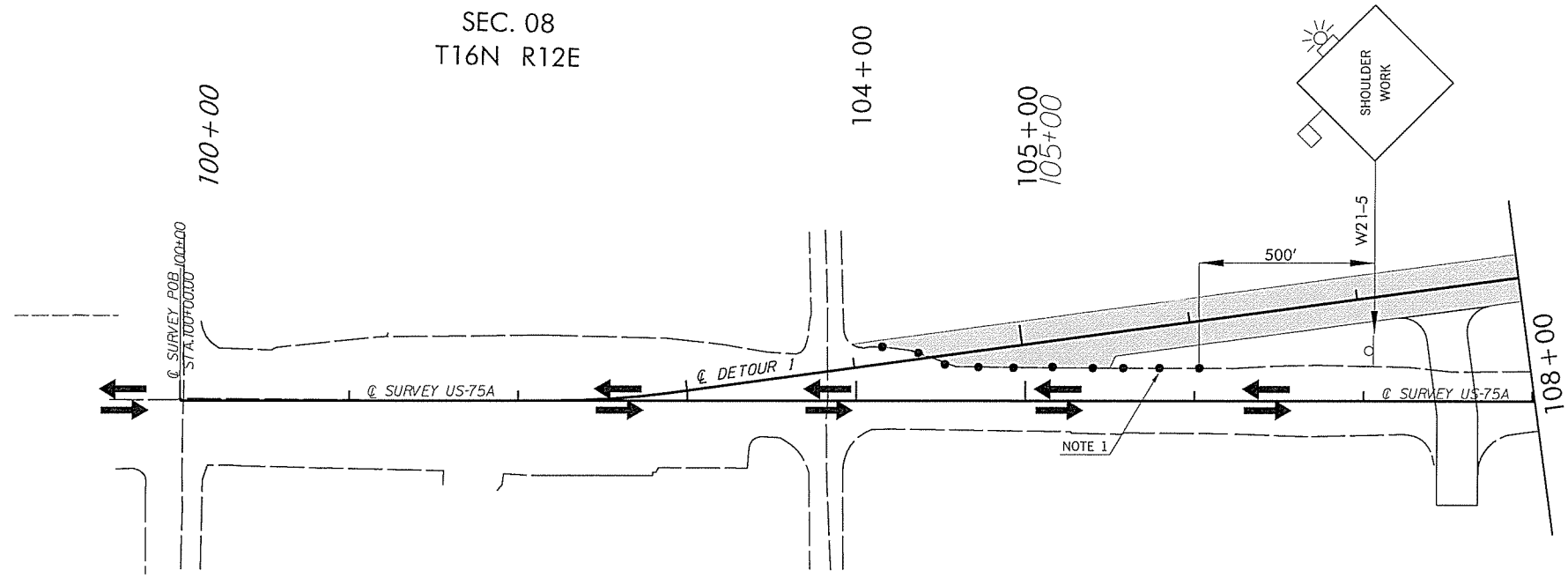


REV. NO.	DESCRIPTION	REVISIONS	DATE

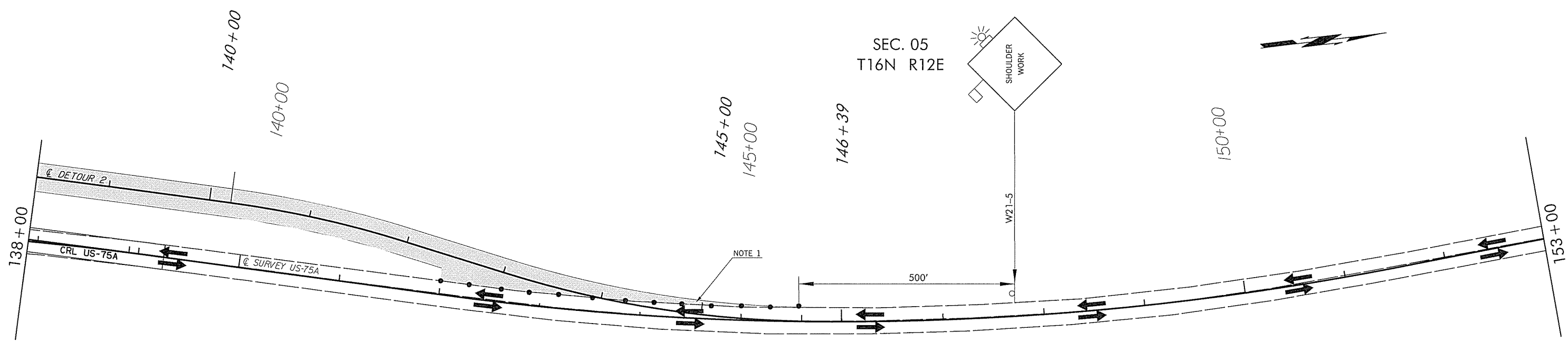
SEC. 08
T16N R12E



SEC. 08
T16N R12E

WORK AREA

SEC. 05
T16N R12E



SEC. 05
T16N R12E

WORK AREA

NOTE 1
MAXIMUM SPACING BETWEEN CHANNELIZING DEVICES (FEET) SHALL BE EQUAL TO THE POSTED SPEED LIMIT (M.P.H.) WITH THE FOLLOWING EXCEPTIONS. SPACING SHALL NOT EXCEED 25 FEET FOR CONES OR TUBE CHANNELIZERS. SPACING SHALL NOT EXCEED 50 FEET FOR TYPE II BARRICADES, VERTICAL PANELS OR DRUMS.

- KEY:
- SIGN
 - ▣ CHANNELIZER CONE
 - DRUM

DRAWING NOT TO SCALE

TRAFFIC CONTROL
PHASE 2A
DETAIL SHEET

Drawn	VLR	1/16
Design	VLR	1/16
Checked	JLS	1/16
Traffic Engineering		
GROUP 2		